

*Welcome,*  
BEYOND<sup>SM</sup>



Celebrity **X** Cruises®



A full-page background image showing a sunset over the ocean. The sky is filled with large, dark clouds that are illuminated from below by the setting sun, creating a dramatic orange and pink glow. The sun itself is partially obscured by a large cloud on the left side. The ocean is visible at the bottom, with a small cruise ship on the horizon line.

# *Celebrity* BEYOND

MORE SPACE. MORE LUXURY. MORE CONNECTED.

Welcome to a place where you can experience all the things you've been missing for so long. Only now, those things are even better than you've imagined. This is a place where the possibilities are as endless as the views. Where you can disconnect entirely while you reconnect with each other—and the world. This place is Celebrity Beyond<sup>SM</sup>.

The third ship in our revolutionary Edge<sup>®</sup> Series takes our innovative outward-facing design further than ever, creating an even closer connection between you, the sea, and every exciting place on the horizon. Unwind in expanded open-air spaces. Savor fine dining that rivals anything you'd find on land. And discover even more ways to relax and renew.









Tuscan Restaurant



Grand Plaza



Eden



The Spa





# *Iconic* EDGE SERIES EXPERIENCES

While Celebrity Beyond<sup>SM</sup> is designed to redefine luxury travel again, it wouldn't be complete without the visionary spaces that make our Edge<sup>®</sup> Series ships destinations in themselves. In fact, *Time* magazine named Celebrity Edge<sup>®</sup> one of the "World's Greatest Places" of 2019.

Soar above the open sea on the cantilevered Magic Carpet. Surrender to the unexpected pleasures of the Rooftop Garden. Discover the multi-sensory wonders of our ever-evolving Eden. Get a taste of the good life at the Grand Plaza. Discover new ways to look and feel your best at The Spa. All this and more make Celebrity Beyond the world's newest greatest place.







# THE CELEBRITY BEYOND DREAM TEAM

To ensure Celebrity Beyond<sup>SM</sup> would live up to its name, we've not only reunited the architects and designers from our Edge<sup>®</sup> Series, but we've expanded their roles—and their designs will expand the way travel inspires you. Plus, the ship offers them more room to create even more incredible spaces.



**KELLY HOPPEN, CBE**  
INTERIOR DESIGNER

With over 40 years in the design industry and multiple awards to her name, Kelly is one of the most sought-after interior designers in the world. Kelly brought her globally renowned style to The Retreat<sup>®</sup> and all suites on our first Edge Series ships—and now she's reimagined these exclusive spaces along with outdoor venues such as Rooftop Garden and the main pool area.



**NATE BERKUS**  
EDGE SERIES DESIGN AMBASSADOR

As part of an exclusive partnership, design icon Nate Berkus was first brought on board as Design Ambassador for our Edge Series ships. With his global aesthetic and forward-thinking style, Nate was the perfect fit to showcase Celebrity's cutting-edge innovation and breathtaking design, and now he's bringing his distinctive design aesthetic to the new terraced Sunset Bar on Celebrity Beyond.



**TOM WRIGHT OF WKK**  
ARCHITECT

World-renowned for his striking creations like the Burj Al Arab Hotel in Dubai, Tom Wright was the clear choice to lead the charge on designing open decks and the Edge Series ships distinctive Magic Carpet<sup>®</sup>. Tom elevates Celebrity Beyond's outdoor spaces, including Sunset Bar, Rooftop Garden, and the main pool area.



**SCOTT BUTLER, AIA**  
ARCHITECT

Scott and Wilson Butler Architects have been a design partner with Celebrity Cruises<sup>®</sup> since our Celebrity Millennium<sup>®</sup> Series ships. Scott and his firm were also Master Planners in the Solstice<sup>®</sup> Series ships, designing iconic spaces, including the Grand Foyer, the Panoramic Lifts, the Shopping Arcade, and more. Scott brought his talent to our Edge Series ships in The Theatre and Eden.



**PATRICIA URQUIOLA**  
ARCHITECT/DESIGNER

Patricia studied architecture at the world-renowned Madrid Polytechnic and Milan Polytechnic. Her talents have earned her a long list of international honors and awards, and many of her designs are displayed in some of the most prestigious museums in the world. She created the stunning interior of Eden.



**JOUIN MANKU**  
DESIGN TEAM

Travel and transformation are central to Jouin Manku's design. They draw inspiration from a multitude of cultures and merge cutting-edge technology with old-world craftsmanship. On Celebrity Beyond, they've redesigned their original stunning Grand Plaza as well as creating the intimate setting of Le Voyage by Daniel Boulud.



# *Sunset* BAR

The open sea is one of the most rejuvenating places you can be, and we took full advantage of this in creating a redesigned, terraced Sunset Bar that's nearly twice the size as before. The aft location offers amazing wake views, creating the perfect backdrop for the vision of designer to the stars Nate Berkus. That's right—our Edge® Series Design Ambassador, who needs no introduction, has stepped into the role of designer himself to imagine one of the most anticipated venues on Celebrity Beyond<sup>SM</sup>.

Working in collaboration with architect Tom Wright of WKK, who's behind many of the engineering feats that made our Edge Series possible, Nate has created a chic, Moroccan-inspired escape that might just remind you of a modern-day Casablanca. And that's perfect, because the moment you step through the pergola-covered entrance, you'll know this is the beginning of a beautiful friendship with one of the hottest spots at sea.





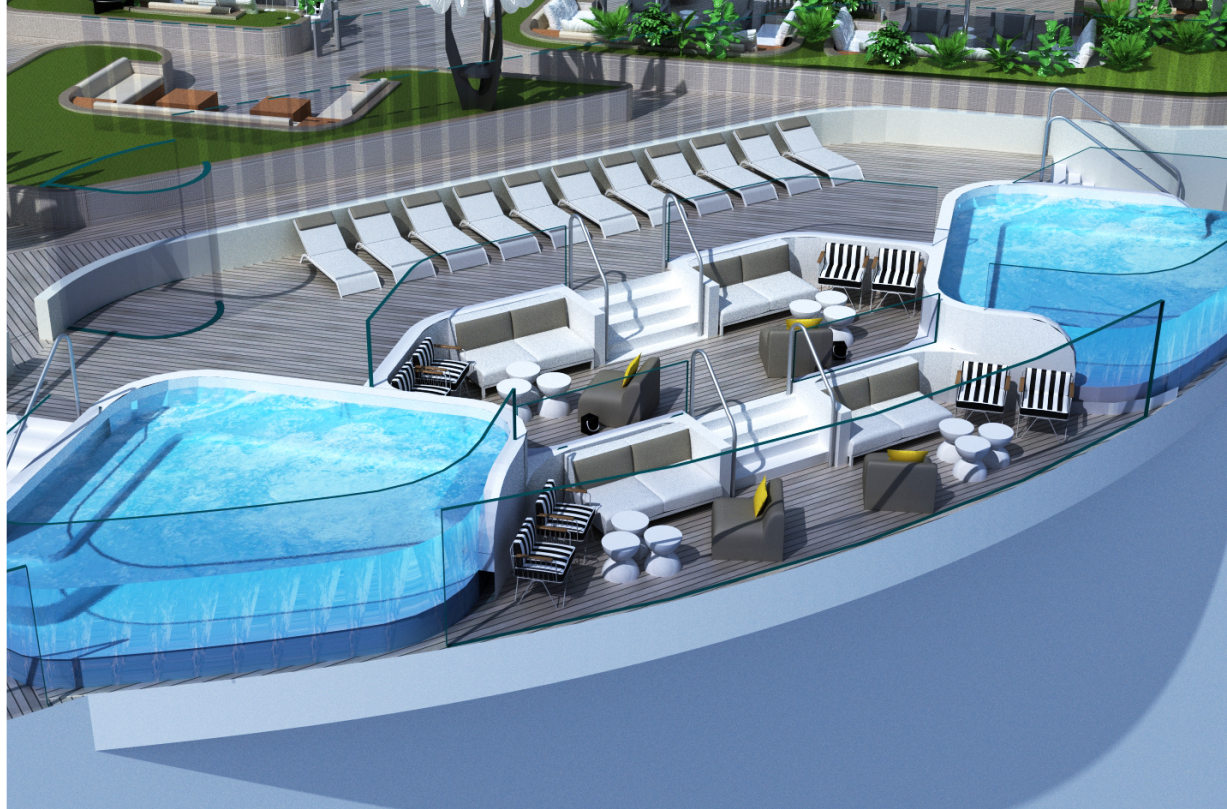






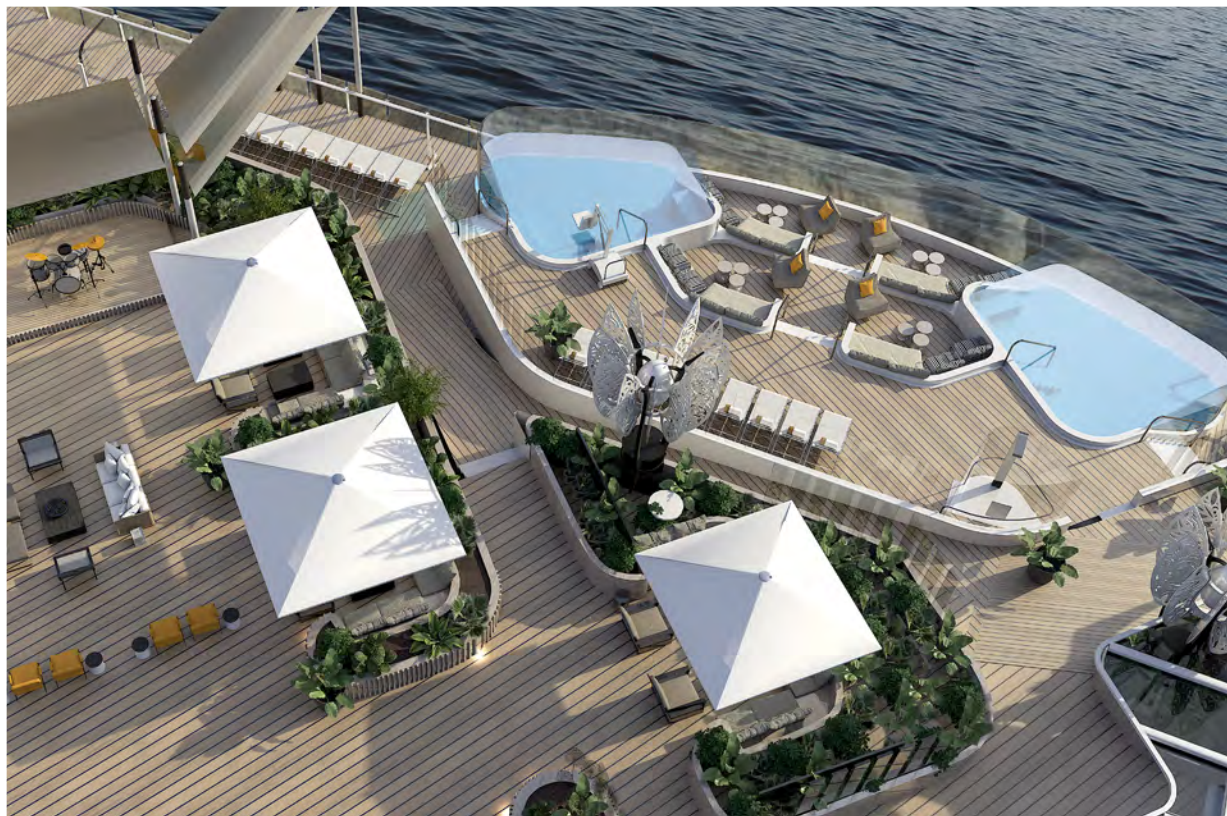
Celebrity X Cruises®





# *Rooftop* GARDEN

What better place could there be to gaze at the sea than float pools that are cantilevered over the open ocean? This feature is one of the highlights of our redesigned Rooftop Garden, which now extends right over the water's edge. The living urban playscape that debuted on our Edge® Series has turned over a whole new leaf on Celebrity Beyond<sup>SM</sup>, thanks to the vision of world-renowned designer Kelly Hoppen, CBE, and architect Tom Wright, of WKK.



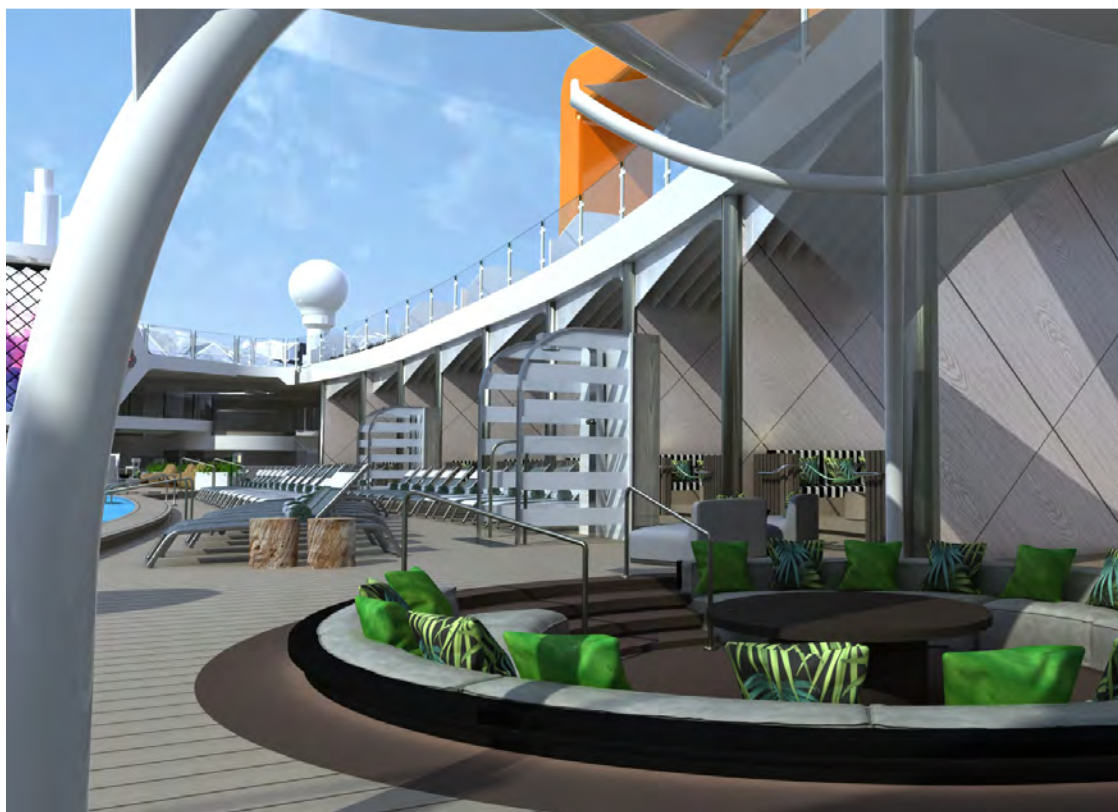
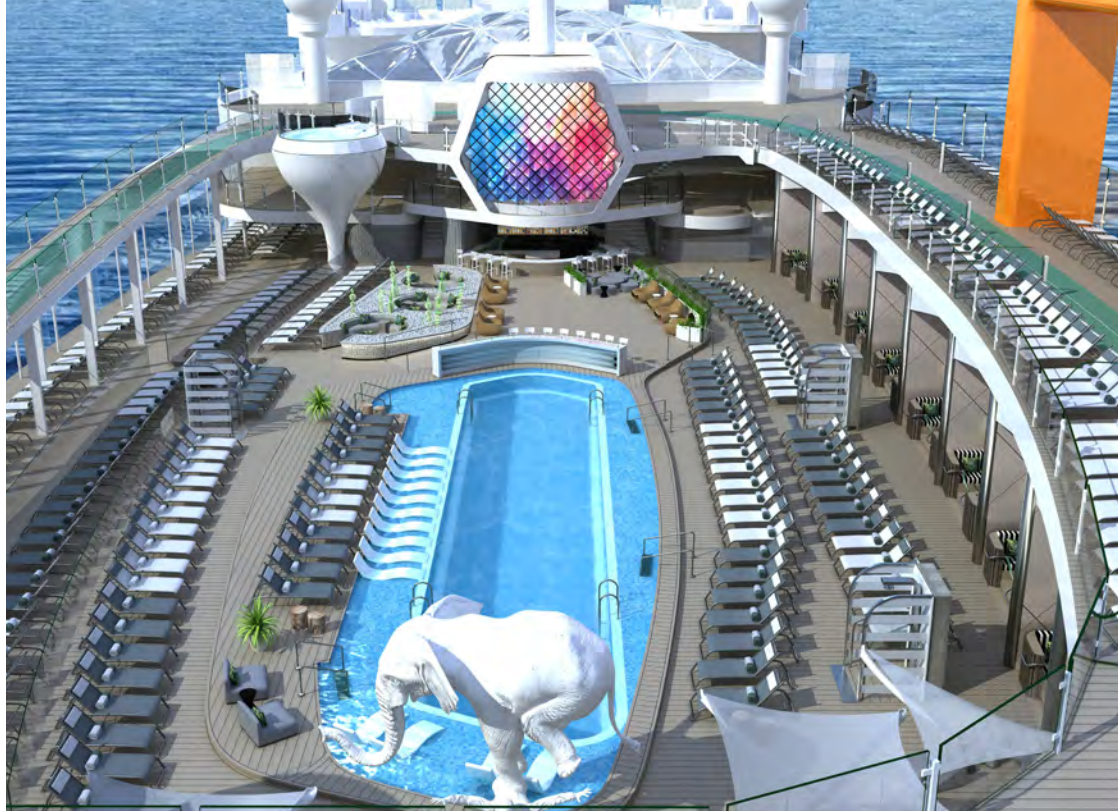
The Rooftop Garden is filled with plenty of other unexpected pleasures, day and night. Settle into new shaded seating areas designed by Kelly Hoppen that are equal parts cozy and chic. Dance the night away as one of our talented bands plays all your favorites live on stage. Challenge someone to a friendly game of giant chess. Or just lie back on one of the pillow-soft loungers and gaze up at the sea of stars above as you glide over the sea below. The sky truly is the limit at Rooftop Garden.



# Resort DECK

Celebrity Beyond's stunningly redesigned main pool area will make you feel like you've arrived at one of the world's best resorts. But what other resort offers views like these? The larger outward-facing pool deck means you never have to take your eyes off the ocean while you replenish your vitamin D levels and restore your sanity in this asymmetrical, terraced oasis. Kelly Hoppen's brand-new design, combined with the creativity of architect Tom Wright, make the main pool the ultimate sun-soaked destination.

Float the day away in the 25-yard lap pool, complete with in-pool loungers. Relax above it all in a signature Edge® Series wonder—our two-story, martini glass-shaped hot tubs. Get social with friends under the sun at the new sunken circular seating areas. Hide away in one of our eight newly redesigned Cabanas, now elevated slightly above the pool deck and repositioned to give you an even better perspective.







# *Magic* CARPET

No rush can compete with the endless views 13 stories above the sea on our cantilevered Magic Carpet®. First, you might wonder how we made the impossible possible, but then, you'll simply surrender to the feeling of floating across the endless horizon as you drink, dine, or simply relax. But the Magic Carpet isn't just one magical venue—it's several—and each transformation it undergoes brings an entirely new way to experience this amazing place.



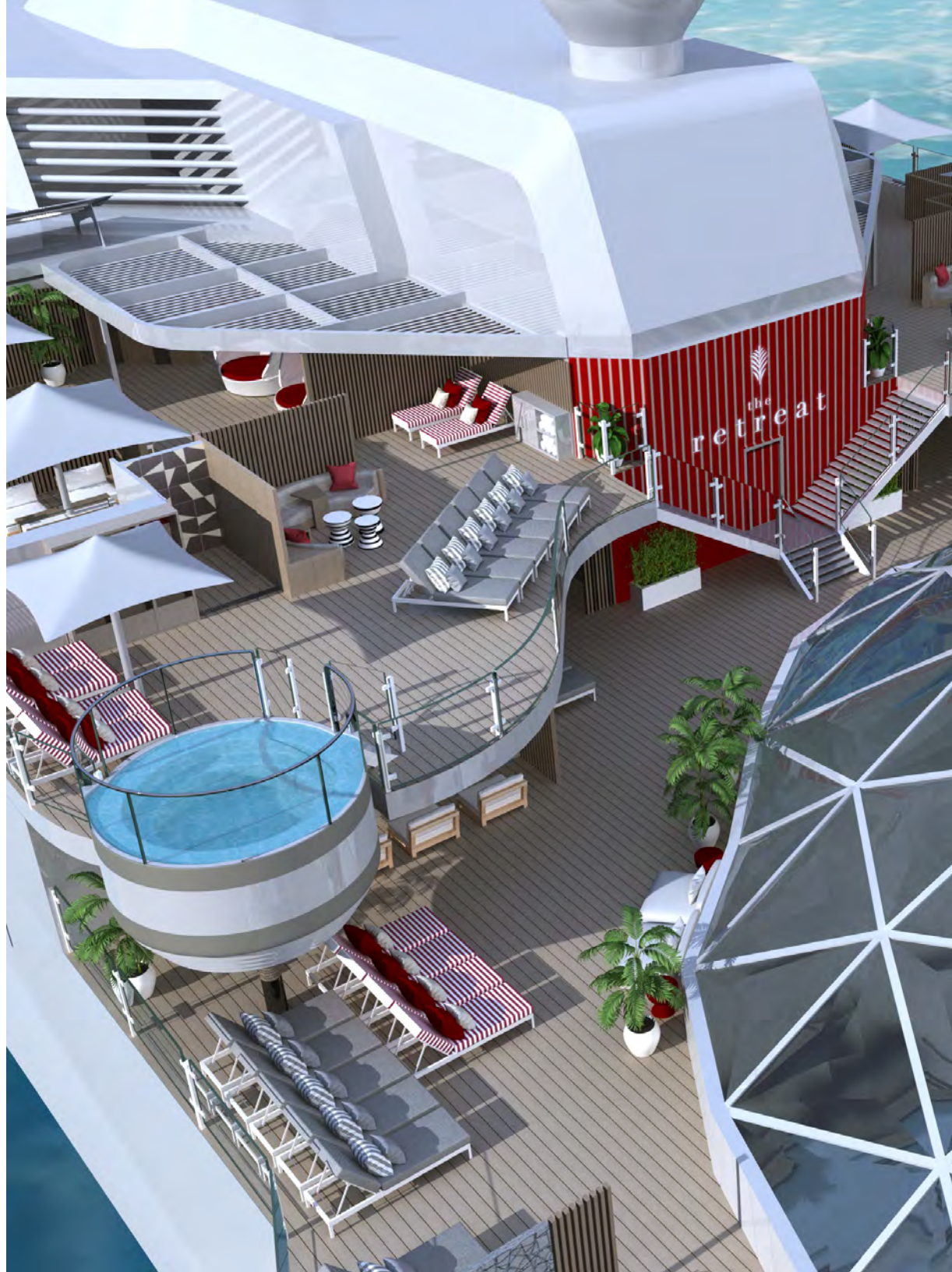
# The RETREAT

A place so exclusive it has no address, The Retreat® is the ultimate luxury vacation experience. Every guest not only enjoys stunning suite accommodations but also private dining, an exclusive lounge and sundeck, and a long lineup of services and amenities.

Kelly Hoppen enhances this already unrivaled resort-within-a-resort with stunningly reimagined spaces that are now brought together in one area.



To give you more space to relax in the ocean air, The Retreat Sundeck now offers you two levels of outdoor bliss. Kick back poolside with a cocktail delivered by a dedicated attendant. We've even added a second hot tub, so you have more room for a soothing soak. Escape to a secluded cabana or one of Kelly Hoppen's chic new seating areas with a calming Zen garden vibe. Make new friends over drinks at The Retreat Bar.







luminae

at the retreat®

Your private restaurant, Luminae at The Retreat, features a new design by Kelly Hoppen that's as boldly elegant as the cuisine. And it's been repositioned to the front of the ship with panoramic floor-to-ceiling views as incredible as our Iconic Suites. Explore exclusive menus crafted by our Michelin-starred chef that you won't find anywhere else on board, including signature dishes designed by Daniel Boulud, our Global Culinary Ambassador.



the  
retreat®

lounge

Not to be outdone, The Retreat Lounge also boasts an inviting new Kelly Hoppen design and a new location with dramatic floor-to-ceiling views. Take in the ever-changing scenery whenever you stop by this 24/7 lounge for complimentary beverages, gourmet bites, or simply to unwind. You'll also have access to an exclusive concierge who'll make any arrangements you need—on board or off.









Iconic Suite



Penthouse Suite

# The RETREAT SUITES

As a guest of The Retreat®, you'll have your choice of stunning suite accommodations, including our two-story Edge Villas with outdoor plunge pools, and our Iconic Suites, the largest in our fleet, featuring views as amazing as the captain's. All our suites on Celebrity Beyond<sup>SM</sup> feature fresh color palettes and design details by Kelly Hoppen. As always, you'll enjoy a Personal Retreat Host, so you never have to lift a finger, along with luxurious amenities like eXhale<sup>®</sup> bedding, king-sized Cashmere<sup>™</sup> mattresses designed exclusively for Celebrity, and plush Frette robes and slippers—just to name a few. And now, every guest in your suite receives premium drinks, streaming Wi-Fi, tips, a shore excursion credit, and an onboard credit to use however you choose.\* We've thought of every detail, so you don't have to think about a thing.

\*All guests who book The Retreat® on or after November 17, 2020 will receive a Premium Beverage Package, Unlimited Stream Internet Package, prepaid tips, and an onboard credit ("OBC") for all guests in the stateroom. OBC amount varies by length of sailing: \$200 per person for sailings 1 – 5 nights, \$300 per person for sailings 6 – 9 nights, and \$400 per person for sailings 10 nights or longer. OBC has no cash value, is applicable to cruise only, is non-transferable, is not redeemable for cash, and will expire if not used by 10:00 p.m. on the final night of the cruise. Prepaid tips provide tips for Personal Retreat Host, headwaiter, waiter, and assistant waiter in the amount suggested by Celebrity's guidelines.





Thoughtful spaces for well-being

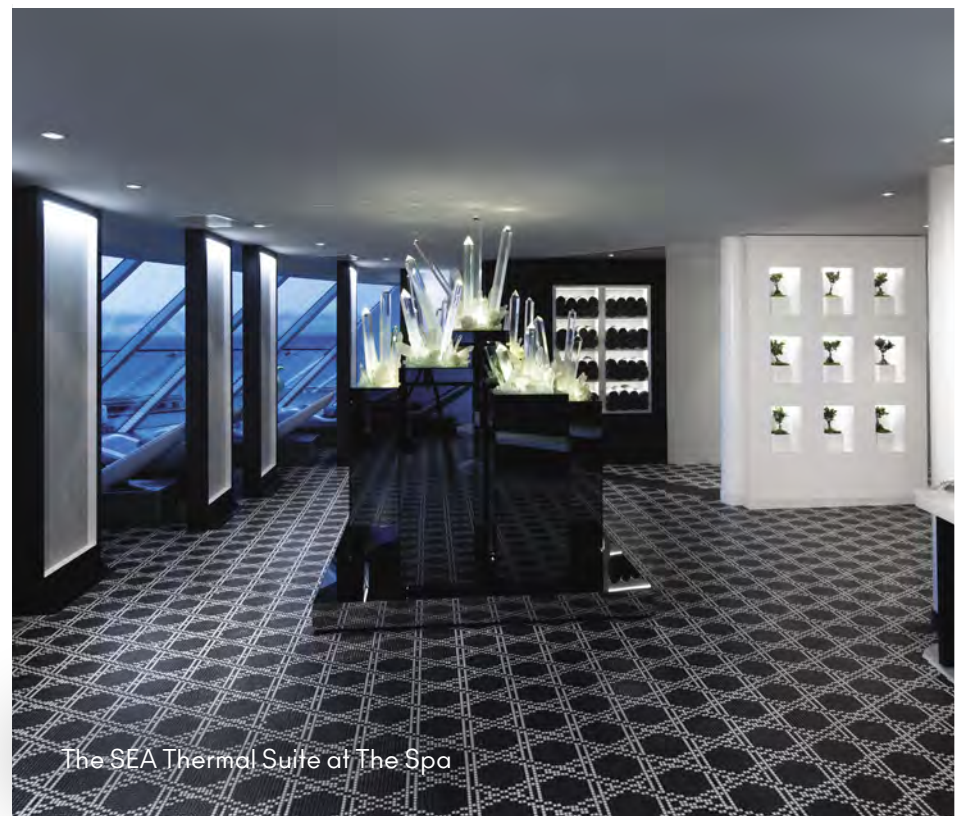
## AQUAClass® SKY SUITES

Wellness is so fundamental to our philosophy, we've created a whole new way to nourish your mind, body, and spirit on vacation. Introducing our AquaClass® Sky Suites. Enjoy floor-to-ceiling ocean views, a private veranda with lounge seating, a king-sized Cashmere™ Mattress with exclusive eXhale® bedding, a custom pillow menu, and plush Frette bathrobes and slippers. Stay refreshed with in-room bottled water service and eco-friendly bath products. Keep up your routine with yoga mats provided for your use on board. Feel like eating in? Get delicious clean cuisine options delivered right to your suite. Plus, your Personal Retreat Host will make sure you never have to lift a finger. We've thought of every detail, so you can focus on finding your center.

AquaClass Sky Suites are located near The Spa, where you'll enjoy an array of exclusive benefits, including complimentary access to our SEA Thermal Suite, a dedicated Spa Concierge, priority spa reservations, complimentary fitness classes, and a spa credit\* to use toward your treatments. And then to extend your holistic experience even further, you'll have priority access to booking curated wellness experiences in every destination you'll visit. And, beyond all this, you'll also enjoy the exclusive spaces and indulgent services and amenities of The Retreat®. It's everything you need for the blissful escape you deserve.



AquaClass Sky Suite designed by Kelly Hoppen



The SEA Thermal Suite at The Spa





AquaClass stateroom with Infinite Veranda®  
designed by Kelly Happen

## AQUAClass® STATEROOMS

Our newly enhanced AquaClass® stateroom experience is more ahh-inspiring than ever. It starts with your Infinite Veranda® stateroom that erases the boundaries between indoor and outdoor living. Spa-inspired elements are thoughtfully infused throughout, including pillow menus, our exclusive eXhale® bedding, plush cotton robes and slippers, a massaging showerhead, eco-friendly bath products, on-demand wellness programming on your stateroom TV, yoga mats, daily bottled water service, and an enhanced air filtration system—which you'll now find in all our staterooms.



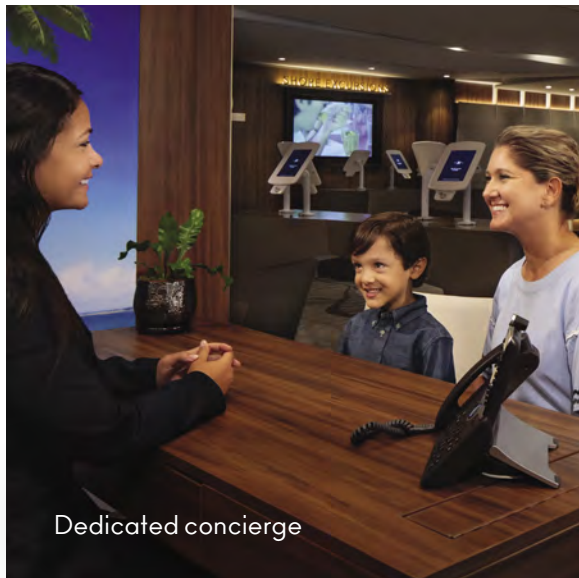
Blu restaurant

As an AquaClass guest, you'll enjoy a rejuvenating lineup of benefits, including an exclusive welcome reception at The Spa, complimentary access to the SEA Thermal Suite, a dedicated spa concierge, priority spa booking, complimentary fitness classes, and exclusive discounts on spa treatments. You'll also savor clean cuisine in our Blu restaurant, including new menu options focused on a healthier lifestyle. Plus, enjoy priority access to booking curated wellness experiences in each destination you'll visit. You'll never want your AquaClass vacation to end, but you'll be a better version of yourself when it does.



# *Concierge* CLASS STATEROOMS

Our Concierge Class staterooms pair the luxury of your Infinite Veranda® stateroom with an array of services and amenities, from priority check-in—so you can start relaxing even sooner—to a dedicated concierge who's always just steps away from your stateroom to help with anything you need.



Dedicated concierge



Infinite Veranda stateroom





## *Infinite* VERANDA STATEROOMS

Celebrity Beyond offers an array of accommodations for every traveler, including the groundbreaking Infinite Veranda® staterooms introduced on Celebrity Edge®, now featuring new color schemes and décor by Kelly Hoppen. These transformational staterooms erase the boundaries between indoor and outdoor living, opening up your entire room to the reinvigorating ocean air with the touch of a button.



Infinite Veranda stateroom



# *Culinary* EXCELLENCE

What you eat on vacation is almost as important as where you go, and on every Celebrity vacation, we bring both together perfectly. The captivating scents and flavors of your dining experience will transport you to new places—without even leaving your table. Our Michelin-starred chef creates the globally inspired dishes on every menu, and they're prepared fresh daily using local ingredients. And, with a wide variety of distinctive restaurants, where the vibe is as appealing as the cuisines they serve, your favorite restaurant during your vacation will most likely be right on board.

When we designed Celebrity Edge, we took fine dining to the next level by introducing all new restaurants as well as rethinking the main dining experience, where you have four complimentary main restaurants, each with its own regionally influenced cuisines and ambiances. Celebrity Beyond offers the same main dining restaurants as well as updated Celebrity Select Dining options, so you can dine exactly when you want to.





32

Distinct food and  
beverage experiences

4

Complimentary  
main restaurants

2

Exclusive restaurants:  
1 for The Retreat®  
1 for AquaClass®

8

Specialty  
restaurants

4

Complimentary casual  
dining venues

14

Bars and lounges





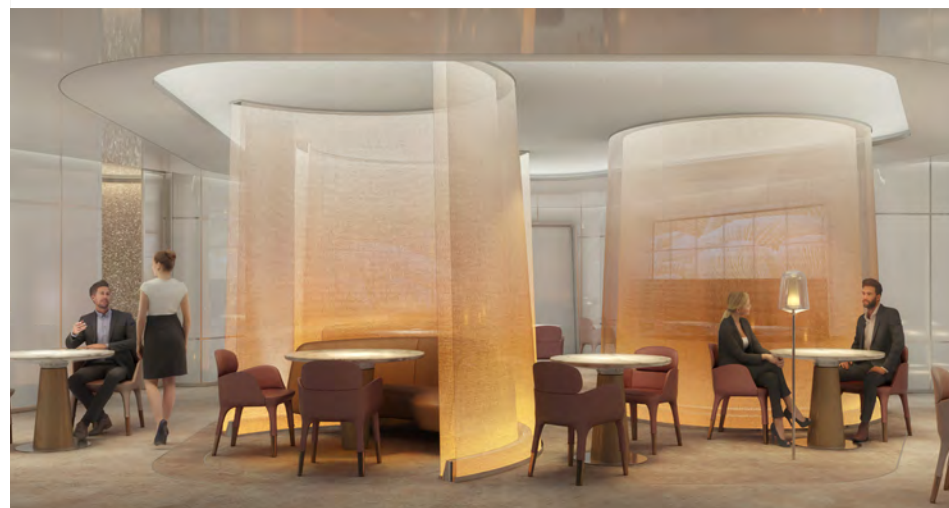


# *Le Voyage*

BY DANIEL BOULUD

World renowned chef Daniel Boulud, our Global Culinary Ambassador, has created his first signature restaurant at sea—Le Voyage by Daniel Boulud. Just as the name implies, travel is the inspiration for Chef Daniel's mouthwatering dishes. The globally inspired flavors he has infused into his menu will transport you to the very places that inspired them. Along with the most awarded wine collection at sea, which our sommeliers will pair perfectly with your dishes, and a farewell treat you'll receive at the end of your experience, this is truly a fine dining experience like no other.

The ambiance of the restaurant is the result of Jouin Manku's creative talents. For Le Voyage by Daniel Boulud, the aesthetic is intimate and upscale, featuring soft tones, private banquette seating with textured and graphically lit glass flutes that create an inviting warm glow, and a dedicated entrance and exit that create a one-of-a-kind culinary experience.















## *Main* RESTAURANTS

Celebrity Beyond<sup>SM</sup> offers not one but four complimentary main restaurants—Normandie, Tuscan, Cosmopolitan, and Cyprus. Every restaurant features the same mouthwatering menu that changes nightly, plus each one offers its own ambience, along with a selection of exclusive, regionally inspired dishes and drinks.

### CELEBRITY SELECT DINING

We may have reinvented the main restaurant experience with four restaurants, but we haven't changed the way you plan your dining in our main restaurants. Now, you can choose Celebrity Select Dining Early, Celebrity Select Dining Late, or Celebrity Select Dining Anytime, so you can dine when you want to.



# Grand PLAZA

The Grand Plaza is a transformational place that offers a different experience every time you visit. And, on Celebrity Beyond<sup>SM</sup>, we re-enlisted the creative genius of Jouin Manku who created the original three-story space, inspired by the piazzas of Italy and the invigorating energy of everyone coming together to savor a taste of the good life, to reimagine this wildly popular venue and make it even more unforgettable.

On Celebrity Beyond, we made the Grand Plaza even bigger giving it a loftier, airier atmosphere. The added space provides even more intimate seating and allowed us to move the Martini Bar into the center of the venue as a full, circular bar. The iconic chandelier hangs proudly above the new Martini Bar and boasts a new, organic shape and hundreds of individual LED lights that cast an inviting glow at all hours. With everything it has to offer, the Grand Plaza boldly declares that it's the place to see and be seen.









# Choose FROM TWO INCREDIBLE CORNERS OF THE WORLD

See the Old World from a new perspective—or find your own corner of the Caribbean on board our luxurious Celebrity Beyond<sup>SM</sup>. Whether you want to soak up the Caribbean sun or discover Europe's stunning coast—we'll help you do it in style.

## THE MEDITERRANEAN

Set sail in the Mediterranean beginning April 2022.

**SEE SAILINGS**

## THE CARIBBEAN

Island-hop in the Caribbean beginning October 2022.

**SEE SAILINGS**



Get up close to the locals  
in the Caribbean



Take in epic sunsets  
from sea





Meander through seaside villages in Europe



Create new memories in the Old World

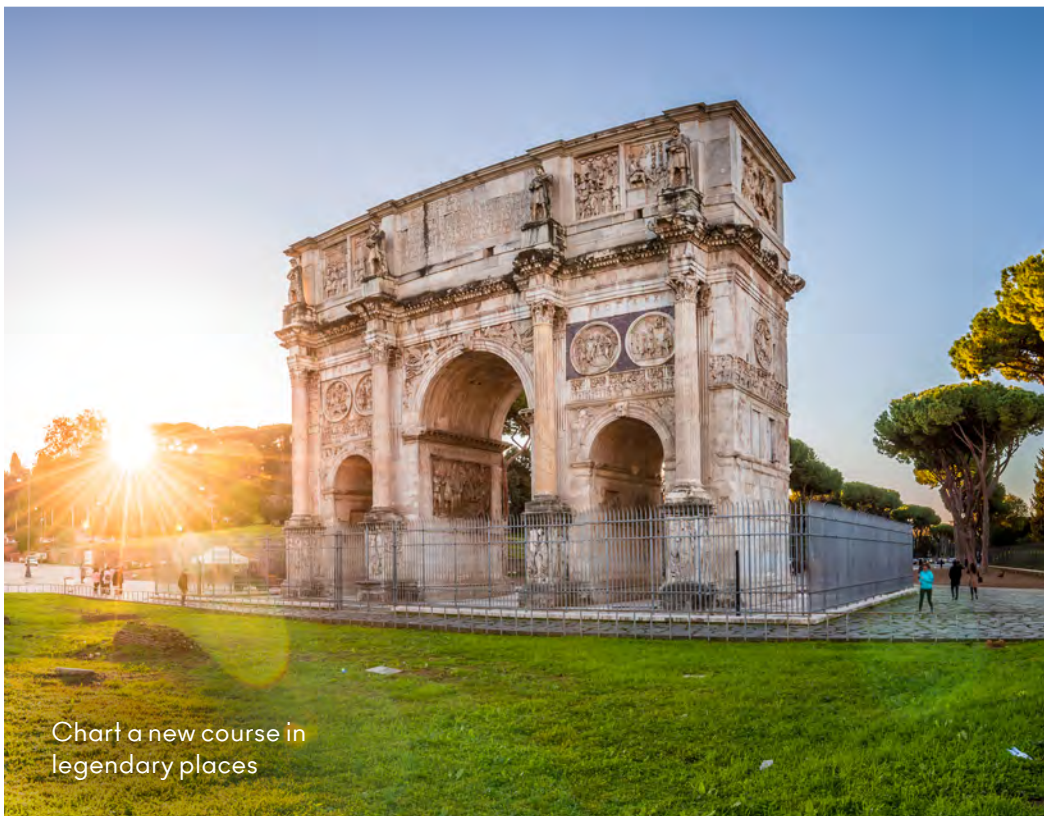


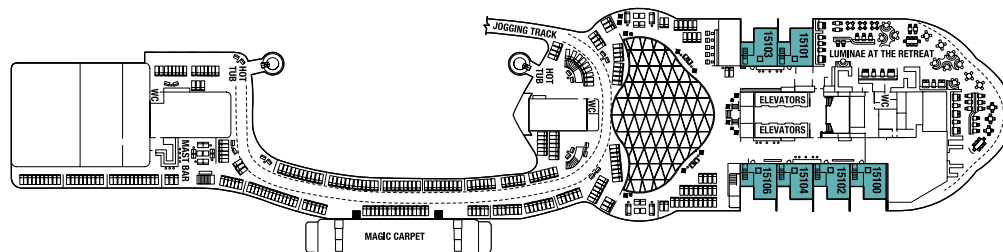
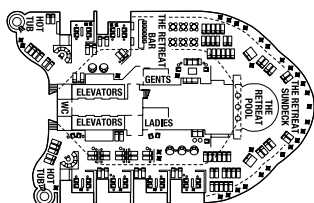
Chart a new course in legendary places



# CELEBRITY BEYOND<sup>SM</sup> DECK PLANS

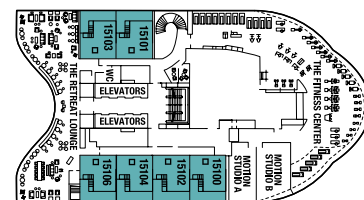
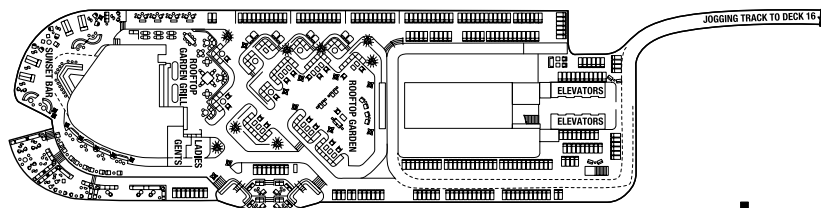
For all of the most up-to-date deck plans, visit us at [celebrity.com/deckplans](http://celebrity.com/deckplans)

Deck 17



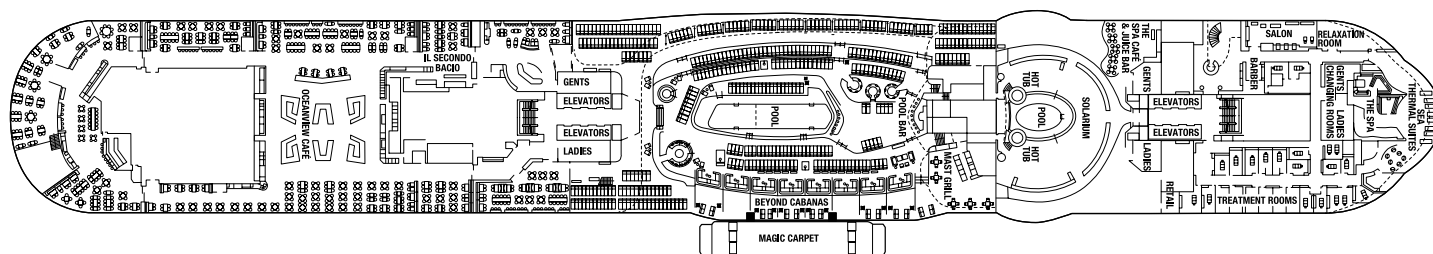
Deck 16

EV



Deck 15

EV



Deck 14

- IC Iconic Suite
- PS Penthouse Suite
- EV Edge Villas
- RS Royal Suite
- CS Celebrity Suite
- AS AquaClass<sup>®</sup> Sky Suite
- S1 Sky Suite 1
- S2 Sky Suite 2
- S3 Sky Suite 3

- A1 AquaClass 1
- A2 AquaClass 2
- C1 Concierge Class 1
- C2 Concierge Class 2
- C3 Concierge Class 3

- E1 Edge Stateroom w/ Infinite Veranda<sup>®</sup> 1
- E2 Edge Stateroom w/ Infinite Veranda 2
- E3 Edge Stateroom w/ Infinite Veranda 3
- E4 Edge Stateroom w/ Infinite Veranda 4
- E5 Edge Stateroom w/ Infinite Veranda 5
- SV Sunset Veranda Stateroom
- P1 Deluxe Porthole View Stateroom w/ Veranda
- P2 Deluxe Porthole View Stateroom w/ Veranda

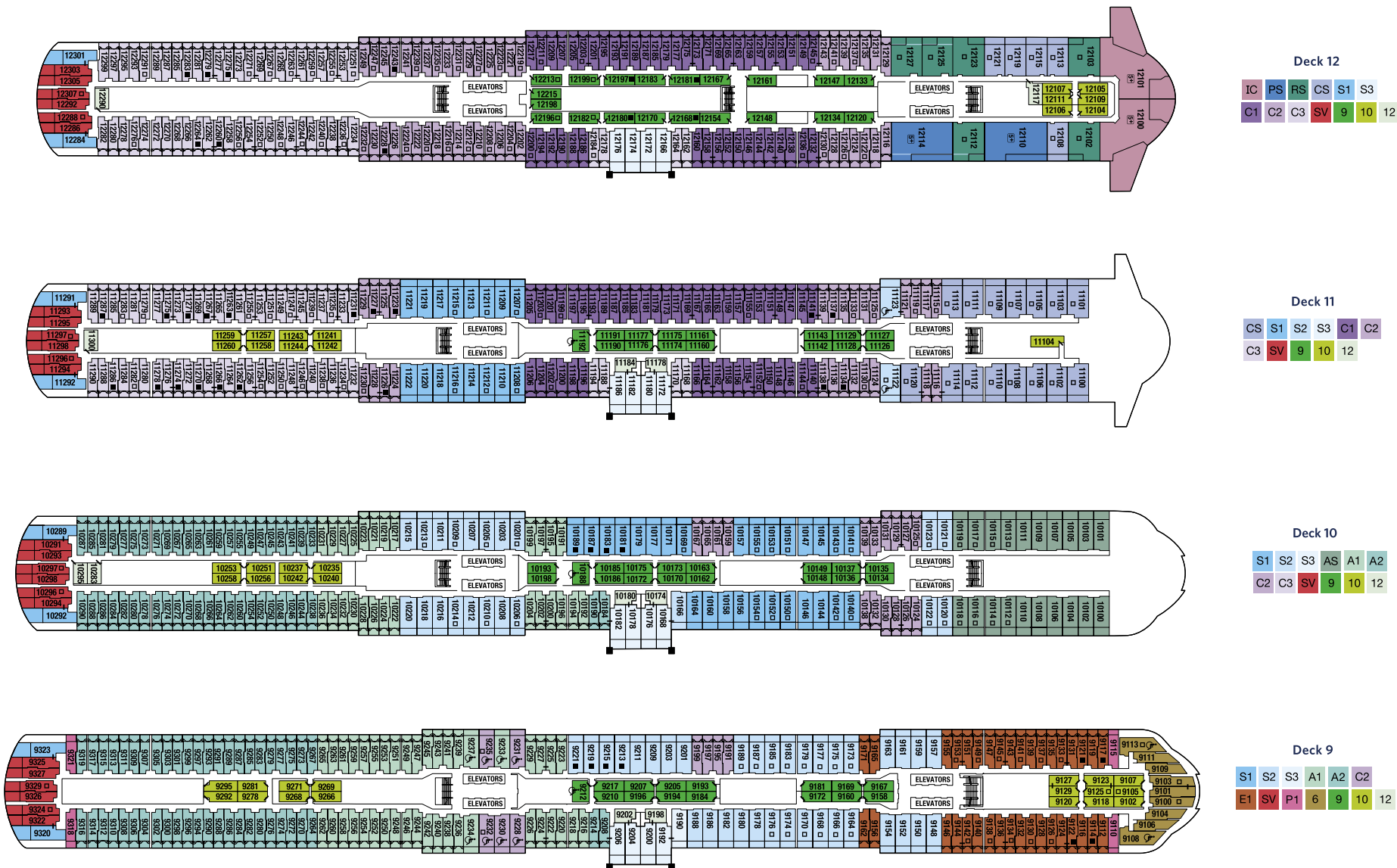
- PO Panoramic Ocean View Stateroom
- 6 Deluxe Ocean View Stateroom 06
- 7 Ocean View Stateroom 07
- 8 Ocean View Stateroom 08
- 9 Deluxe Inside Stateroom 09
- 10 Deluxe Inside Stateroom 10
- 11 Deluxe Inside Stateroom 11
- 12 Inside Stateroom 12

- + Medical Facility - Deck 2  
Located by Forward-Ship Elevators
- Double Sofa Bed
- Single Sofa Bed
- + Stateroom for occupancy 5 and up
- | Connecting Staterooms
- / Inside Stateroom Door Location
- ♿ Wheelchair Accessible Stateroom  
Featuring Roll-in Shower

Forward



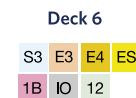
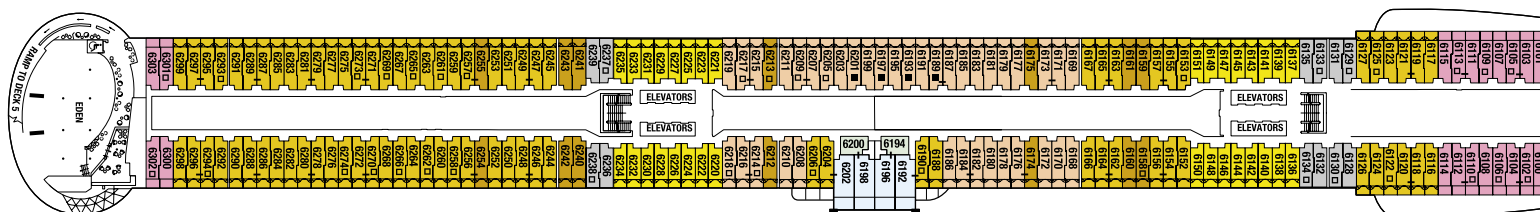
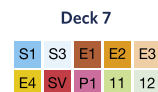
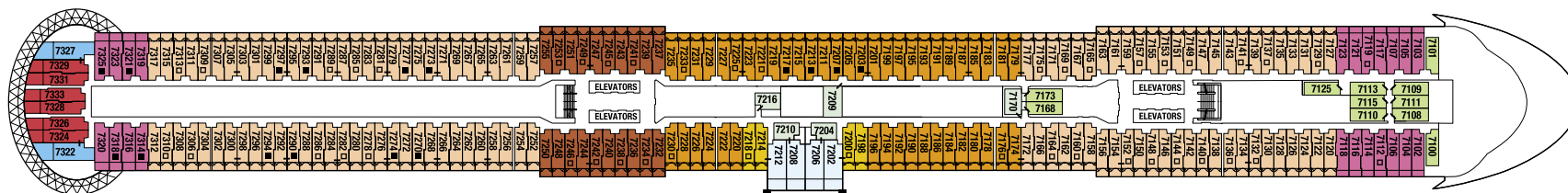
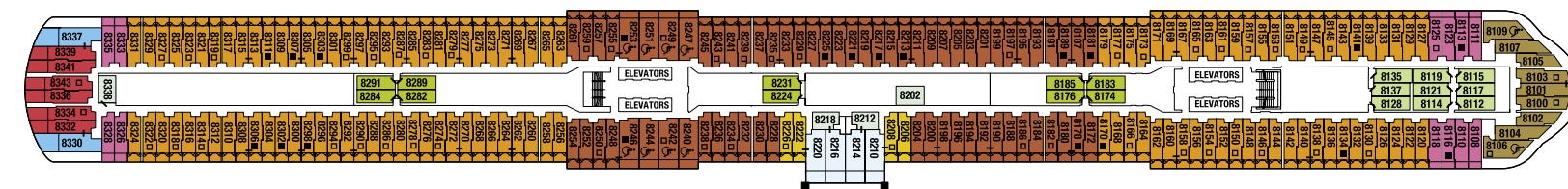




DECK PLANS ARE NOT DRAWN TO SCALE. DECK NUMBERS REFLECT UPPER GUEST LEVELS.

For an interactive deck plan experience, 360° virtual tours of stateroom categories, and the most up-to-date deck plans, visit [celebrity.com/deckplans](http://celebrity.com/deckplans).





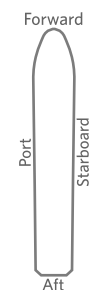
- IC Iconic Suite
- PS Penthouse Suite
- EV Edge Villas
- RS Royal Suite
- CS Celebrity Suite
- AS AquaClass® Sky Suite
- S1 Sky Suite 1
- S2 Sky Suite 2
- S3 Sky Suite 3

- A1 AquaClass 1
- A2 AquaClass 2
- C1 Concierge Class 1
- C2 Concierge Class 2
- C3 Concierge Class 3

- E1 Edge Stateroom w/ Infinite Veranda® 1
- E2 Edge Stateroom w/ Infinite Veranda 2
- E3 Edge Stateroom w/ Infinite Veranda 3
- E4 Edge Stateroom w/ Infinite Veranda 4
- E5 Edge Stateroom w/ Infinite Veranda 5
- ES Edge Single Stateroom w/ Infinite Veranda
- SV Sunset Veranda Stateroom
- P1 Deluxe Porthole View Stateroom w/ Veranda
- P2 Deluxe Porthole View Stateroom w/ Veranda

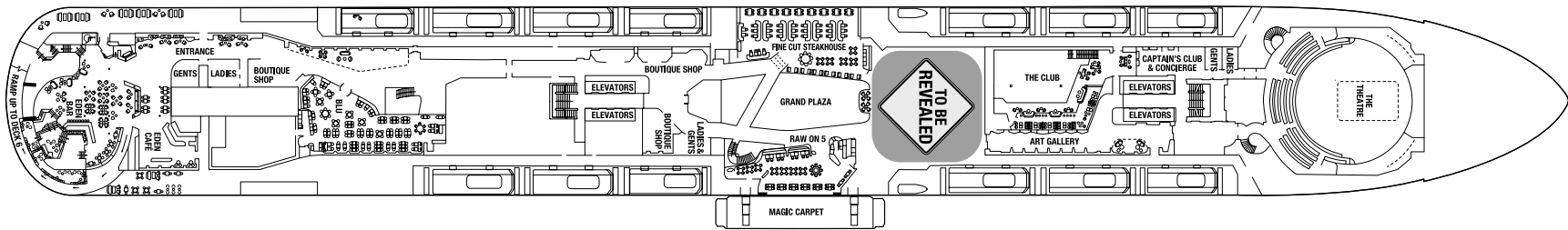
- P0 Panoramic Ocean View Stateroom
- 6 Deluxe Ocean View Stateroom 06
- 7 Ocean View Stateroom 07
- 8 Ocean View Stateroom 08
- 9 Deluxe Inside Stateroom 09
- 10 Deluxe Inside Stateroom 10
- 11 Deluxe Inside Stateroom 11
- 12 Inside Stateroom 12

- + Medical Facility - Deck 2  
Located by Forward-Ship Elevators
- Double Sofa Bed
- Single Sofa Bed
- 5+ Stateroom for occupancy 5 and up
- Connecting Staterooms
- Inside Stateroom Door Location
- ♿ Wheelchair Accessible Stateroom  
Featuring Roll-in Shower

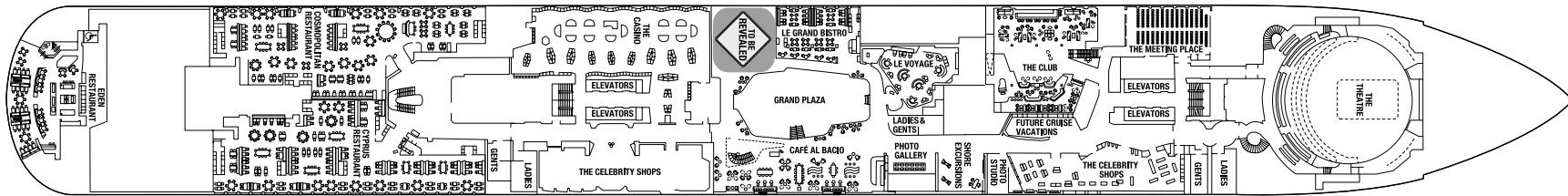


Accessible staterooms with a sofa bed accommodate a maximum of three guests. Accessible suites with a sofa bed accommodate a maximum of four guests.

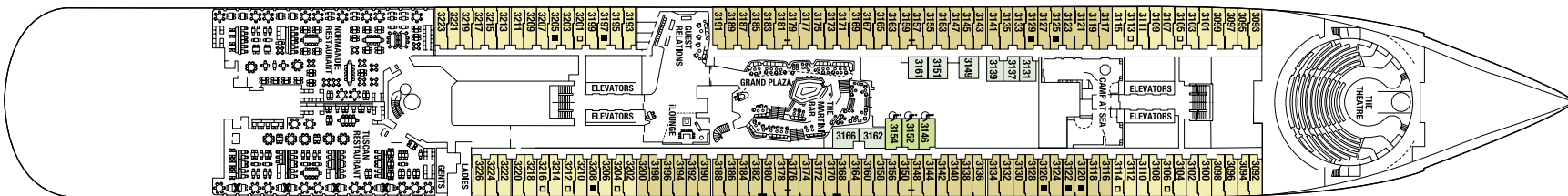




Deck 5

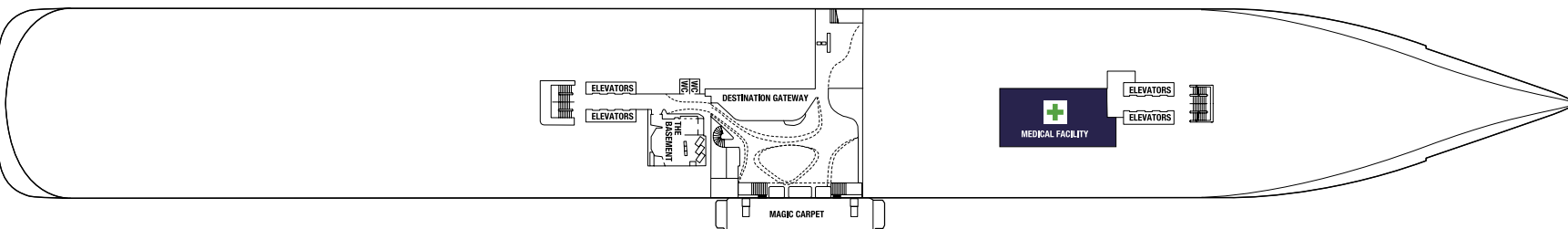


Deck 4



Deck 3

7 8 12 11



Deck 2



DECK PLANS ARE NOT DRAWN TO SCALE. DECK NUMBERS REFLECT UPPER GUEST LEVELS.

For an interactive deck plan experience, 360° virtual tours of stateroom categories, and the most up-to-date deck plans, visit [celebrity.com/deckplans](https://celebrity.com/deckplans).



## CELEBRITY BEYOND<sup>SM</sup> | SUITES



**IC** **ICONIC SUITE**  
1,892 sq. ft.  
Veranda 689 sq. ft.

- The largest suite in our fleet
- Positioned high on top of the ship above the bridge, with sweeping panoramic views from front to back
- Two bedrooms and two full baths
- Celebrity eXhale™ bedding featuring a luxurious king-size Cashmere Mattress
- Dual sinks and separate full shower and whirlpool tub
- Private butler's pantry
- Expansive outdoor space with private hot tub and covered, double daybed
- Surround sound system with 65" smart TV



**EV** **EDGE VILLAS**  
739 sq. ft.  
Veranda 211sq. ft.

- Two-story luxury residences that seamlessly blend indoor and outdoor living
- Private terrace with three-foot-deep plunge pool and inviting lounge furniture
- Direct access to The Retreat®
- Surround sound system with 55" smart TV
- One bedroom and two full baths
- Celebrity eXhale® bedding featuring a luxurious king-size Cashmere Mattress
- Marble master bath with whirlpool tub
- Double washbasins

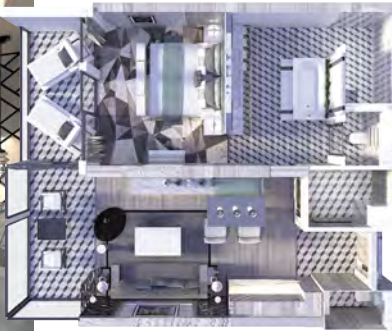


**PS** **PENTHOUSE SUITE**  
1,378 sq. ft.  
Veranda 197 sq. ft.

- Surround sound entertainment system with 65" smart TV
- Two bedrooms and full second bath
- Celebrity eXhale® bedding featuring a luxurious king-size Cashmere Mattress
- Walk-in closets
- Master bath includes whirlpool tub with a view

FOR THE MOST UP-TO-DATE SUITES AND STATEROOMS, VISIT [CELEBRITY.COM/DECKPLANS](https://www.celebrity.com/deckplans)





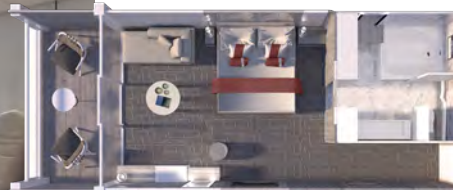
**RS** ROYAL SUITE  
687 sq. ft.  
Veranda 72 sq. ft.

- Floor-to-ceiling sliding glass veranda door and window for maximum views
- Celebrity eXhale® bedding featuring a luxurious king-size Cashmere Mattress
- Walk-in closet
- Expansive open design walk-in shower
- Whirlpool soaking tub
- 55" smart TV



**CS** CELEBRITY SUITE  
401 sq. ft.  
Veranda 100 sq. ft.

- Surround sound entertainment system with 50" smart TV
- Veranda with lounge seating
- Celebrity eXhale® bedding featuring a luxurious king-size Cashmere Mattress
- Mini-fridge
- Split bathroom with dual access
- Tub with shower and sink compartment with direct access from the bedroom
- The two compartments have a connecting door, to accommodate dual use



**S1** SKY SUITE  
319 sq. ft.  
**S2 \*** Veranda 163 sq. ft.  
**S3**

- Celebrity eXhale® bedding featuring a luxurious king-size Cashmere Mattress
- Veranda with lounge seating
- Mini-fridge

**AS** AQUA CLASS  
SKY SUITE  
319 sq. ft.  
Veranda 163 sq. ft.

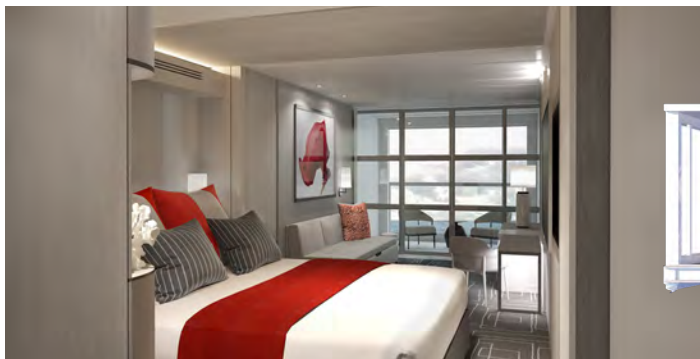
- Celebrity eXhale® bedding featuring a luxurious king-size Cashmere Mattress
- Veranda with lounge seating
- Mini-fridge

**CONNECTING STATEROOMS:** If you're traveling with your family and/or friends, you should consider our convenient adjoining staterooms.

Furniture configuration shown may vary in staterooms. All measurements are approximate.

\* Some suites and staterooms are accessible for wheelchair users and other guests with disabilities. They include roll-in showers, grab bars, and other accessible features. Please see the specific ship deck plans for the locations of all wheelchair accessible suites. For more details, visit [celebrity.com/accessiblestaterooms](https://celebrity.com/accessiblestaterooms).





**A1** \* AQUACLASS® STATEROOM  
WITH INFINITE VERANDA<sup>SM</sup>  
**A2** Total living space 243 sq. ft.  
Veranda 42 sq. ft.

**C1** CONCIERGE CLASS STATEROOM  
WITH INFINITE VERANDA  
**C2** \* Total living space 243 sq. ft.  
**C3** Veranda 42 sq. ft.

**E1** \* **E2** EDGE STATEROOM WITH  
INFINITE VERANDA  
**E3** **E4** Total living space 243 sq. ft.  
Veranda 42 sq. ft.



**ES** EDGE SINGLE STATEROOM  
WITH INFINITE VERANDA  
Total living space 184 sq. ft.  
Veranda 42 sq. ft.



**SV** SUNSET VERANDA STATEROOM  
228 sq. ft.  
Veranda 89 sq. ft.  
SUNSET VERANDA LOCATED AFT OF SHIP.



**P1** DELUXE PORTHOLE VIEW  
STATEROOM WITH VERANDA  
**P2** 202 sq. ft.  
Veranda 40 sq. ft.





**PO** PANORAMIC OCEAN VIEW STATEROOM  
212 sq. ft.



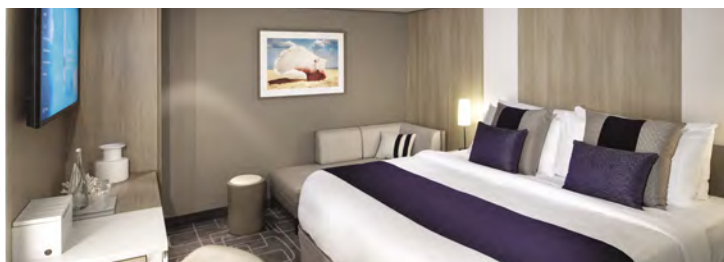
**6** \* DELUXE OCEAN VIEW STATEROOM  
238 sq. ft.



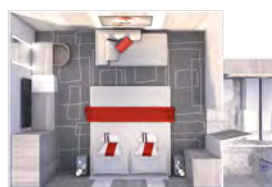
**7** OCEAN VIEW STATEROOM  
200 sq. ft.  
**8**



**9** \* DELUXE INSIDE STATEROOM  
202 sq. ft.  
**10**  
**11**

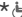


**12** INSIDE STATEROOM  
181 sq. ft.



**CONNECTING STATEROOMS:** If you're traveling with your family and/or friends, you should consider our convenient adjoining staterooms.

Furniture configuration shown may vary in staterooms. All measurements are approximate.

\*  Some suites and staterooms are accessible for wheelchair users and other guests with disabilities. They include roll-in showers, grab bars, and other accessible features. Please see the specific ship deck plans for the locations of all wheelchair accessible suites. For more details, visit [celebrity.com/accessiblestaterooms](http://celebrity.com/accessiblestaterooms).

FOR THE MOST UP-TO-DATE SUITES AND STATEROOMS, VISIT [CELEBRITY.COM](http://CELEBRITY.COM)



# EXPERIENCE THE BEST ON YOUR NEXT VACATION

CELEBRITY EDGE®

**TIME**  
WORLD'S  
**GREATEST PLACES**  
2019



CALL 1-888-283-6374. CONTACT YOUR TRAVEL ADVISOR. VISIT [CELEBRITY.COM](http://CELEBRITY.COM)

**Celebrity** **X** **Cruises®**  
SAIL BEYOND®

CBYDIG21