

OCTOBER 2022 - SEPTEMBER 2023

# MS EUROPA 2

FREEDOM THAT TAKES YOU PLACES.



HAPAG <sup>18</sup>/<sub>91</sub> LLOYD  
CRUISES

<b>EUX2224</b>	From Piraeus (Athens) to Mahe (Seychelles)	01 Oct – 13 Oct 2022
<b>EUX2225</b>	From Mahe (Seychelles) to Cape Town	13 Oct – 28 Oct 2022
<b>EUX2226</b>	From Cape Town to Port Louis (Mauritius)	28 Oct – 10 Nov 2022
<b>EUX2227</b>	From Port Louis (Mauritius) to Mumbai	10 Nov – 24 Nov 2022
<b>EUX2228</b>	From Mumbai to Rangoon	24 Nov – 08 Dec 2022
<b>EUX2229</b>	From Rangoon to Benoa (Bali)	08 Dec – 20 Dec 2022
<b>EUX2300</b>	From Benoa (Bali) to Fiji	20 Dec 2022 – 06 Jan 2023
<b>EUX2301</b>	From Fiji to Auckland	06 Jan – 20 Jan 2023
<b>EUX2302</b>	From Auckland to Sydney	20 Jan – 07 Feb 2023
<b>EUX2303</b>	From Sydney to Benoa (Bali)	07 Feb – 23 Feb 2023
<b>EUX2304</b>	From Benoa (Bali) to Hong Kong	23 Feb – 10 Mar 2023
<b>EUX2305</b>	From Hong Kong to Tokyo	10 Mar – 27 Mar 2023
<b>EUX2306</b>	From Tokyo to Hong Kong	27 Mar – 12 Apr 2023
<b>EUX2307</b>	From Hong Kong to Laem Chabang (Bangkok)	12 Apr – 27 Apr 2023
<b>EUX2308</b>	From Laem Chabang (Bangkok) to Colombo (Sri Lanka)	27 Apr – 11 May 2023
<b>EUX2309</b>	From Colombo (Sri Lanka) to Limassol (Cyprus)	11 May – 22 May 2023
<b>EUX2310</b>	From Limassol (Cyprus) to Istanbul	22 May – 01 Jun 2023
<b>EUX2311</b>	From Istanbul to Piraeus (Athens)	01 Jun – 10 Jun 2023
<b>EUX2312</b>	From Piraeus (Athens) to Venice	10 Jun – 21 Jun 2023
<b>EUX2313</b>	From Venice to Civitavecchia (Rome)	21 Jun – 03 Jul 2023
<b>EUX2314</b>	From Civitavecchia (Rome) to Monte Carlo	03 Jul – 11 Jul 2023
<b>EUX2315</b>	From Monte Carlo to Barcelona*	11 Jul – 20 Jul 2023
<b>EUX2316</b>	From Barcelona* to Bilbao	20 Jul – 31 Jul 2023
<b>EUX2317</b>	From Bilbao to Hamburg	31 Jul – 11 Aug 2023
<b>EUX2318</b>	From Hamburg to St Petersburg	11 Aug – 20 Aug 2023
<b>EUX2319</b>	From St Petersburg to Kiel	20 Aug – 29 Aug 2023
<b>EUX2320</b>	From Kiel to Bergen	29 Aug – 06 Sep 2023
<b>EUX2321</b>	From Bergen to Hamburg	06 Sep – 15 Sep 2023
<b>EUX2322</b>	From Hamburg to Hamburg	15 Sep – 27 Sep 2023

\*The assignment of the ship's berth will be done after this brochure has been published. Adjustments can therefore not be excluded.

**LEGEND**

- Africa & Indian Ocean
- Asia
- Oceania
- Mediterranean
- Northern & Western Europe

**The fastest way to your cruise online.**

For further up-to-date information about a cruise – for example EUX2226 – visit [www.hl-cruises.com/eux2226](http://www.hl-cruises.com/eux2226). You can find the relevant cruise number and the itinerary in the table above.

**Do you have any questions?**

Feel free to get in touch by using our contact form at [www.hl-cruises.com/contact-form](http://www.hl-cruises.com/contact-form) or by sending us an email to [service@hl-cruises.com](mailto:service@hl-cruises.com)



**DEAR GUESTS,**

Freedom That Takes You Places – this philosophy is part of every moment on the EUROPA 2. As unconstrained and individual as your lifestyle, as luxurious and stylish as you expect. Experience the symbiosis of elegance, aesthetics and perfection as the EUROPA 2 takes you to places that showcase the world at its most beautiful.

On a total of 29 cruises, the ship will set sail for coasts on four continents in 2022/2023, offering you exclusive cruise formats and the ultimate in casual luxury. Due to the high level of demand from our guests, the EUROPA 2 will once again visit multifaceted Japan, combined with a premiere: the EUROPA 2 will land in Tianjin for the first time, taking it as a starting point for a trip to the dazzling metropolis of Beijing. The Forbidden City, the Temple of Heaven, the Great Wall of China and Tiananmen Square are just a few of the sights that await you in the Chinese capital. Another highlight of the season is the fascinating Christmas cruise, which will take you from the dreamy island of Bali, via Australia, to the South Seas paradise of Fiji.

You are guaranteed to enjoy many unforgettable moments and the ultimate in relaxation on the best cruise ship in the world according to the Berlitz Cruise Guide 2020.

We look forward to welcoming you on board soon.



*Julian Pfitzner*  
Julian Pfitzner  
CEO  
Hapag-Lloyd Cruises



**We're cleaning up our act!** By voluntarily foregoing heavy fuel oil completely, we are reducing sulphur emissions by 80 % and particulate emissions by 30 %. Since 2020, the entire fleet has instead been using marine gas oil with a maximum sulphur content of 0.1 %.

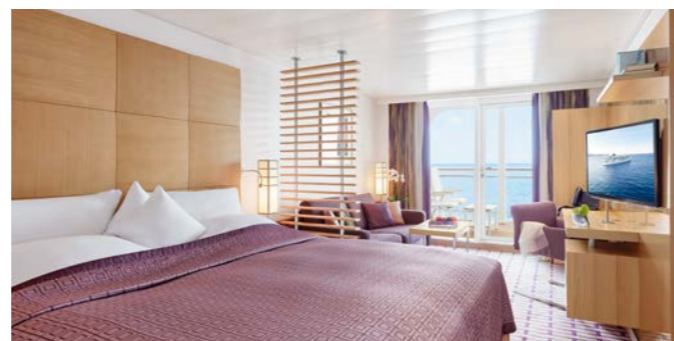
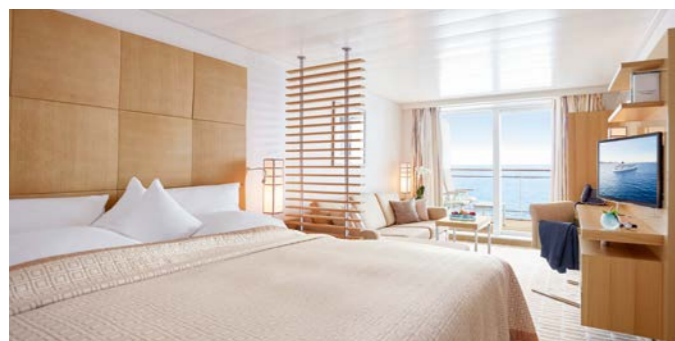


For further information and the latest EUROPA 2 film, visit: [www.hl-cruises.com/europa2](http://www.hl-cruises.com/europa2)



# IN THE MIDDLE OF THE OCEAN – YET STILL AT HOME.

The EUROPA 2 suites are modern and stylish retreats in which to enjoy private moments. Suites up to 114 m<sup>2</sup> (1,227 ft<sup>2</sup>) in size are available – naturally with their own veranda and a wonderful ocean view.

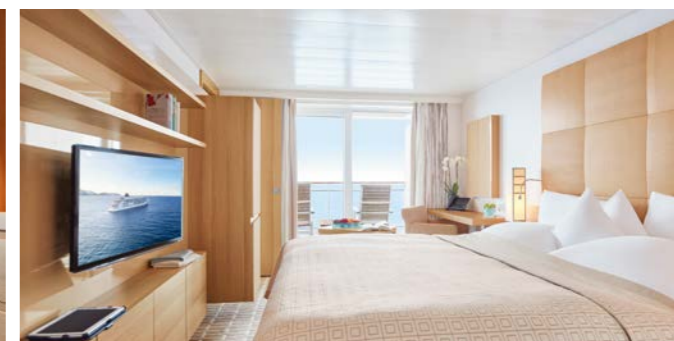


## VERANDA SUITE, 35 m<sup>2</sup> (376 ft<sup>2</sup>)

- Living area: 28 m<sup>2</sup> (301 ft<sup>2</sup>); veranda: 7 m<sup>2</sup> (75 ft<sup>2</sup>).
- Walk-in wardrobe.
- Exclusive living area with a chaise longue.
- Bathtub and separate shower.
- Free mini bar.

## OCEAN SUITE, 35 m<sup>2</sup> (376 ft<sup>2</sup>)

- Living area: 28 m<sup>2</sup> (301 ft<sup>2</sup>); veranda: 7 m<sup>2</sup> (75 ft<sup>2</sup>).
- Natural light in the bathroom.
- Bathroom with two sinks.
- Whirlpool tub and separate shower.
- Separate toilet.
- Free mini bar.

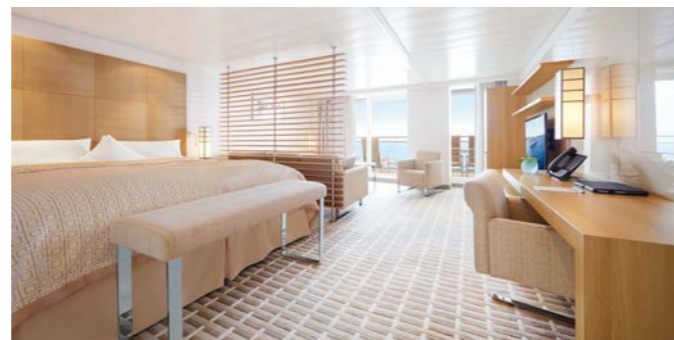
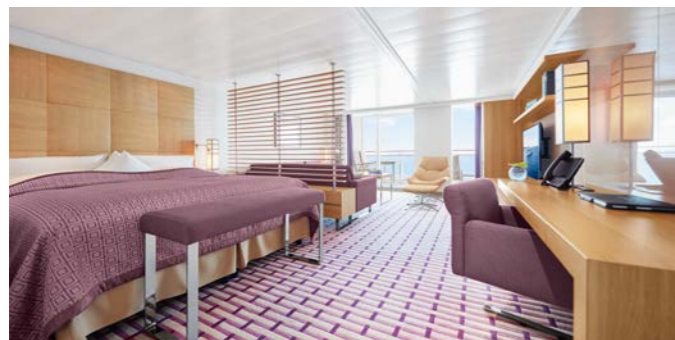


## FAMILY APARTMENT, 2x 27 m<sup>2</sup> (2x 290 ft<sup>2</sup>)

- Living area: 2x 20 m<sup>2</sup> (2x 215 ft<sup>2</sup>); veranda: 14 m<sup>2</sup> (150 ft<sup>2</sup>), divisible into 2x 7 m<sup>2</sup> (2x 75 ft<sup>2</sup>).
- Connecting doors between the rooms and the verandas.
- Separate toilets.
- Free mini bars.

The furniture of one of the living areas has been tailored especially for our younger passengers:

- Two twin beds, one of which is a Pullman (80×200 cm [2.6×6.5 ft]).
- Bathtub (140×80 cm [4.6×2.6 ft]).
- Age-appropriate range of toys and games including a games console.



## GRAND OCEAN SUITE, 52 m<sup>2</sup> (560 ft<sup>2</sup>)

- Living area: 42 m<sup>2</sup> (452 ft<sup>2</sup>); veranda: 10 m<sup>2</sup> (108 ft<sup>2</sup>).
- Bathroom with two sinks.
- Separate toilet.
- Natural light in the bathroom.
- Shower with steam sauna.
- Whirlpool tub.
- Free mini bar.

## PENTHOUSE SUITE, 52 m<sup>2</sup> (560 ft<sup>2</sup>)

- Living area: 42 m<sup>2</sup> (452 ft<sup>2</sup>); veranda: 10 m<sup>2</sup> (108 ft<sup>2</sup>).
- Walk-in wardrobe.
- Bathroom with two sinks.
- Whirlpool tub and separate shower.
- Separate toilet.
- Butler service and free mini bar.

**A Penthouse Suite with fully accessible facilities can also be booked. Here the toilet is in the bathroom.**



## GRAND PENTHOUSE SUITE, 88 m<sup>2</sup> (948 ft<sup>2</sup>)

- Living area: 78 m<sup>2</sup> (840 ft<sup>2</sup>); veranda: 10 m<sup>2</sup> (108 ft<sup>2</sup>).
- Separate living and sleeping areas.
- Separate dining table.
- Guest toilet.
- Bathroom with two sinks.
- Shower with steam sauna.
- Whirlpool and daybed in the bathroom.
- Butler service and free mini bar.
- Exclusive service privileges.

## OWNER SUITE, 114 m<sup>2</sup> (1,227 ft<sup>2</sup>)

- Living area: 99 m<sup>2</sup> (1,066 ft<sup>2</sup>); veranda: 15 m<sup>2</sup> (161 ft<sup>2</sup>).
- Separate living and sleeping areas.
- Separate dining table.
- Guest toilet.
- Bathroom with two sinks.
- Shower with steam sauna.
- Whirlpool and daybed in the bathroom.
- Butler service and free mini bar.
- Exclusive service privileges.

# DELICIOUS DINING IN ELEGANT SURROUNDINGS.

With an eye for detail, the EUROPA 2 chefs are constantly opening up new culinary horizons. They also offer a fine selection of artfully presented dishes at the highest level for those who prefer vegetarian cuisine.

## WELTMEERE



The flagship restaurant at the heart of the EUROPA 2: enjoy an international gourmet menu that changes every day, and embark on a culinary voyage of discovery.

## ELEMENTS



Whether Indian, Vietnamese or traditional Chinese dishes – Elements offers a feast for the senses of everyone with a penchant for the flavours of the East.

## SERENISSIMA



Exquisite classics and new interpretations of the flavours of the Italian Mediterranean: the Serenissima combines the best of Italy's flavours and lifestyle.

## SAKURA



Our sushi master has perfected the art of conjuring up small masterpieces from the finest ingredients. The result is exquisite sushi, with dishes ranging from classic to creative.

## TARRAGON & GRANDE RESERVE



Tarragon stands for great French cuisine and bistro classics, served in an art-deco-style setting. The neighbouring Grande Reserve focuses on fine wines, which you can taste under the direction of a sommelier (at a surcharge).

## YACHT CLUB



Relaxed enjoyment, also under an open sky: at the Yacht Club you can experience the finest cuisine and an unforgettable panoramic ocean view, from breakfast to dinner time.

# PLEASURE IS A MATTER OF STYLE.

Naturally, all six characteristic bars on board are full of style and charm. You can enjoy a unique ambience and excellent drinks in each of the stylish locations.

## COLLINS



The perfect backdrop for the perfect drink. The menu features Cuban specialities from the humid tropics, as well as the largest gin selection on the seven seas.

## BELVEDERE



Providing breathtaking panoramic views, the Belvedere is the ideal place to enjoy a little time out. But it's also an atmospheric lounge with a library, where select coffee and tea specialities are served.

## POOL BAR



This relaxed meeting place on the Pool Deck serves snacks at breakfast and lunchtime, and our famous waffles in the afternoon, plus fresh juices and coffee specialities. It then takes on a laid-back atmosphere into the evening.

## CLUB 2



The Club 2 bar is a lively part of on-board nightlife and it's the place to be for discerning music fans, too. You can also enjoy comedy and cabaret here.

## PIANO BAR



The Piano Bar is modelled on the bars found in classic grand hotels: a place to sit back with a first-class drink while you reflect on the highlights of your day and enjoy music from the Steinway grand piano.

## SANSIBAR



The view from the open-air bar across the ocean and the parties on the dance floor are simply unforgettable. It's also a fantastic location for a late breakfast or a small bite to eat in the afternoon or evening.

# FROM DAY ONE.

The spa and fitness area of the EUROPA 2 is 1,000 m<sup>2</sup> (10,764 ft<sup>2</sup>) in size and has plenty of space for a modern fitness studio, saunas as well as professional cosmetic treatments and massages. More importantly, it has the luxury of plenty of space where you can breathe deeply and let go. This makes it the perfect place to find yourself.



## SPA AND WELLNESS

- COSMETIC TREATMENTS  
Exclusive and professional.
- MESSAGES  
From wellness to physiotherapy.
- PERSONAL SPA  
Private relaxation for couples.
- SAUNAS AND STEAM BATH  
Revitalising and cleansing.

## FITNESS AND GOLF

- CUSTOMISED PROGRAMMES  
For fitness and wellness.
- FITNESS CLASSES  
From aquafit to spinning.
- FITNESS STUDIO  
With personal training.
- GOLF  
Tee off on board and ashore.

# TRAVELLING WITH CERTAIN EXTRAS: THE SPECIAL TRAVEL FORMATS.

### TALK2CHRISTIANSEN | FASCINATING CONVERSATIONS



Sabine Christiansen, a German journalist, brings top-level guests on board for exciting discussions about the latest topics and current events.



### ART2SEA | THE PERFECT SETTING FOR ART



Set sail and discover the world of art – art2sea welcomes prominent artists, gallerists, art experts and curators from great museums.



### MS EUROPA 2 UNPLUGGED® | GOOSEBUMPS INCLUDED



Swap large concert hall shows for an acoustic and personal experience with your star and enjoy exclusive encounters with outstanding musicians.



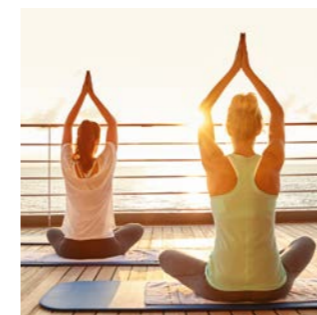
### MS EUROPA 2 UNPLUGGED® FESTIVAL | PURE ACOUSTICS



Experience a unique and diverse range of music and discover the stars of tomorrow.



### IN2BALANCE | A JOURNEY TO FIND YOUR INNER BALANCE



Experience innovative training and relaxation in perfect harmony: the IN2BALANCE programme is like a soothing balm for body and soul.



### FASHION2SEA | FOR THE LOVE OF FASHION



Delve into the fascinating world of design and fashion on the fashion2sea cruise and be inspired as a renowned fashion designer gives an exclusive presentation of his new collection.



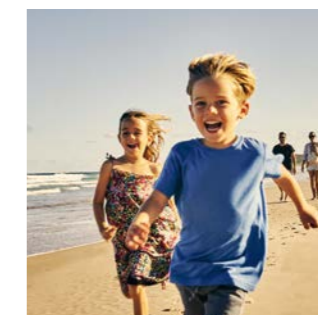
### GOLF & CRUISE | SETTING A COURSE FOR THE GOLF COURSE



Teeing off with an ocean view: travel to the most beautiful places on earth while enjoying a dream-come-true golfing holiday. Always on board: our PGA golf professionals.



### FAMILY CRUISES | FOR FANTASTIC HOLIDAYS



Family cruises are specially tailored to the requirements of children and their parents. As you'd expect they include a special programme on land and on board.



## YOUNG EXPLORERS, GREAT ADVENTURES.

While you enjoy a dream day, your children will become pirates, sandcastle engineers and karaoke champions. They will receive caring supervision tailored to their age as they build a pirate camp, take a banana boat tour or party at the pool. Relax in the knowledge that your children are always safe with us.



## SPECIAL PERSPECTIVES ON THE WATER, ON LAND AND IN THE AIR.

The range of activities on the EUROPA 2 is almost endless. For example, snorkelling in the fascinating underwater world of the South Seas, going on a safari in the national parks of South Africa or cruising with local motorboats between the bizarrely shaped limestone cliffs of Halong Bay. What sets your heart racing? Naturally, you can also take it a little easier and explore cities and cultures with our experts.

### KNOPF CLUB\*

- Great fun for children aged 2 to 3 years.
- Ball pit.
- Sensory wall.
- Steiff Cuddle Lounge.
- Childcare provided by experienced nannies.

### KIDS' CLUB

- Discoveries for children aged 4 to 10 years.
- A perfect on-board environment with a building corner, research laboratory, computer corner, climbing castle and a children's library.
- Age-appropriate children's excursions\*\*.
- Childcare provided by experienced nannies.

### TEENS' CLUB

- A wide range of activities for 11- to 15-year olds, including parties, films, hip hop courses (on selected cruises) and specially designed teens' excursions\*\*.
- Wii games console, PlayStation, table football and table tennis.
- Chill-out area.

### BABY WELCOME PACKAGE

- Available for children up to and including 3 years of age.
- Includes a selection of baby food and care products.
- Available in your suite: changing mat, travel cot and baby bath.
- Special services such as bottle sterilisation and on request a babysitter\*\* in the evening.

### DISCOVER FREEDOM THAT TAKES YOU PLACES ASHORE AS WELL

Discover futuristic buildings, impressive temples and stunning natural paradises or simply savour some time for yourself. Our travel concierge's personal recommendations and the guided shore activities offer you a wide variety of options.

### GUIDED SHORE EXCURSIONS

Our guided shore activities\*\*\* offer you a varied range of visits, discovery trips and active tours as a group, including cycling tours led by the professional EUROPA 2 bike guide.

You can find more information at [www.hl-cruises.com/ashore](http://www.hl-cruises.com/ashore) and at [www.hl-cruises.com/bikeguide](http://www.hl-cruises.com/bikeguide)

### TRAVEL CONCIERGE

Individual travel arrangements\*\*\* to suit your personal requirements and tips that cannot be found in any guidebook: our travel concierge makes it happen from a private buggy safari along picturesque coastlines to an exclusive discovery tour through glittering metropolises. For more information, visit [www.hl-cruises.com/travel-concierge](http://www.hl-cruises.com/travel-concierge)

\*Childcare in the Knopf Club is subject to a surcharge and the number of participants is limited.  
\*\*This service is not included in the cruise price.

\*\*\*This service is not included in the cruise price.

## SUSTAINABILITY AND PREVENTION

# WE TAKE RESPONSIBILITY.

In order to ensure that the habitats on our planet are preserved in the future, a responsible approach to our environment is indispensable. That is why the EUROPA 2 even sails under the 5-star-plus flag when it comes to environmental protection. It is also important to us that we comply with the highest hygiene standards so that we can protect the health of everyone on board.



### ENVIRONMENTAL MANAGEMENT & COMMITMENT



Measures to increase our crews and our passengers environmental awareness for example, training courses, tours of the engine room and lectures by experts.



Hapag-Lloyd Cruises offers sustainable excursions that take place on foot, by bicycle or using forms of transport with low CO<sub>2</sub> emissions. Alternatively, you can reach nearby natural environments and tour starting points with just a short transfer.



As a member of AECO, we promote responsible, sustainable and safe tourism in the Arctic.



The TUI Care Foundation harnesses the positive impacts of tourism to make a difference for people and communities in holiday destinations around the world. We as Hapag-Lloyd Cruises and our guests support the TUI Care Foundation in its endeavours.



### CO<sub>2</sub> OFFSETTING



Offset the CO<sub>2</sub> emissions on your cruise: Hapag-Lloyd Cruises offers this in conjunction with the climate protection organisation myclimate. More information is available at [www.hl-cruises.com/climate-calculator](http://www.hl-cruises.com/climate-calculator)



### RESOURCE MANAGEMENT



Modern seawater desalination technology for the treatment of water, as well as environmentally friendly disposal of sewage sludge.



100 % self-produced water.



Certified biological sewage treatment plants clean all wastewater that is produced.



Eco-friendly waste separation prior to disposal on land in accordance with the MARPOL regulations.



Power management and decreased electricity consumption thanks to energy-saving light-bulbs and LEDs.



Ballast water management to ensure that flora and fauna are not carried into regions where they are not indigenous.



Hapag-Lloyd Cruises has been reducing unnecessary plastic on all its ships for many years already.

### EMISSION REDUCTIONS



By voluntarily foregoing heavy fuel oil completely, we are reducing sulphur emissions by 80 % and particulate emissions by 30 %. Since 2020, the entire fleet has instead been using marine gas oil with a maximum sulphur content of 0.1%.



Nitrogen oxide emissions reduced by 95 % thanks to SCR catalysts.



Below-average CO<sub>2</sub> emissions according to our EEDI certificate.



TBT-free underwater paint.



The bow thrusters and stabilisers run on environmentally friendly ecological oil.



The EUROPA 2 is equipped for cold ironing and makes use of this technology where possible.

### SAFETY AND PREVENTION CONCEPT



#### KEEPING YOU SAFE.

The hygiene standards on board the EUROPA 2 are regularly verified by SGS INSTITUT FRESENIUS. [www.hl-cruises.com/travel-safely](http://www.hl-cruises.com/travel-safely)

### ENERGY EFFICIENCY



Reduced fuel consumption of around 30 % thanks to optimised route management and avoidance of top speeds.



Reduced fuel consumption thanks to the newly developed hull.

### RESPONSIBILITY AT OUR DESTINATIONS



Purchasing locally as a way of shortening our transport routes and supporting the local economy.

### ENVIRONMENTALLY COMPATIBLE PRODUCTION



For the printing of all advertising material, FSC®-certified paper is used and the CO<sub>2</sub> emissions are offset.



### FURTHER INFORMATION

Our Resource and Sustainability Management team will be happy to answer your questions by email at [sustainability@hl-cruises.com](mailto:sustainability@hl-cruises.com)



[www.hl-cruises.com/environment](http://www.hl-cruises.com/environment)

# A MATTER OF COURSE FOR US: THAT LITTLE BIT MORE SERVICE.

## THE CRUISE PRICE (CRUISE ONLY) INCLUDES THE FOLLOWING, A. O.:

- Full board: breakfast, late risers breakfast, lunch and dinner, afternoon tea and coffee with pastries, midnight snack.
- 24-hour suite service.
- Champagne in your suite on the day you arrive.
- A mini bar in the suite with soft drinks and beer (refilled daily).
- A different entertainment programme every day with presentations, concerts, workshops and a high-quality evening programme, e. g. with live shows or readings.
- Free use of the on-board facilities and equipment, a.o. studio with region-specific presentations, library, sauna, fitness area, golf simulators, tablets, email and Internet (free of charge for one hour per guest per day; more information on Internet use at [www.hl-cruises.com/internet](http://www.hl-cruises.com/internet)), snorkelling equipment and bicycles (subject to official approval).
- TV with a wide range of entertainment and information options.
- Zodiac rides (depending on the route and weather conditions) and landings or rides in the ship's Zodiacs or tenders.
- Comprehensive EUROPA 2 cruise material with detailed country information, a document pouch, luggage tags and map material.
- German ship and cruise managers and a German- and English-speaking service crew with a travel concierge, guest relations manager, cruise sales, tour office, tour guides, etc.
- Harbour fees.
- Cancellation fee insurance.

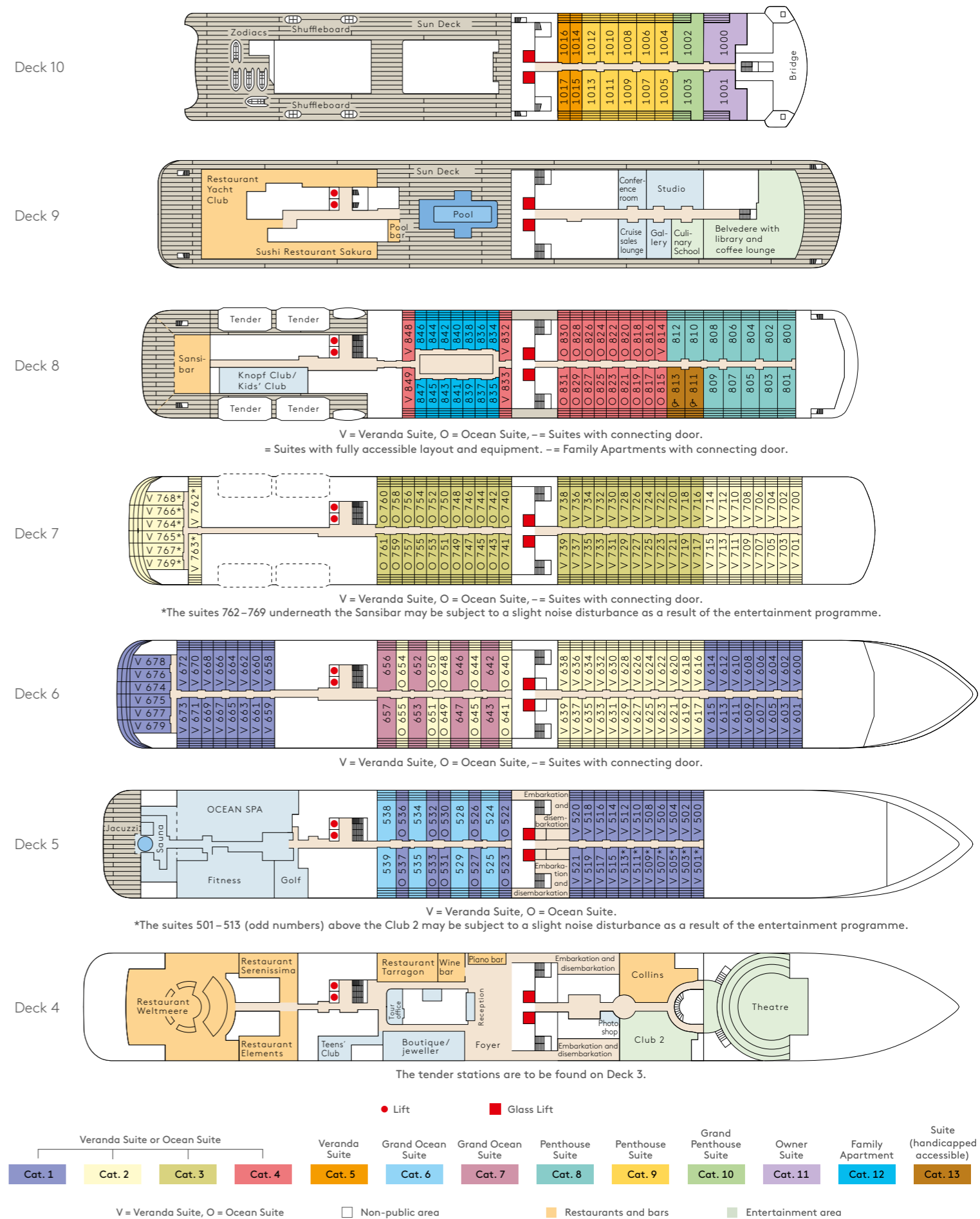


## TECHNICAL DATA.

BUILT:	2013	SUITES:	in total 251
GROSS TONNAGE (GT):	42,830		141 Veranda Suites including veranda at 35 m <sup>2</sup> (376 ft <sup>2</sup> )
SHIPYARD:	STX Europe, St-Nazaire, France		59 Ocean Suites including veranda at 35 m <sup>2</sup> (376 ft <sup>2</sup> )
LENGTH:	225.38 m (739.44 ft)		7 Family Apartments including veranda at 2x 27 m <sup>2</sup> (2x 290 ft <sup>2</sup> )
BEAM:	26.70 m (87.60 ft)		16 Grand Ocean Suites including veranda at 52 m <sup>2</sup> (560 ft <sup>2</sup> )
DRAUGHT:	6.30 m (20.67 ft)		24 Penthouse Suites* including veranda at 52 m <sup>2</sup> (560 ft <sup>2</sup> )
TOTAL POWER:	24,000 kW		2 Grand Penthouse Suites including veranda at 88 m <sup>2</sup> (948 ft <sup>2</sup> )
SPEED:	21 knots		2 Owner Suites including veranda at 114 m <sup>2</sup> (1,227 ft <sup>2</sup> )
STABILISERS:	Blohm + Voss, 2x 14 m <sup>2</sup> (2x 151 ft <sup>2</sup> ) wing area	ON-BOARD LANGUAGES:	German and English
PASSENGER DECKS:	7	ZODIACS (MOTORISED INFLATABLE RUBBER BOATS):	12
PASSENGER CAPACITY:	516	TENDERS (150 SEATS):	4
CREW:	> 370	HOSPITAL:	yes

\*Two of these with fully accessible layout and equipment.

# OUR SUITES, YOUR CHOICE.





# MS EUROPA 2 – A DISTINGUISHED SHIP.



READERS' TRAVEL AWARD 2020

The world's most beautiful cruise line  
2020 Readers' Travel Award Winner

www.hapag-lloyd.com



Be inspired at [www.hl-cruises.com](http://www.hl-cruises.com) or [www.facebook.com/hlcruises](https://www.facebook.com/hlcruises).

Book now: on our website or by phone +49 40 30703070, Hapag-Lloyd Cruises, a TUI Cruises GmbH company, Heidenkampsweg 58, 20097 Hamburg, Germany, via email [service@hl-cruises.com](mailto:service@hl-cruises.com), and at your travel agency.

**Free phone:** Belgium 0800 79421 · Netherlands 08000 220459 · United Kingdom 08000 513829 · USA 877 4457447 or 800 3342724



HAPAG <sup>18</sup>/<sub>91</sub> LLOYD  
CRUISES