

# Follow the call of adventure.

- **Explore untouched regions:**  
a small ship on spectacular routes
- **Expand your horizons:**  
crew and scientists with worldwide expertise
- **Expedition in the purest sense:**  
on numerous Zodiac rides and landings
- **Experience safety in the polar regions:**  
thanks to the highest ice class for passenger ships (PC 6)
- **Travel respectfully:**  
committed to protecting the natural environment
- **Enjoy magical moments as an explorer:**  
with highest standards in terms of service and facilities
- **Even closer to adventure:**  
plenty of deck space, a deck tour at the bow, glass balconies and an on-board marina
- **Inspired by nature:**  
innovative and inviting design concept
- **The freedom to choose:**  
creative cuisine, a spacious spa area and a wide range of sports activities – always with an ocean view



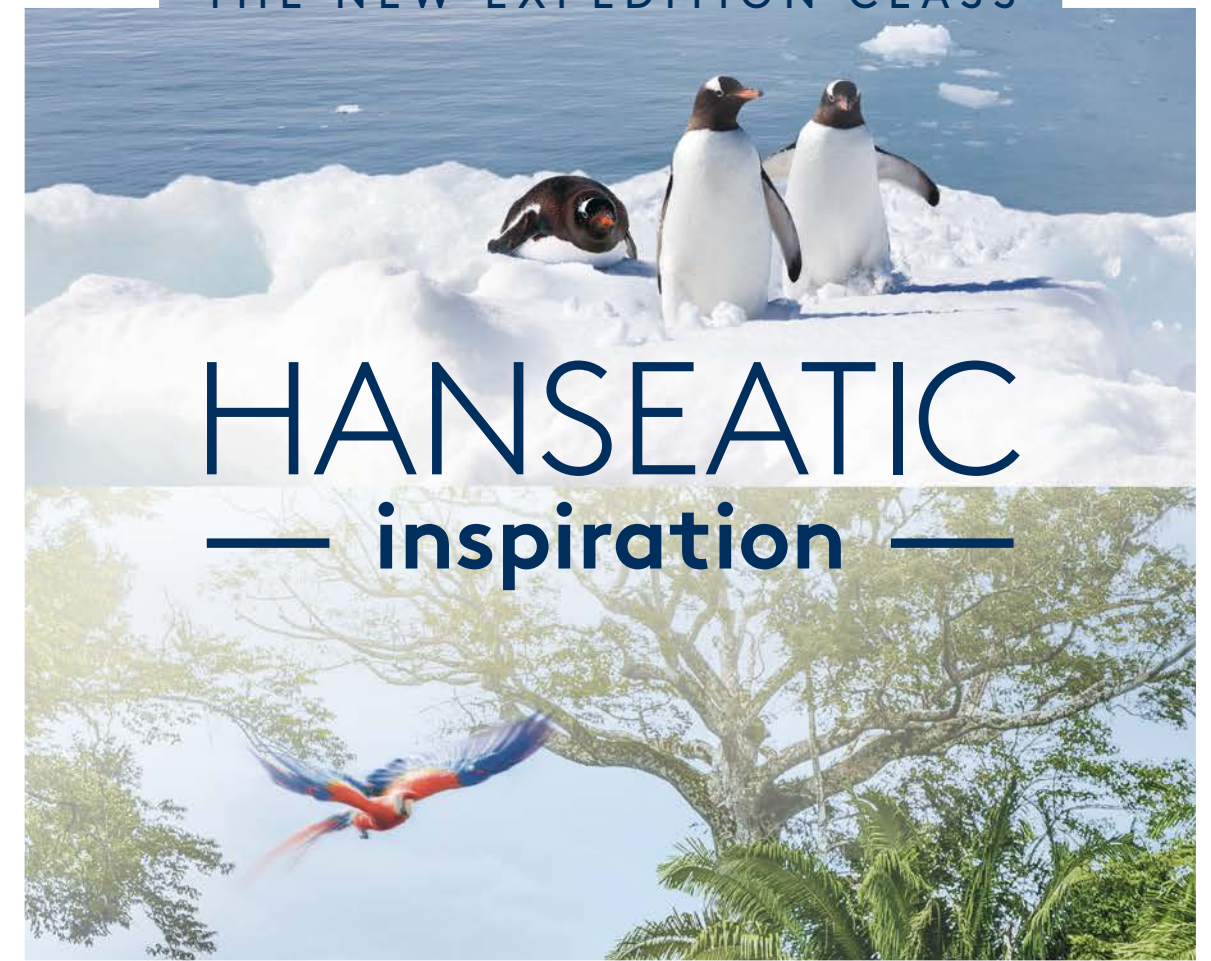
EXPEDITION  
CRUISES

September 2023 – October 2024

HANSEATIC inspiration 2023 – 2024

THE NEW EXPEDITION CLASS

HANSEATIC  
— inspiration —



Be inspired [www.hl-cruises.com](http://www.hl-cruises.com) and [www.facebook.com/hlcruises](https://www.facebook.com/hlcruises). Book now on our website or by phone +49 40 30703070, Hapag-Lloyd Cruises, a TUI Cruises GmbH company, Heidenkampsweg 58, 20097 Hamburg, Germany, via email [service@hl-cruises.com](mailto:service@hl-cruises.com), and at your travel agency. Our prevention and hygiene concept, including essential Covid-19 vaccination information for all passengers aged 12 and over, can be found at [www.hl-cruises.com/travel-safely](http://www.hl-cruises.com/travel-safely).

**Free phone:** Belgium 0800 79421 · Netherlands 08000 220459 · United Kingdom 08000 513829 · USA 877 4457447 or 800 3342724



HAPAG <sup>18</sup>/<sub>91</sub> LLOYD  
CRUISES



HAPAG <sup>18</sup>/<sub>91</sub> LLOYD  
CRUISES





## EXPERTISE



KNOWING WHERE  
WONDERS AWAIT

An adventure with enduring experiences

## A treasure trove of new insights for 30 years

An expedition is not a cruise in the classic sense. It demands many years of expertise.

Whilst other ships compete to be the biggest and carry the most passengers, Hapag-Lloyd Cruises has been pursuing a unique approach since 1993 with its focus on amassing expedition experience. Who else can say that they have successfully mastered the most challenging of routes multiple times – whether it be an impressive 20 sailings through the Northwest Passage, five journeys through the Northeast Passage or five semi-circumnavigations of Antarctica?

Guided by our experience, in 2023/2024 we are again offering you spectacular routes far from the beaten path that are only possible for our small, state-of-the-art expedition class.

We will be combining Franz Josef Land and north-east Spitsbergen on one cruise for the very first time. The circumnavigation of Spitsbergen and the Great Lakes also feature in the programme a number of times. Our classic expeditions are just as spellbinding as Chile's fjords – whether you choose the Arctic or Antarctic, the Amazon or Europe's islands.

And they are always brimming with respect for the sensitive natural environments and esteem for different cultures. Teams of experts on board will open your eyes to hidden gems, which you can delve into deeper in the on-board Knowledge Studio. And you'll have plenty of freedom to enjoy the adventure and comfort at the highest level as you too gain a wealth of experiences that only our expeditions can offer.

We look forward to welcoming you on board.



*Julian Pfitzner*  
Julian Pfitzner  
CEO Hapag-Lloyd Cruises



*Isolde Susset*  
Isolde Susset  
Director Product Management Expedition Cruises



We're cleaning up our act. Since 2020, we have been using marine gas oil with a maximum sulphur content of 0.1% both in our main cruising areas, such as the Arctic, Antarctic and Kamchatka, and in all other regions as well. This means that this fuel is used all year round by the entire fleet. By voluntarily foregoing heavy fuel oil completely, we are reducing sulphur emissions by 80% and particulate emissions by 30%.





EXPERIENCE  
THE WORLD  
IN ALL ITS  
FACETS.

Always well informed with  
our newsletter:

- Enjoy exclusive offers
- Get monthly travel inspirations
- Discover all the advantages  
of cruising with our small,  
intimate ships



Register now:

[www.hl-cruises.com/newsletter](http://www.hl-cruises.com/newsletter)



HAPAG <sup>18</sup>/<sub>91</sub> LLOYD  
CRUISES

Travel calendar September 2023 to October 2024

September 2023

INS2319	27 Sep – 8 Oct 2023 11 days	Toronto/Canada – Milwaukee/USA	Great Lakes	page 62
---------	--------------------------------	--------------------------------	-------------	---------

October 2023

INS2320	8 Oct – 26 Oct 2023 18 days	Milwaukee/USA – Halifax/Canada	Great Lakes and St Lawrence River	page 64
INS2321	26 Oct – 3 Nov 2023 8 days	Halifax/Canada – Colon/Panama	Sea cruise	page 65

November 2023

INS2322	3 Nov – 17 Nov 2023 14 days	Colon/Panama – Valparaíso/Chile	Expedition Panama Canal and South America	page 68
INS2323	17 Nov – 1 Dec 2023 14 days	Valparaíso/Chile – Ushuaia/Argentina	Expedition Chilean Fjords	page 70

December 2023

INS2324	1 Dec – 17 Dec 2023 16 days	Ushuaia/Argentina – Ushuaia	Grand Expedition Antarctica	page 58
INS2400	17 Dec 2023 – 4 Jan 2024 18 days	Ushuaia/Argentina – Ushuaia	Grand Expedition Antarctica	page 58

January 2024

INS2401	4 Jan – 22 Jan 2024 18 days	Ushuaia/Argentina – Ushuaia	Grand Expedition Antarctica	page 58
INS2402	22 Jan – 9 Feb 2024 18 days	Ushuaia/Argentina – Ushuaia	Grand Expedition Antarctica	page 58

February 2024

INS2403	9 Feb – 28 Feb 2024 19 days	Ushuaia/Argentina – Montevideo/Uruguay	Grand Expedition Antarctica	page 59
INS2404	28 Feb – 14 Mar 2024 15 days	Montevideo/Uruguay – Belem/Brazil	Brazil	page 72

March 2024

INS2405	14 Mar – 1 Apr 2024 18 days	Belem/Brazil – Iquitos/Peru	Expedition Amazon (upstream)	page 74
---------	--------------------------------	-----------------------------	------------------------------	---------

April 2024

INS2406	1 Apr – 19 Apr 2024 18 days	Iquitos/Peru – Belem/Brazil	Expedition Amazon (downstream)	page 76
INS2407	19 Apr – 30 Apr 2024 11 days	Belem/Brazil – Porto/Portugal	Atlantic crossing	page 77
INS2408	30 Apr – 13 May 2024 13 days	Porto/Portugal – Hamburg/Germany	Expedition circumnavigation of Great Britain	page 80

May 2024

INS2410	23 May – 31 May 2024 8 days	Hamburg/Germany – Hamburg	Short cruise northern Germany*	page 82
INS2411	31 May – 15 Jun 2024 15 days	Hamburg/Germany – Longyearbyen/Norway	Expedition Norway and north-west Spitsbergen	page 86

June 2024

INS2412	15 Jun – 25 Jun 2024 10 days	Longyearbyen/Norway – Tromsø/Norway	Expedition Spitsbergen adventure	page 88
INS2413	25 Jun – 5 Jul 2024 10 days	Tromsø/Norway – Longyearbyen/Norway	Expedition Spitsbergen adventure	page 88

July 2024

INS2414	5 Jul – 15 Jul 2024 10 days	Longyearbyen/Norway – Longyearbyen	Expedition Spitsbergen adventure	page 88
INS2415	15 Jul – 25 Jul 2024 10 days	Longyearbyen/Norway – Tromsø/Norway	Expedition Spitsbergen adventure*	page 88
INS2416	25 Jul – 11 Aug 2024 17 days	Tromsø/Norway – Longyearbyen/Norway	Expedition Franz Josef Land and north-east Spitsbergen	page 90

August 2024

INS2417	11 Aug – 29 Aug 2024 18 days	Longyearbyen/Norway – Kangerlussuaq/Greenland	Expedition Spitsbergen, Iceland and Greenland*	page 92
INS2418	29 Aug – 16 Sep 2024 18 days	Kangerlussuaq/Greenland – Toronto/Canada	Expedition Greenland, Newfoundland and St Lawrence River	page 94

September 2024

INS2419	16 Sep – 29 Sep 2024 13 days	Toronto/Canada – Milwaukee/USA	Great Lakes	page 98
INS2420	29 Sep – 12 Oct 2024 13 days	Milwaukee/USA – Toronto/Canada	Great Lakes	page 100

\*Voyage for Young Explorers (for more information, see page 33).





FOR A  
CHRONOLOGICAL  
OVERVIEW OF  
OUR CRUISES,  
SEE PAGE 5

# Contents

## The new expedition class

<b>Expedition</b>	<b>8</b>
Excellent reasons for a cruise with us	10
The new expedition class	12
<b>Responsibility</b>	<b>14</b>
Safety in a class of its own	16
The extraordinary every day	18
Sustainability and prevention	20
<b>Discoveries</b>	<b>22</b>
Exceptional amount of open deck space	24
Experiences only possible by Zodiac	26
In harmony with nature	28
<b>A world of knowledge</b>	<b>30</b>
Teams of top-class experts on every cruise	32
Plenty of space for lectures and self-study	34
<b>Real happiness</b>	<b>36</b>
Fantastic views to whet your appetite	38
Indulge in a unique atmosphere	40
Chart a course for well-being	42
Cabins	44
Junior Suites	46
Grand Suites	47

## All expeditions by region

Antarctica	48
Great Lakes	60
Central and South America	66
Northern and Western Europe	78
The Arctic	84
Great Lakes	96



A large, snow-capped mountain peak dominates the background, its rugged ridges and gullies partially covered in white snow. In the foreground, two hikers wearing blue jackets and backpacks stand on a rocky, layered outcrop, looking out over a misty valley. The sky is a pale blue with soft, white clouds. The overall scene conveys a sense of adventure and exploration in a vast, natural landscape.

EXPEDITION

ADVENTURERS' HEARTS  
BEAT EVEN FASTER WHEN  
CLOSE TO NATURE



Venture further into regions than other ships, open doors to new experiences that would otherwise remain closed and get exceptionally close to the wonders of nature: in places where larger cruise ships would have to turn back, the HANSEATIC inspiration is right in its element. It is the interplay of a small, modern ship, fascinating destinations and the extensive experience of our captains and crew that opens up new dimensions of discovery. We enable you to experience and get to know spectacular regions in a unique and highly intensive manner. You expand your knowledge and explore regions visited by very few others: gaining a new perspective about how we need to protect our planet in the midst of a majestic icy landscape, for instance. Or listening to the wonders of creation on the Amazon at night. Explore uncharted territory at the ends of the earth and equally exciting destinations practically on your doorstep. What emotions will these experiences stir up for you? How will your world view change? What will you take home? The answers await on board our ship: expedition in the purest sense.

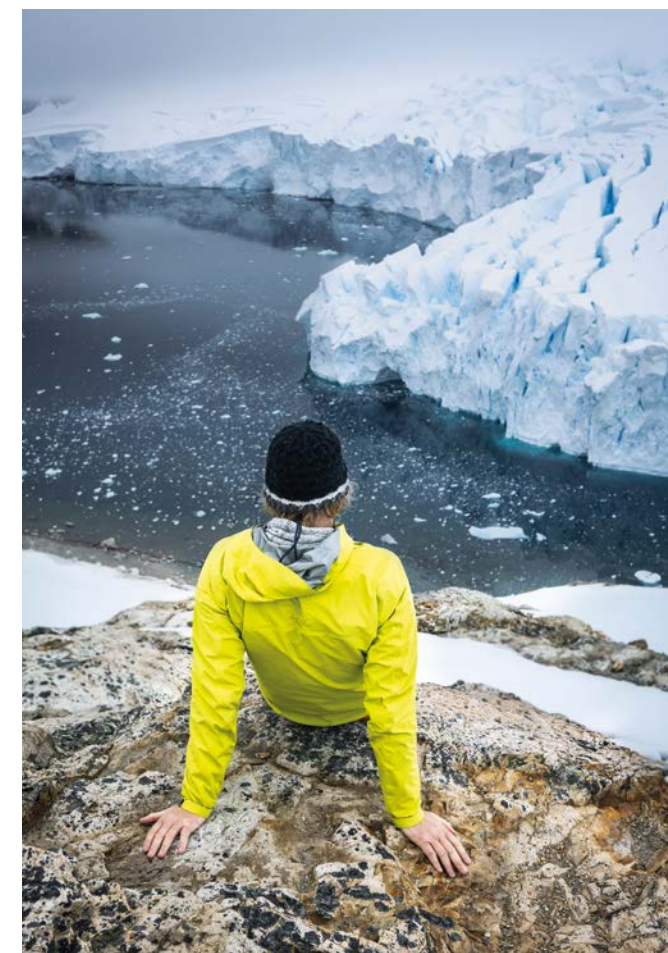


## Excellent reasons for a cruise with us

# Expedition spirit in all its forms



- **A small, state-of-the-art expedition ship**  
that combines adventure and comfort perfectly
- **Spectacular routes to remote regions**  
where other ships have to turn back
- **Cruises that respect nature, wildlife and cultures**  
following trails but leaving no trace
- **Adventures by Zodiac**  
in any natural environments and places without a port
- **Closer to nature on board**  
thanks to an exceptional amount of open deck space
- **A small group of like-minded people (max. 230 guests)**  
for more space and a truly personal atmosphere
- **Captains and crews with decades of expertise**  
who bring their skills to each cruise
- **See and understand more thanks to teams of experts**  
who share their knowledge in presentations, discussions  
and ashore
- **Committed crew with exceptional service**  
and attention to detail for feel-good moments
- **Reach new frontiers in safety**  
thanks to features such as the highest ice class for  
passenger ships (PC 6)







#### RESTAURANTS

Our three restaurants (a total of 300 seats inside, 110 seats outside) pamper you with a wide selection of cuisine and free choice of seating.



#### HanseAtrium

Enhance your spectacular experiences with fascinating knowledge in the multi-functional lounge with state-of-the-art LED and presentation technology.



#### SPORTS CLUB

With an area of around 100 m<sup>2</sup> (1,076 ft<sup>2</sup>), modern equipment and a course room for individual training or with an instructor – ocean view included.



#### OCEAN SPA

A light-filled spa and sauna area covering 215 m<sup>2</sup> (2,314 ft<sup>2</sup>), plus 25 m<sup>2</sup> (269 ft<sup>2</sup>) of outdoor space with a view of the open sea.



#### SPECIALITY RESTAURANT NIKKEI

Japanese/Peruvian cuisine, for special evenings and at no surcharge.



#### OCEAN ACADEMY

From the Study Wall to the Study Poster – our interactive Knowledge Studio is the ideal place for self-study.

360° walking tour  
on board at  
[WWW.HL-CRUISES.COM](http://WWW.HL-CRUISES.COM)



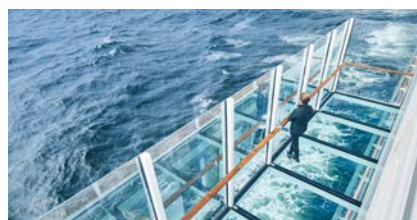
## The new expedition class HANSEATIC inspiration

On-board languages: German/English



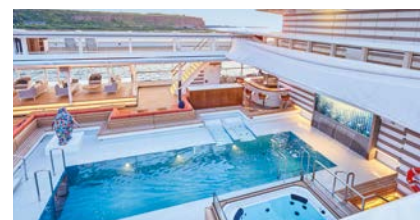
#### MARINA

The marina is the convenient starting point for a variety of activities such as kayaking (at a surcharge), stand-up paddling or snorkelling.



#### GLASS BALCONIES

Two extendible glass-floored balconies on the Sun Deck provide a unique feeling of floating over the ocean.



#### POOL AREA/BAR

A wonderful place to relax with water loungers. A canopy enables this 630 m<sup>2</sup> (6,781 ft<sup>2</sup>) area to be used flexibly.



#### INSPIRATION WALK

The deck tour at the bow puts you in the front row for wildlife sightings.



#### OBSERVATION LOUNGE

See more, experience more: the superbly equipped bar with library brings the excitement indoors with a 180-degree panoramic view.



#### SUSTAINABILITY

Optimised ship hull, SCR catalytic converter, equipped for cold ironing and marine gas oil 0.1 %. See page 20 and [www.hl-cruises.com/environment](http://www.hl-cruises.com/environment)





Humankind is dwarfed by the scale of the natural world. When you witness the beauty of vast oceans, dramatic coastlines and remote archipelagos for yourself, you will have no doubt that these treasures are sensitive and must be protected. This is a cause that has always been dear to our hearts and we are aware of the great responsibility that we bear as visitors. That's why spectacular expeditions to the most remote corners of the world and a commitment to protect nature have gone hand in hand for us for decades. A small ship and a small number of guests on board and ashore – a maximum of 230 passengers, and even a limit of 199 in the Antarctic and around Spitsbergen. This special type of “downsizing” gives you the chance to explore exceptional regions and develop a special appreciation – for the flora and fauna, as well as for the people who live there. We call it respectful travel. You can simply call it sustainable adventures that leave lasting memories.



RESPONSIBILITY

SEE BEAUTY CLEARLY  
WITH RESPECT





**Charting a course with technology**  
State-of-the-art navigation, positioning and communications systems place our new expedition ship in a technical league of its own – we'll be happy to show you when you visit the bridge.

## Safety in a class of its own

# Protecting people and nature

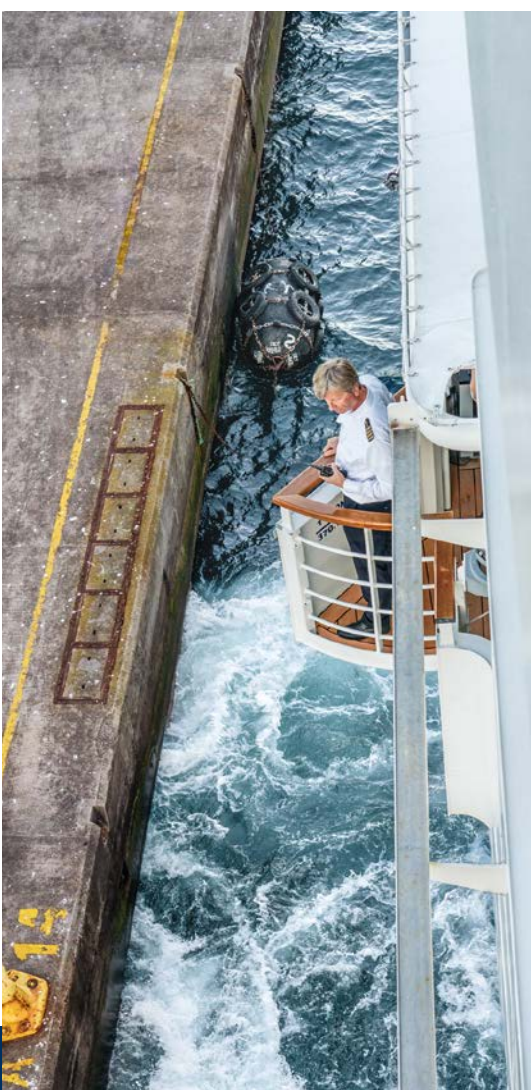
Expedition cruises leave no room for experiments – nautical expertise, serious planning, caution and care are essential to ensure safety and wonderful experiences. Only cruise operators like us who meet the requirements of the Polar Code of the International Maritime Organisation (IMO) and are certified accordingly may travel in polar waters. The specifications comprise ship construction, equipment and training of ships and their crews. For polar

expeditions, our expedition ship is constructed in a completely different way to “normal” (cruise) ships – it has thicker steel plates and numerous additional frames at the main ice area of the hull. The ship can move through polar waters for longer periods without stopping for provisions or fuel – for example on the Northwest Passage. With the highest ice class for passenger ships (PC 6), our expedition ship can push aside the broken pack ice

and, if necessary, travel safely through solid ice cover of around 90 cm (35 in.) thick. On our expeditions, we not only adhere to stringent legal provisions, but go beyond these requirements with voluntary measures to protect the regions we visit. Therefore, we completely forgo the use of heavy fuel oil and, since 2020, have exclusively been using marine gas oil with a maximum sulphur content of 0.1 % (LS-MGO).







#### Charting a course with knowledge

No ship technology can show us where polar bears are roaming, pods of whales are surfacing inquisitively and tabular icebergs are jutting high into the sky – but intuition and experience can.



## The extraordinary every day

# Expedition experience since 1993

**W**hy explore the world with us? Because we truly know how to do expeditions. Our many years of experience in particular allow us to plan, prepare and perform these highly complex journeys. In 1891, Albert Ballin, who would later become the general director of HAPAG, sent the Augusta Victoria to the Mediterranean with 241 passengers – the birth of the

modern cruise. This pioneering spirit was continued for almost 30 years by the expedition ship BREMEN and 25 years by the former HANSEATIC. Their expedition expertise, award-winning route concept and numerous pioneering feats shape all of our current cruises. Together with their team, each of our captains has mastered many nautically challenging routes

in extremely remote regions. They'll share their passion for discovering the new and unfamiliar with you. Particularly in the polar regions, they check the route daily, look for even more impressive alternatives and react flexibly to the weather and ice. This expertise has proven to provide the best foundations for expeditions and will take you to places that other ships cannot reach.

#### Challenging routes, legendary passages

Our expedition ships have completed 20 journeys through the Northwest Passage, five through the Northeast Passage, five semi-circumnavigations of the Antarctic and even one complete circumnavigation of the Arctic.





## Sustainability and prevention

# We take responsibility

Experiencing the beauty of our planet brings certain responsibilities along with it. For that reason, our aim on cruises with our new expedition class is to preserve vulnerable habitats and raise awareness of how we can cultivate a respectful attitude towards flora and fauna. Those who explore the world with us know that these treasures are worth protecting.

The combination of various measures ensures that the highest standards of sustainability are met around the world. We are also committed to continuously improving the environmental performance of our small, state-of-the-art ships so that we protect the very things that have made expedition cruises with Hapag-Lloyd Cruises so fascinating over the decades.

### ENVIRONMENTAL MANAGEMENT AND COMMITMENT



Long-standing membership of IAATO (International Association of Antarctica Tour Operators) and support for well-known organisations that aim to protect the Antarctic.



All of our Antarctic cruises must be approved by the German Federal Environment Agency (Umweltbundesamt).



As a member of AECO (Association of Arctic Expedition Cruise Operators), we promote responsible, sustainable and safe tourism in the Arctic.



We are involved in the Clean Up Svalbard project around Spitsbergen. Together with our guests, we gather rubbish and ensure it is disposed of correctly.



The TUI Care Foundation works with Hapag-Lloyd Cruises to support people and the environment in cruise destinations around the globe.



Hapag-Lloyd Cruises offers sustainable excursions that take place on foot, by bicycle or using forms of transport with low CO<sub>2</sub> emissions.



### ENERGY EFFICIENCY



Reduction in fuel consumption of around 30 % thanks to optimised route management and avoidance of top speeds.



Reduced fuel consumption thanks to the newly developed hull.



The PROMAS rudder with a special propeller also helps reduce fuel consumption and therefore lower emissions.

### RESOURCE MANAGEMENT



Modern seawater desalination technology and certified biological sewage treatment plants for the treatment of water, as well as appropriate disposal of sewage sludge.



Waste separation prior to disposal on land in accordance with the MARPOL regulations, ensuring less impact on the environment.



Power management and decreased electricity consumption thanks to energy-saving light bulbs and LEDs.



Ballast water management to ensure that flora and fauna are not carried into regions where they are not indigenous.



Hapag-Lloyd Cruises has been reducing unnecessary plastic on all its ships for many years already.

### EMISSION REDUCTIONS



Already since 2020, we have been using marine gas oil with a maximum sulphur content of only 0.1 % both in our main cruising areas, such as the Arctic, Antarctic and Kamchatka, and in all other regions. This means that this fuel is used all year round by the entire fleet. By voluntarily foregoing heavy fuel oil completely, we are reducing sulphur emissions by 80 % and particulate emissions by 30 %.



Nitrogen oxide emissions reduced by 95 % thanks to SCR catalysts.



Below-average CO<sub>2</sub> emissions according to our EEDI certificate.



The bow thrusters and stabilisers run on eco-efficient ecological oil.



Our expedition fleet is equipped for cold ironing and makes use of this technology where possible.



TBT-free underwater paint.

### SAFETY AND PREVENTION CONCEPT



#### KEEPING YOU SAFE.

The regular hygiene inspections on our ships comply with national and international healthcare standards. [www.hl-cruises.com/travel-safety](http://www.hl-cruises.com/travel-safety)

### CO<sub>2</sub> OFFSETTING



Offset the CO<sub>2</sub> emissions on your cruise: Hapag-Lloyd Cruises offers this in conjunction with the climate protection organisation myclimate. More information is available at [www.hl-cruises.com/climate-calculator](http://www.hl-cruises.com/climate-calculator)



### RESPONSIBILITY AT OUR DESTINATIONS



We prepare our guests both in advance and on board before they visit fragile ecosystems.



Wherever possible and reasonable, we buy local produce to shorten our transport routes and support the local economy.

### ENVIRONMENTALLY COMPATIBLE PRODUCTION



All advertising materials are printed on FSC®-certified paper.

### FURTHER INFORMATION

Our Sustainability Management team will be happy to answer your questions by email at [sustainability@hl-cruises.com](mailto:sustainability@hl-cruises.com)



[www.hl-cruises.com/environment](http://www.hl-cruises.com/environment)





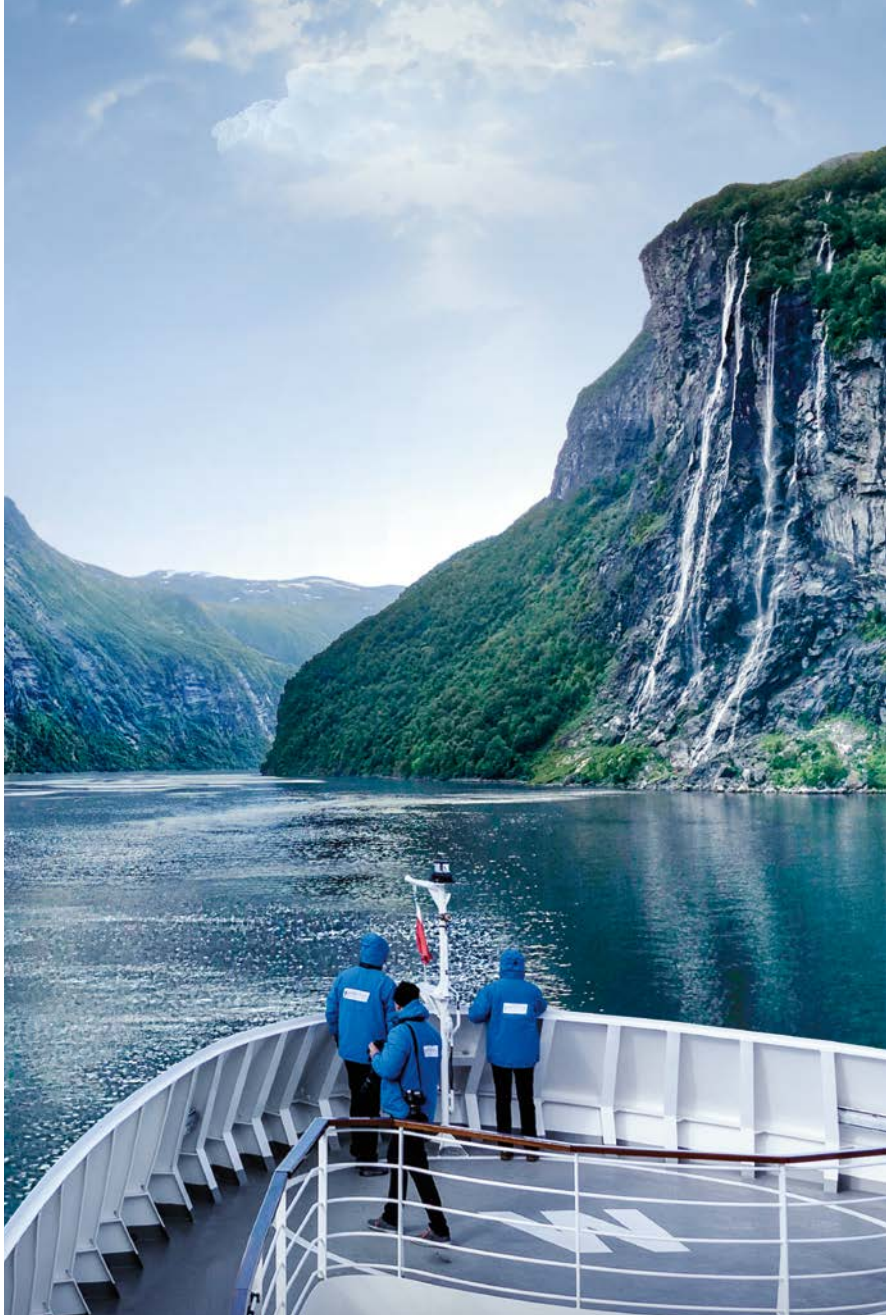
DISCOVERIES

UNDERSTANDING  
BACKGROUNDS  
OPENS DOORS



The digitisation of the world has somewhat knocked people's spirit of discovery off course. Hapag-Lloyd Cruises gets this spirit back on a pioneering path with its expedition cruises and brings back value and meaning to real experiences. Immerse yourself in unhurried, unfiltered authenticity. See detours not as delays but as gateways to something new. Recognise unplanned events as an invitation to regain flexibility in your thinking. You'll discover all of this on every expedition with us – it is what makes these adventures so exceptional. They unleash emotions and provide out-of-the-ordinary insights. These aren't routes from A to B – they are ways to rediscover the world in the footsteps of legendary explorers. The extraordinary awaits you – every day.





**At the heart of the experience**

Get closer to nature than the captain from your “front row” spot on the deck tour at the bow. Or float above the ocean on two 10 m (32.8 ft) long glass balconies that extend up to 2 m (6.6 ft) from the sides of the ship.



**Exceptional amount of open deck space**

**Boundless, weightless, freedom**

You don't want to miss a single second when whales jump for joy and polar bears take an icy bath. And you won't. Because we offer more open deck space than any other expedition ship. Hear the ice cracking as bizarre formations glide past below you or watch as pods of dolphins come for a visit. Feel yourself to be part of nature.

And while we of course maintain a respectful distance, sometimes animals come up close out of sheer curiosity. The Observation Deck is also built with “foresight” with various observation levels and mounted binoculars. Inside, the Observation Lounge shows just how comfortable pioneering spirit can be, as you enjoy the 180-degree view through

the floor-to-ceiling windows with a glass of red wine. The ship's shallow draught and great manoeuvrability take you to the heart of experiences in a way large ships can't. Even legendary pioneers like Amundsen, Shackleton and Cook might have been a little jealous – with us, you can explore the world like nobody else.





## Experiences only possible by Zodiac

# Disembark for adventure

Feel the wind in your hair and the spray on your skin when our expedition rubber boats take you deep into the wonders of nature. Where even our small ship can travel no further and there are no ports,

you will board the Zodiacs in small groups with no long waiting times. Cruise off imposing glaciers and drift on the waves with seals. Negotiate reefs to explore remote islands. Even on narrow waterways, the Zodiacs

glide through the water so that you – accompanied by the experts and the expedition leader – can observe the nature and wildlife in silence.

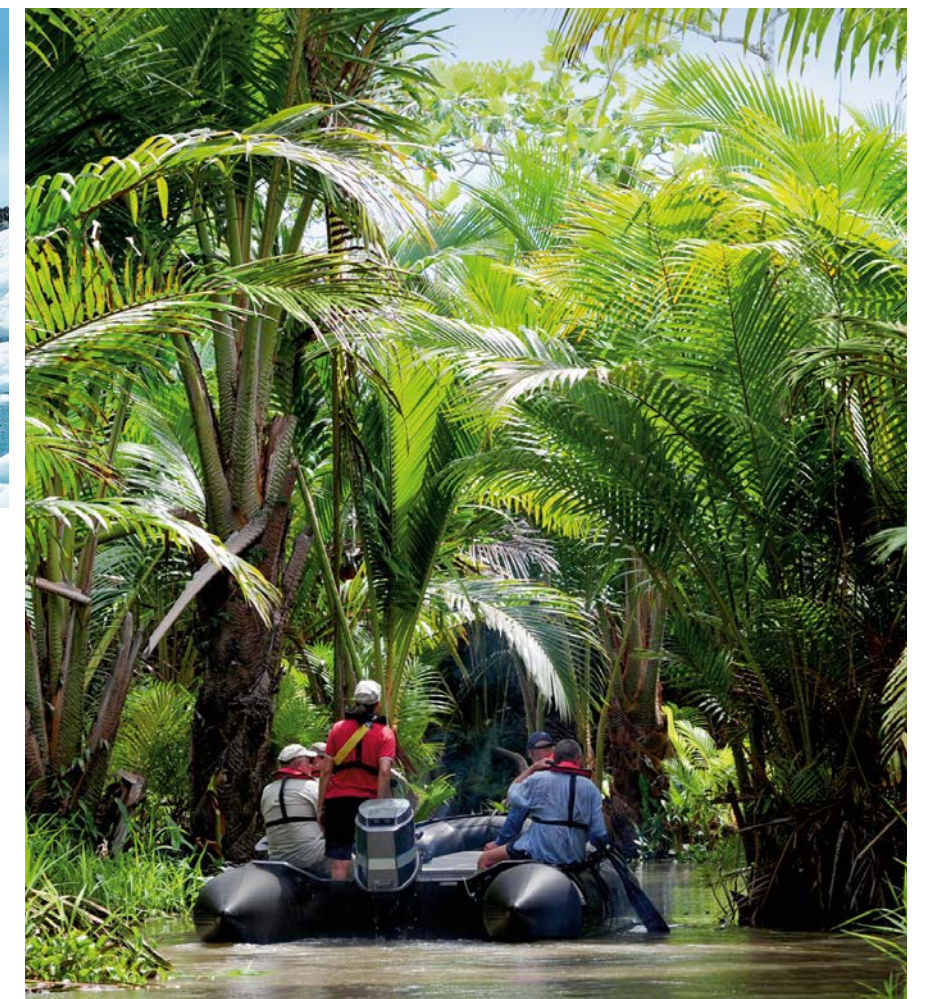


**If there's no port ...**  
... that's where the fun begins for us. Trips and landings by Zodiac will take you to regions that are almost out of reach.



### 17 Zodiacs

Once guests have boarded via the ship's side gate, the specially trained pilots take the Zodiacs to untouched coasts.





In harmony with nature

# Pioneering spirit in action

Grand expedition moments await you in the most beautiful regions on earth, where your activities promise to make very special memories. For example, it always pays to look beneath the surface of the water: the marina at the stern is the perfect starting point for snorkelling tours. Enjoy relaxing yet sporty stand-up paddling and reach your own dream destinations – depending on good local conditions and pleasant water temperatures, of course. Hikes and wildlife sightings with expert guides will invigorate your body and mind. Selected Antarctic expeditions will also provide a unique opportunity to pitch your tent in the ice. Plenty of active experiences in the tradition of great pioneers.



**See the sights on the move**  
Each cabin/suite has a pair of high-quality binoculars and Nordic Walking poles ready for you to use.

**Lots of outdoor equipment available**  
Borrow parkas, rubber boots, snorkelling equipment, fishing rods, stand-up paddle boards, snowshoes and kayaks (the latter is subject to a surcharge).



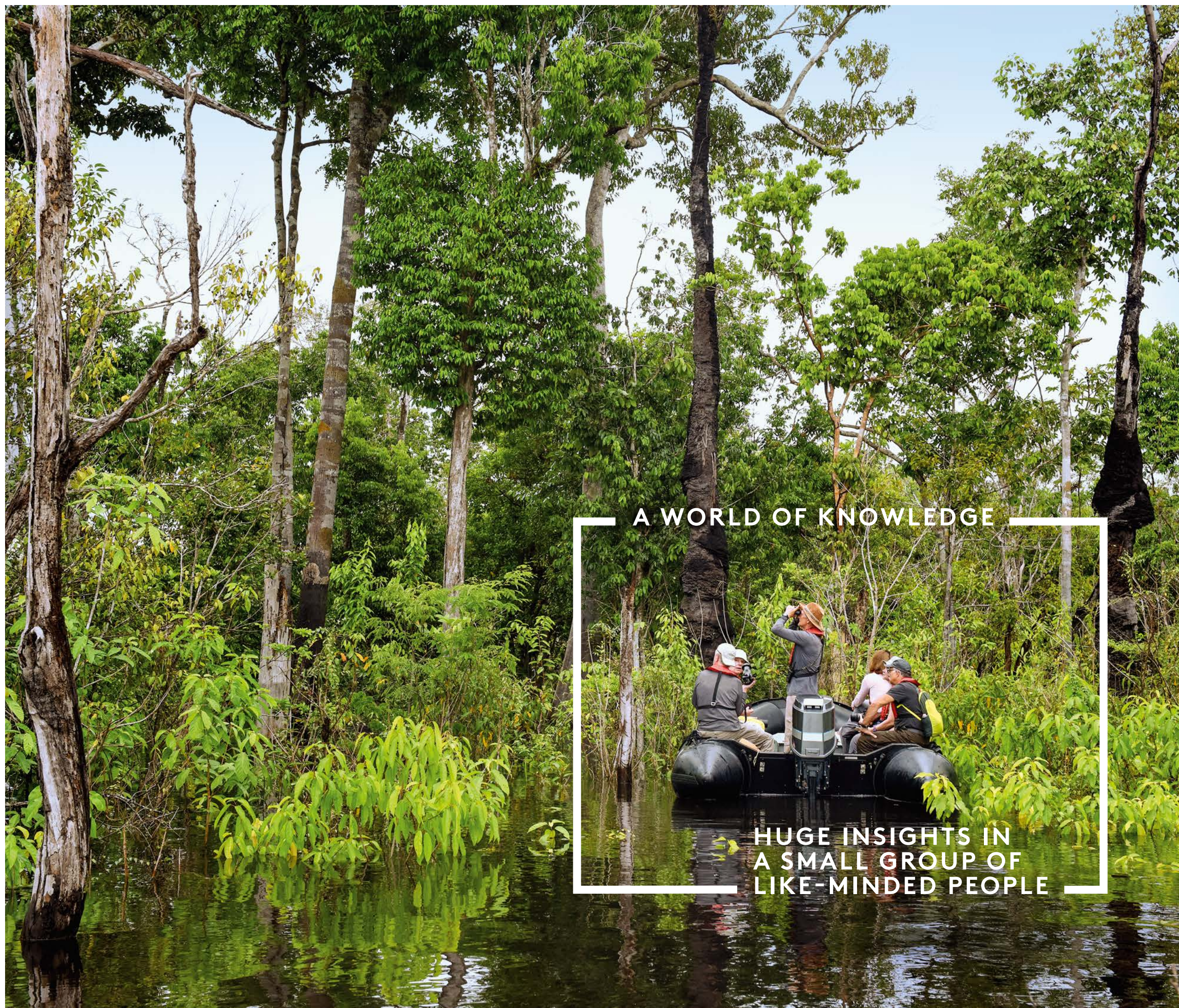
Unforgettable – kayak tours and camping in the Antarctic. Information and prices can be found here:  
[www.hl-cruises.com/camping-antarctica](http://www.hl-cruises.com/camping-antarctica)  
[www.hl-cruises.com/kayak](http://www.hl-cruises.com/kayak)







The more we understand nature and the animal kingdom, the more aware we are of how sensitive these treasures are and how much we need to protect them. Every expedition with Hapag-Lloyd Cruises provides non-stop opportunities to gain new knowledge of the wonders of the world. You decide for yourself what, how much and when you want to learn. The state-of-the-art HANSEATIC inspiration acts as your expedition base, research station and place to study. An experienced team of experts enhances each cruise with specialist knowledge and presentations, while pointing out those special sights that are beyond the reach of other travellers. On your expedition, you'll discover exceptional marvels for yourself, shed light on what you see and make it your own. Each individual moment reveals its own vivid insights – and together they will create a new, lasting perspective.



A WORLD OF KNOWLEDGE

HUGE INSIGHTS IN  
A SMALL GROUP OF  
LIKE-MINDED PEOPLE





## Teams of top-class experts on every cruise

### Come closer to the **secrets**

Satisfy your hunger for adventure, quench your thirst for knowledge. Each cruise is accompanied by a team of up to 16 experts with different specialisations. Biologists, glaciologists, historians and geologists will share their wealth of knowledge –

bringing it to life with vivid descriptions rather than an overly academic approach. They will share fascinating background information in the Zodiacs and ashore, and explain complex links and scientific research with “living” examples. When questions arise about

nature and culture, our experts provide answers in engaging presentations and personal discussions. They will enrich your visits ashore with so-called precaps and recaps. Not only will you enjoy spectacular views, you will also gain profound insights.



#### See more, understand more

When you travel with our experts, you travel with real authorities in their respective fields who have researched and published articles on the topics of the cruise and have travelled extensively in the region.

For 10- to 17-year-olds:  
**YOUNG EXPLORERS  
ON BOARD.**



Hiking on extinct volcanoes, following tracks in the wilderness and Zodiac rides through the ice, enriched with age-appropriate talks and fun, informative workshops: the proven expedition concept from Hapag-Lloyd Cruises turns every day of the holiday into an adventure for young people aged 10 to 17. Destinations such as the North Sea and the Baltic Sea, Spitsbergen, Iceland and Greenland become an experience for the whole family (see pages 82, 86, and 92).

For more information, visit:  
[www.hl-cruises.com/young-explorers](http://www.hl-cruises.com/young-explorers)  
For prices, see the price insert on page 10.





#### An educational expedition

On board, travel experiences are enhanced with scientific content – via interactive multimedia means, including binoculars for captivating details, or through specialist literature available in the extensive on-board library.



## Plenty of space for lectures and self-study Like a **university on the ocean**

**A**mong today's most interesting places to study: our ship as a floating centre of research. The Ocean Academy is your state-of-the-art Knowledge Studio. With the digital Study Poster or at the Study Wall, a touchscreen wall around 6 m (20 ft) wide, you can enhance your experiences with digital content from scientists and journalists – including the GEOMAR Helmholtz Centre for Ocean Research in Kiel/Germany.

Topics range from polar and marine research to flora and fauna, geology, astronomy, ethnology, geography, technology and society. Sit back in a Study Seat with a swivel touchscreen and expand your horizons. Or head to the HanseAtrium, the multifunctional lounge. During the day, listen to expert presentations and pre-caps and recaps for your excursions as state-of-the-art LED walls open up new visual horizons. In the evenings, the room is trans-

formed into an atmospheric bar, while the illuminated ceiling creates imaginary underwater worlds or starry night skies. Discuss your latest discoveries and relax as you look back on your "day of study".





A large background photograph shows a man and a woman smiling and looking at each other in a social setting, likely a ship's bar. The man has grey hair and is wearing a grey blazer over a white t-shirt. The woman has dark curly hair and is wearing a light-colored blouse. In the background, a crew member with a beard is partially visible, smiling. The scene is warmly lit with blue and orange tones.

REAL HAPPINESS

SET SAIL FOR NEW  
SHORES AND FIND  
YOUR TRUE SELF



Look forward to a fulfilling world of discovery that will surprise you every day on board: our service. The exclusive details come together to create an experience that is second to none, with a crew of 175 looking after a maximum of 230 guests. Using their top-class training and experience, the teams will take care of your welfare and comfort with their warmth, enthusiasm and attention to detail. In just a short time, they'll have learnt your name as well as your individual preferences and will take care of all your needs – big or small – with attentiveness, understanding and discretion. Your expedition experiences will just get better and better, for example when the crew serves hot punch as you admire the breathtaking scenery of Spitsbergen. These little extra touches create unforgettable feel-good moments.



Fantastic views to whet your appetite

## Satisfy your hunger for adventure

They say that you eat with your eyes first, which is why we serve up nature and cuisine together on our state-of-the-art expedition ship. After all, you have to look beyond your own personal horizon in order to discover new things. As you dine, your gaze will be drawn into the distance

again and again. Have breakfast under an open sky, or enjoy a juicy steak cooked to perfection on the large outdoor barbecue – garnished with breathtaking panoramic views in the Lido Restaurant. A varied buffet will vie for attention with the facets of the coastlines drifting by.

Your crew ashore also uses nature as an appetiser for special creations. A barbecue on a secluded beach, a reception surrounded by glistening ice or refreshing drinks while exploring the tropics will satisfy your hunger for adventure, thirst for knowledge and culinary wishes perfectly.



### Unforgettable memories

Where the most spectacular regions in the world leave nothing more to be desired, the crew creates a truly personal feeling of well-being with exclusive moments on every expedition.







Indulge in a unique atmosphere

# A sense of discovery for your taste buds

The cuisine on board is just as exceptional as the destinations you'll visit. In the HANSEATIC Restaurant, the main restaurant, we will indulge your senses whatever the time of day – at the breakfast buffet, lunch or dinner a la carte, with flexible mealtimes and free

choice of seating. Wherever your ship drops anchor, our top chefs will look to local specialities and send your taste buds on a global tour of discovery. The speciality restaurant is an excellent option for the evening. Visit the Nikkei restaurant and encounter exquisite Japanese crea-

tions and Peru's modern, fashionable cooking – a world first on the high seas. The HANSEATIC inspiration will bring the day to a perfect end with superbly equipped bars in the Observation Lounge and HanseAtrium. "On the rocks" will gain a whole new meaning if icebergs drift by.



HANSEATIC RESTAURANT  
The main restaurant offers culinary delights from breakfast to dinner a la carte, with different menus every day.



SPECIALITY RESTAURANT NIKKEI  
Exquisite Japanese creations and Peru's modern, fashionable cooking unite in a delightful ambience.



OBSERVATION LOUNGE  
Lean back and enjoy a dream panorama with full-glass window and a 180-degree view during tea/ coffee time or have a drink from the bar.







#### Body & soul

A wide range of courses – on deck (weather permitting) or in the fitness room – will revive your spirit and relieve tension.



#### Oases on the ocean

The Finnish sauna looking out over the ocean, steam sauna, ice fountain and relaxation room promise plenty of room to unwind, while the spacious pool area (flexible canopy) with water loungers and whirlpool provides lots of space to relax in the fresh air.



#### The depths of relaxation

Pampering programme with deep-tissue massages, exclusive beauty treatments and hairdresser (bookable separately).

## Chart a course for well-being Your inner compass points to **me time**

Nature is a source of inspiration and comfort, which is why our OCEAN SPA offers enriching contact with the outside world. From the vast ocean view to colours and forms that reflect unspoilt landscapes. Harmonious design, light-filled rooms. We use

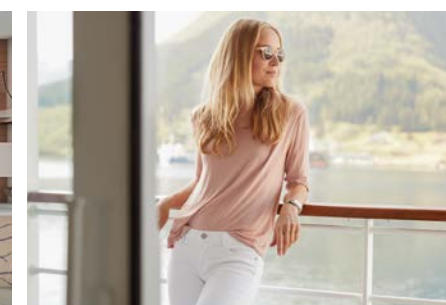
exclusive, certified natural cosmetics for our beauty treatments and rejuvenating massages. The Sports Club (around 100 m<sup>2</sup>/1,076 ft<sup>2</sup>) always has its finger on the pulse with state-of-the-art equipment and a course room. Our fitness coach offers a wide

range of activities and will be happy to provide you with targeted guidance during personal training sessions (the latter subject to a surcharge). With views of glittering icebergs or lush rainforests, you will see how revitalising and relaxing expeditions can be.





As the ship merges with nature, spectacular landscapes glide past the large panoramic windows or the balcony opens up a wonderful feeling of freedom, you'll continue to experience nature harmoniously in the cabins and suites. The interiors of the expedition ship have been designed by probably the world's best interior designer: nature. Inspiration for the unique design was taken from the natural world, which means that the expedition experiences from the regions visited are also reflected in the ship's interior. Special highlights, a sense of vastness, the play of the waves – plenty of space for interpretations and, above all, for well-being. Hapag-Lloyd Cruises aims to skilfully blend the outside with the inside – for a naturally varied and inspiring cruise experience.



## Cabins

# Nature-inspired interior design

Unique design, inspired by nature: curved lines, natural colours and premium materials – for pure relaxation. The HANSEATIC inspiration has four cabin types. The fixtures and fittings are identical, only the window/balcony area differs.

### Spacious living

- Outside Cabin (large window), approx. 22 m<sup>2</sup> (237 ft<sup>2</sup>)
- Panoramic Cabin (large floor-to-ceiling window), approx. 21 m<sup>2</sup> (226 ft<sup>2</sup>)
- French Balcony Cabin approx. 21/23 m<sup>2</sup> (226/248 ft<sup>2</sup>)
- Balcony Cabin approx. 27 m<sup>2</sup> (291 ft<sup>2</sup>), including private balcony, approx. 5 m<sup>2</sup> (54 ft<sup>2</sup>)

### Details

- Heated wall in bathroom (e.g. for towels and wet parkas)
- Rain shower
- Free mini bar (soft drinks)
- Coffee machine
- Separable beds

- Binoculars
- Nordic Walking poles
- 24-hour cabin service
- Extensive infotainment with live broadcast and recordings of expert presentations, forward-view camera, navigation chart, films and much more

The floor plan is only an example and sizes given are approximate.





## Junior Suites

# Space for your senses

In one of the 14 Junior Suites (42 m<sup>2</sup>/452 ft<sup>2</sup>) including private balcony (6 m<sup>2</sup>/65 ft<sup>2</sup>), enjoy inspiring, spacious design and ultimate comfort like a gentle ocean breeze.

### Details

- Separate living and sleeping areas
- Separate dining area
- Sleeping area with panoramic view
- Separable beds
- TV in living and sleeping areas
- Bathroom with two sinks and rain shower
- Steam sauna in shower area
- Heated wall in bathroom (e.g. for towels and wet parkas)
- Butler service, 24-hour cabin service
- Table reservation in the HANSEATIC Restaurant
- Binoculars
- Nordic Walking poles
- Free mini bar
- Coffee machine
- Extensive infotainment with live broadcast and recordings of expert presentations, forward-view camera, navigation chart, films and much more

The floor plan is only an example and sizes given are approximate.



## Grand Suites

# Exclusive expedition base

Each of the four Grand Suites is a comfortable home port, oasis and panoramic deck all in one. Across 71 m<sup>2</sup> (764 ft<sup>2</sup>), including private veranda (16 m<sup>2</sup>/172 ft<sup>2</sup>), they offer everything you require for a seriously stylish expedition.

### Details

- Veranda with space heaters
- Separate living and sleeping areas
- Separate dining area
- Sleeping area with panoramic view
- Separable beds
- TV in living and sleeping areas
- Daylight bathroom with two sinks, free-standing bath, rain shower and veranda access
- Steam sauna in shower area
- Heated wall in bathroom (e.g. for towels and wet parkas)
- Separate toilet
- Butler service, 24-hour cabin service
- Table reservation in the HANSEATIC Restaurant
- Free choice of Zodiac group
- Binoculars
- Nordic Walking poles
- Free mini bar
- Coffee machine
- Extensive infotainment with live broadcast and recordings of expert presentations, forward-view camera, navigation chart, films and much more

The floor plan is only an example and sizes given are approximate.



## Fascination of the Antarctic 2023/2024

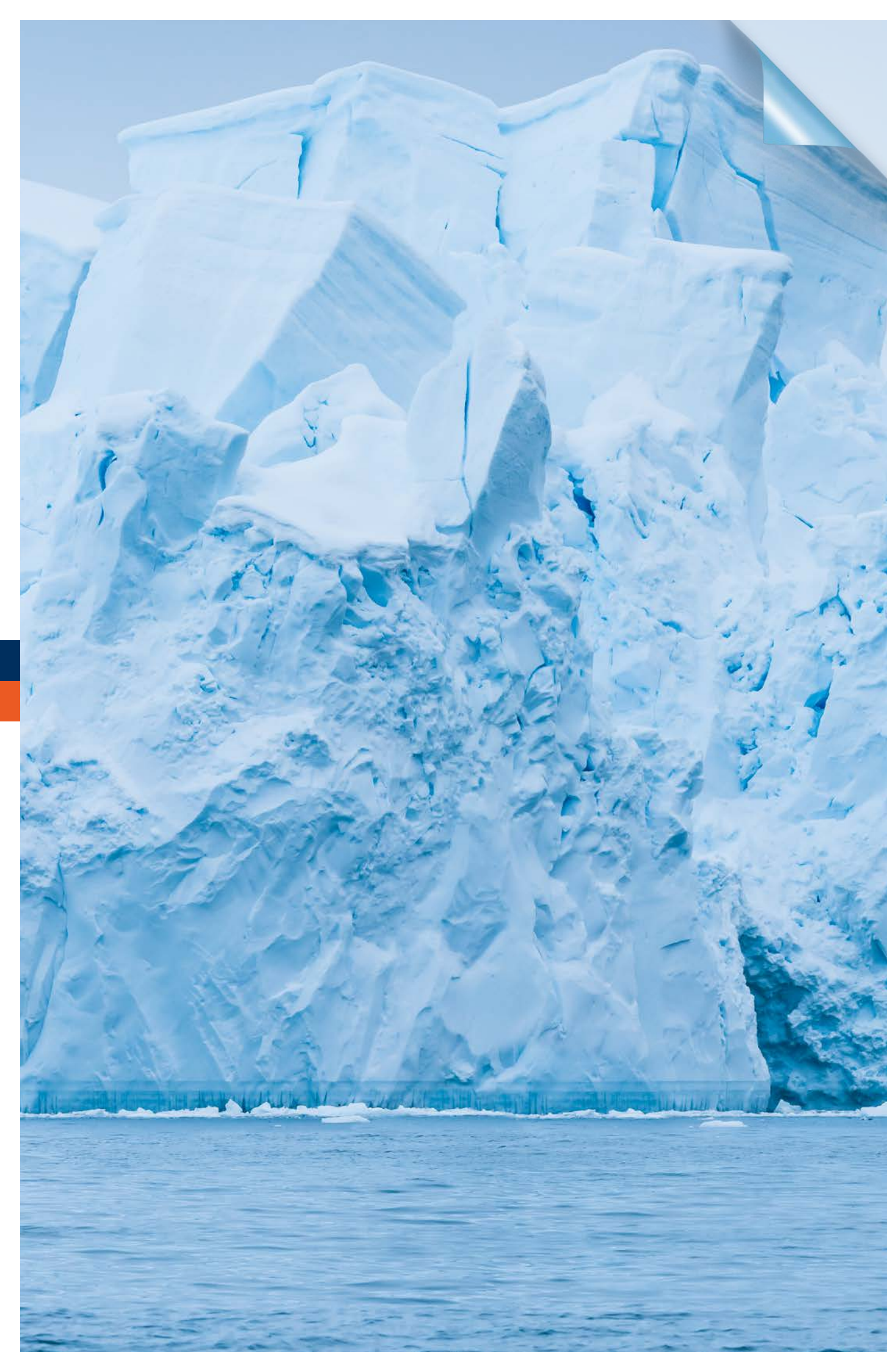
Experience the cruise of a lifetime where the extremes of nature determine the course and spontaneity is imperative for the crew. A desert of snow and ice. Icebergs sculpted in the strangest shapes and most beautiful shades of blue. Awesome expanses and mysterious silence. Here our expedition ship and its manoeuvrable Zodiacs find safe routes to mysterious regions and the diverse animal kingdom of the sixth continent. The hardships of historic explorers have given way to the modern comforts on board, but the drama and pioneering spirit remain unbroken. Only the arrival and departure dates are fixed – everything else is expedition in its purest sense.

ANTARCTICA



ANTARCTICA









## FALKLAND ISLANDS

Stanley

## SOUTH AMERICA

Ushuaia

Beagle Channel  
Cape Horn

## SOUTH GEORGIA

Grytviken

Drake Passage

## SOUTH ORKNEY ISLANDS

Elephant Island

## SOUTH SHETLAND ISLANDS

Deception Island

Cuerville Island

Neko Harbor

Paradise Bay

Lemaire Channel

Detaille Island

Horseshoe Island

Antarctic Sound

Paulet Island

Brown Bluff

Antarctic Circle

## WEDDELL SEA

## ANTARCTIC PENINSULA





## The extraordinary every day

Each Antarctic expedition offers magnificent experiences from morning to night. What might an exciting day look like for you? And what makes our expeditions so special?

Your morning starts by invigorating your senses. You stand on deck and breathe in the indescribably clear air. Gazing out over the vast, spellbinding scenery, you get an impression of the first early Zodiac landing that lies ahead. After leaving the ship, you venture into a natural backdrop of snow-capped mountains and steep glaciers – a special feeling of reverence and amazement accompanying every turn. The robust expedition rubber boats pass by an iceberg at a respectful distance, just as a group of penguins is getting ready to jump from the sheet of ice into the water. Which one will be the first to take the leap? And what type of penguins are these captivating creatures? How lucky that you can satisfy your hunger for adventure and your thirst for knowledge at the same time – the experienced experts at your

side will broaden your horizons and teach you how to distinguish between the various species from their little tell-tale features. Back on board, you spot a majestic albatross that follows the ship for a while. The experts' lectures also fill you with inspiration. Various topics relating to nature and the animal kingdom, history and science enrich your discoveries, whether exploring Shackleton and his battle to survive in the ice, the glaciology and geology of the Antarctic, or the latest findings about how the sensitive ecosystem affects the planet's weather and magnetic field.

In the afternoon, the sounds of the ice crunching and cracking accompany the expedition ship as your adventure continues and mighty sheets of ice are pushed aside. The deck is your best vantage point for

watching this world of sparkling blue and white. The captain and crew react flexibly to the ice conditions and choose a route with less ice to reach a nearby island, where the Zodiacs take you ashore again. Kitted out with snowshoes, you hike with the experts to a viewpoint where you are struck by the uniqueness of the southern polar region. Is there any more authentic place to learn about the deeds of legendary pioneers? As enormous mountains rise up before you, you feel a growing, deep sense of how small humans are compared to this natural world. Even once you're back on board, you can't take your eyes away from the icebergs drifting proudly in the waters. You reflect on your experiences into the evening with a small group of like-minded travellers and are filled with endless anticipation for what tomorrow will bring.

### WHY CHOOSE A HAPAG-LLOYD CRUISES EXPEDITION?

- Discover spectacular destinations, some away from typical routes
- Experience natural wonders in a small group
- Feel the thrill of expeditions on numerous Zodiac rides and landings
- Gain fascinating background knowledge from a large team of experts
- Enjoy safety at the ends of the earth thanks to the highest ice class for passenger ships (PC 6)
- Get up-close to nature: more open deck space than ever before







## Active masterclasses

Respectful discovery and fascinating knowledge come together in a unique symbiosis on your many adventures with teams of experts.

The Antarctic invites active exploration and there are various opportunities to enjoy this on each day of your expedition. Zodiac rides off glaciers and vast coastlines are just the “tip of the iceberg”, bringing views from an array of different perspectives. Satisfy your thirst for adventure with the many landings by Zodiac. These take you ashore in small groups, where you can see an absolutely unbelievable number of penguins or visit beaches with elephant seals, for instance. It is a humbling experience to watch them from a respectful distance. Explore the Antarctic from ever-changing angles on hikes with your experts. For instance, you’ll trace the footsteps of historic explorers before your route

takes you along the moraines of a majestic glacier and then rewards you with spellbinding views atop the hills. Or embark on a snowshoe hike and get a sense for yourself of what efforts the bygone pioneers went to in order to explore this wonderland. Delve deep into the polar world as you paddle along bizarre coastlines by kayak\* and watch penguins darting through the water. On selected cruises, you can even spend a night ashore in tents\* and feel like a polar explorer with an adventure from evening until the morning, beginning with a thrilling Zodiac landing before pitching your own tent and spending the night in a world of ice. Experience something exceptional and learn something new from the great expertise

and specialist knowledge shared by the team of experts who are always at your side. They will explain more about what you have seen and be on hand to answer your questions in the Zodiacs too. What causes the weather phenomenon known as a white-out, where the ground and sky merge into an icy nothingness? Why do icebergs glow green and how do they provide nutrients for the algae? How do trapped air bubbles 3,000 m (9,843 ft) below the surface help us to understand the climate? Whether ashore or on board, during lectures or in the Ocean Academy, our expeditions to the Antarctic offer activities, experiences and knowledge that you will remember forever.



### ENDLESS POSSIBILITIES

- Numerous Zodiac rides and landings
- Fascinating presentations by the team of experts along with precaps and recaps (on-board preparation and follow-up sessions)
- Camping in the Antarctic\* – find out more at [www.hl-cruises.com/camping-antarctica](http://www.hl-cruises.com/camping-antarctica)
- Trace footsteps in the snow: visit the places where polar history was made
- Kayak tours past stunning bays\* – find out more at [www.hl-cruises.com/kayak](http://www.hl-cruises.com/kayak)
- Expeditions for the active: discover spectacular landscapes on snowshoe hikes

\*You can book the camping and kayak experiences directly on board. These optional activities are not included in the cruise price.



# EACH REGION IS A WORLD OF ADVENTURE



## SOUTH ORKNEY ISLANDS

The South Orkney Islands are a lonely, glaciated world of icy wilderness in the Scotia Sea. They are home to chinstrap and Adelie penguins, which can be spotted here. Find out how the polar researchers at the Argentinian Orcadas Station live when you visit by Zodiac, weather permitting (subject to authorisation). With luck, you'll spot icebergs drifting off the rugged coast of Signy Island.



## SOUTH GEORGIA

As soon as this subantarctic animal paradise comes into view, mighty glaciers and fjords will captivate you. Bustling colonies of king penguins carpet the coasts and steep slopes. Hundreds of thousands of animals share the island with elephant seals and fur seals. After landing on one of the black shores of South Georgia, your adventures will be filled with bellowing fur seals and squabbling penguins. You'll keep returning to the footsteps of Sir Ernest Shackleton, who found his final resting place on South Georgia in 1922.



## FALKLAND ISLANDS

A dream destination for birdwatchers. The British Overseas Territory is home to over 60 bird species such as the endemic Falkland pipit, as well as striated caracaras, Cape petrels and king cormorants. Black-browed albatrosses and wandering albatrosses make skilful use of the wind to sail through the air without flapping their wings. Aside from the birdlife, there are also impressive traces of an eventful history to see. The small island capital Stanley will welcome you with Victorian houses and British charm.



## SOUTH SHETLAND ISLANDS AND ANTARCTIC PENINSULA

The South Shetland Islands form a long chain in the ocean. The legendary Elephant Island is where Shackleton's team held out for months. Jagged crags loom fiercely on the horizon and the evening sun casts a delicate pink glow over the snowfields. Only small expedition ships are able to sail into the flooded caldera of Deception Island. Accompanied by the creaking of the ice, venture onwards to the Antarctic Peninsula. Majestic glaciers and gigantic icebergs glint in Paradise Bay. Another impressive sight awaits in the Lemaire Channel, where mountains up to 1,000 m (3,281 ft) high line the spectacular shipping passage. Look forward to some thrilling moments.



## ANTARCTIC CIRCLE

The further south your expedition goes, the harsher and icier the endless world of white appears. The excitement on board will mount as you approach the crossing of the Antarctic Circle. How far can the ship advance? Thick ice fields are a common sight here, the glaciers seem more dominant, and more icebergs drift on the water, creating a very special feeling of pioneering adventure.



## ANTARCTIC SOUND AND WEDDELL SEA

A mystical icy world lies in the Antarctic Sound and at the tip of the Antarctic Peninsula. There are new scenes to feast your eyes on and catch on camera every day from the deck and Zodiacs. The numerous tabular icebergs are particularly spectacular and will astound you with their size, shape and colour. In one of the world's most remote and most challenging expedition areas, the tuya volcano (flat-topped volcano) Brown Bluff makes an amazing sight in clear weather, for example. Its brown tuff cliffs towering over 700 m (2,297 ft) tall are a formidable sight rising between two mighty glaciers.







### LEGIONS OF PENGUINS

They are extremely agile underwater hunters with streamlined bodies and an appetite for krill, fish and squid, but not all penguins are alike. During your expedition, the team of experts will help you to identify the species from their features. When it comes to king penguins, it is even difficult to distinguish between the males and females, with the only differences being their beaks and calls. As you come face to face with hundreds of thousands of them on South Georgia, they make a wonderful spectacle and a challenge for your observation skills. When the pack ice breaks in spring, the animals return from the sea to last year's breeding ground. In Antarctica itself, you can find Adelie, chinstrap and gentoo penguins – perhaps filing along “penguin highways” or sliding down hills in the snow on their stomachs. As you watch quietly, the soundscape created by their countless throats welcomes you to the penguin world.



### ANIMAL CALENDAR

#### NOVEMBER

- Return of the whales
- Mating season, nest-building and egg-laying of the Adelie, rockhopper, macaroni, king and chinstrap penguins
- Pupping season of the Weddell seal, leopard seal and South American fur seal

#### DECEMBER

- Egg-laying and breeding season of the wandering albatross
- Pupping season of the Antarctic fur seal
- Breeding and rearing season of the Adelie, chinstrap, macaroni and gentoo penguins

#### JANUARY

- Rearing season of the Antarctic fur seal
- Breeding season of the wandering albatross and king penguin
- Breeding and rearing season of the Adelie, chinstrap, macaroni and gentoo penguins

#### FEBRUARY

- Breeding season of the wandering albatross and cape petrel
- Rearing season of the Antarctic fur seal
- Breeding and rearing season of the king, Adelie, chinstrap and macaroni penguins

#### MARCH

- Rearing season of the wandering albatross
- Rearing season of the king, macaroni and gentoo penguins

These monthly lists and wildlife sightings are based on past experience and may vary from year to year.



### LOUD-VOICED SEALS

The seals will underscore the special experience of your expedition – in the open sea, on ice floes and on beaches. You'll see – and hear – the great diversity of these creatures in the southern polar region. Ashore, elephant seals weighing several tonnes court the females like heroic tenors in an open-air opera. Baby seals on the beach call loudly for their mothers. Meanwhile, the Weddell seals communicate with ethereal underwater sounds in the ultrasonic range.



### MAJESTIC WHALES

An enormous body glides gracefully through the water, a deep burst of breath breaking the silence of the polar world. The fluke rises and falls as if in slow motion, but this is no dream – it is an up-close experience of nature that, with a little luck, will be part of your expedition. There is a chance of seeing blue whales, sperm whales, humpback whales and orcas. When the impressive marine mammals surface nearby, the captain will spontaneously change course and allow you to observe them thoroughly from a respectful distance.



### DIVERSE SEABIRDS

There are around 275 species of seabird living in the southern polar waters, including king cormorants, petrels and blue-eyed shags. They spend their lives almost entirely on the open sea, where they find food and also sleep. They only come ashore for mating, nest-building and breeding. Birds such as the wandering albatross often follow the ship curiously. With a wingspan of over 3 m (9.8 ft), all they need is the wind to sail for kilometres with barely a flap of their wings.





EXTRA FOR  
SINGLE TRAVELLERS  
ON ALL ANTARCTIC  
CRUISES

The surcharge for single  
travellers is only 20 %  
(Cat. 1 – 8).



Grand expedition route  
From Ushuaia to Ushuaia  
SPRING AWAKENS IN THE ICY SOUTH

1 Dec – 17 Dec 202316 daysINS2324		
		Individual travel arrangements to Buenos Aires/Argentina
Fri	1 Dec	Charter flight to Ushuaia/Argentina, departure 18.00 hrs
Sat	2 Dec	Relaxation at sea
Sun	3 Dec	Stanley/Falkland Islands ⚓
Mon	4–5 Dec	Relaxation at sea
Wed	6–7 Dec	South Georgia ⚓
Fri	8 Dec	Relaxation at sea
Sat	9–14 Dec	South Shetland Islands ⚓, Weddell Sea ⚓, Antarctic Peninsula ⚓
Fri	15–16 Dec	Sailing through the Drake Passage
Sun	17 Dec	Ushuaia/Argentina, arrival 6.00 hrs Charter flight to Buenos Aires/Argentina Individual travel arrangements from Buenos Aires

⚓ = at anchor For prices, see the price insert from page 12.

Grand expedition route  
From Ushuaia to Ushuaia  
FESTIVE DAYS OF BIODIVERSITY

17 Dec 2023 – 4 Jan 202418 daysINS2400		
4 Jan – 22 Jan 202418 daysINS2401		
22 Jan – 9 Feb 202418 daysINS2402		
		Individual travel arrangements to Buenos Aires/Argentina
Day 0		Charter flight to Ushuaia/Argentina, departure 18.00 hrs
Day 1		Relaxation at sea
Day 2–3		Falkland Islands ⚓
Day 4–5		Relaxation at sea
Day 6–8		South Georgia ⚓
Day 9		Relaxation at sea
Day 10–15		South Orkney Islands ⚓, South Shetland Islands ⚓, Weddell Sea ⚓, Antarctic Peninsula ⚓
Day 16–17		Sailing through the Drake Passage
Day 18		Ushuaia/Argentina, arrival 6.00 hrs Charter flight to Buenos Aires/Argentina Individual travel arrangements from Buenos Aires

⚓ = at anchor For prices, see the price insert from page 13.

Grand expedition route  
From Ushuaia to Montevideo  
MOMENTS TO REMEMBER FOREVER

9 Feb – 28 Feb 202419 daysINS2403		
		Individual travel arrangements to Buenos Aires/Argentina
Fri	9 Feb	Charter flight to Ushuaia/Argentina, departure 18.00 hrs
Sat	10 Feb	Sailing through the Drake Passage
Sun	11–17 Feb	South Shetland Islands ⚓, Antarctic Peninsula ⚓, Weddell Sea ⚓, South Orkney Islands ⚓
Sun	18 Feb	Relaxation at sea
Mon	19–20 Feb	South Georgia ⚓
Wed	21–22 Feb	Relaxation at sea
Fri	23–24 Feb	Falkland Islands ⚓
Sun	25–27 Feb	Relaxation at sea
Wed	28 Feb	Montevideo/Uruguay, arrival 7.00 hrs Individual travel arrangements from Montevideo

⚓ = at anchor For prices, see the price insert from page 13.

HIGHLIGHTS

- Best chances to see many different penguin species – including king and Adelie penguins – as well as albatrosses
- Intense experiences of the ice-blue wonderland during hikes with experts
- South Georgia: watch thousands of fur seals with their young
- Experience fascinating natural spectacles up-close, such as the penguin mating season
- Illuminating and fascinating: Zodiac rides and landings with experts
- Camping in the Antarctic\*

HIGHLIGHTS

- The Falkland Islands, South Georgia and the Antarctic Peninsula – the grand route through the southern polar regions
- Watch various species of penguin, seal, whale and seabird in their natural habitat
- Illuminating and fascinating: experts accompany hikes and Zodiac rides into the ice
- Fantastic ship passages between mountains and glaciers
- The glittering, fascinating Antarctic: majestic tabular icebergs and shelf ice in the Weddell Sea
- Camping in the Antarctic\* (except INS2400)

HIGHLIGHTS

- Grand route through the southern polar regions – the Antarctic Peninsula, South Georgia and the Falkland Islands
- Good opportunities for whale watching
- Watch various penguin, seal and seabird species in their natural habitat
- Illuminating and fascinating: experts accompany hikes and Zodiac rides into the ice
- Fantastic ship passages between mountains and glaciers
- The fascinating Lemaire Channel with glaciers, icebergs and peaks up to 1,000 m (3,281 ft) high

\*You can book the camping experience directly on board. This optional activity is not included in the cruise price.  
For more information, visit [www.hl-cruises.com/camping-antarctica](http://www.hl-cruises.com/camping-antarctica)

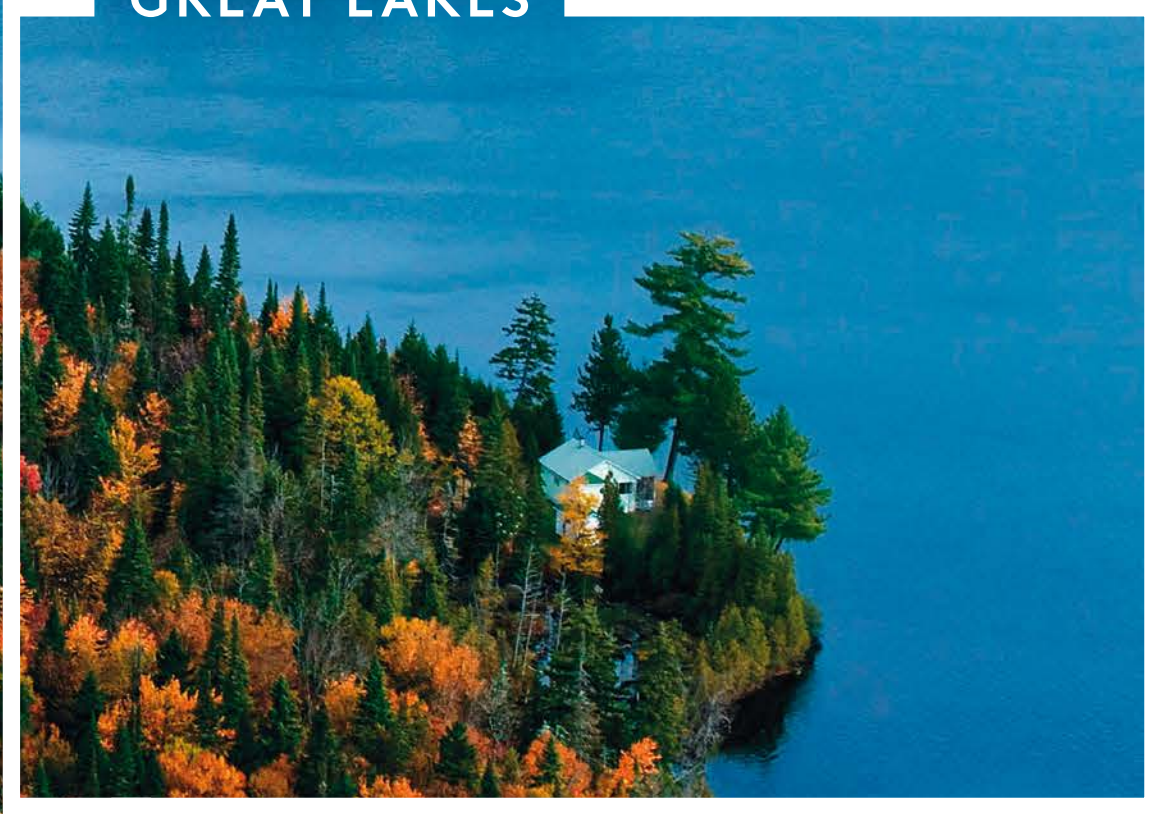
The itinerary depends on official approval, weather and ice conditions.  
The natural experiences and wildlife sightings described on pages 54–57 are possibilities on these expeditions and are not guaranteed.







GREAT LAKES







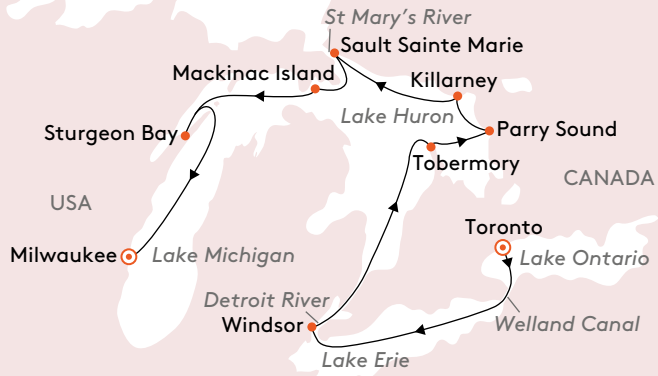
Great Lakes · 27 Sep – 8 Oct 2023 · 11 days

# LAKES AWASH WITH THE AMERICAN DREAM

Between the Atlantic and Pacific, there is another third “ocean” that shapes the North American landscape: the natural wonder and lifeline of the Great Lakes. With a total area of around 244,000 km<sup>2</sup> (94,209 mi.<sup>2</sup>), they are a superb dream destination for explorers. Each lock opens up a new chapter in a book of beautiful pictures that have come to life, painted in the hues of an Indian summer with reams of wilderness and culture. Most ships are unable to pass through the locks, but the HANSEATIC inspiration masters this nautical feat with flying colours thanks to its retractable bridge wings. The inspiration Walk and the many open deck spaces give you thrilling views every day – such as during the morning journey on the Detroit River. Leaving Windsor, you can enjoy an unobstructed view of the skyline of the former “Motor City” before heading out to explore the many facets of Detroit\*. Your experts on board will tell you all about the cruise destinations, sharing knowledge that is just as varied as the shores that you will visit. Brimming with fascinating background information, you’ll see nature with new eyes – for instance when you cruise across Lake Huron to the fishing town of Tobermory on Georgian Bay. Small bays, deep-green forests and the limestone coast will leave you with lasting memories of exploring the Bruce Trail at your own pace. The small HANSEATIC inspiration is in its element here as it charts a course through a scenic labyrinth of water to reach Parry Sound. Its name pays tribute to the British polar explorer William E. Parry. Explore the town and the nearby lake shore on the marine walking trails and look forward to a boat trip of the Thirty Thousand Islands\*. The varied

archipelago scenery here is filled with islands emerging from the water, narrow channels and imposing cliffs. Alternatively, you can turn your focus to unforgettable panoramic pictures in Killbear Provincial Park\*, where pink granite banks and autumnal forest blend into constantly shifting compositions. The islands around Killarney are a crown jewel in the wild nature and a paradise for nature lovers and outdoor enthusiasts. Just imagine how overwhelmed the first settlers and trappers must have felt here by the vastness and the sense of freedom. Get a feel for it yourself as you cruise on Lake Huron.

Your route continues to Sault Sainte Marie, which lies right on the border between Canada and the USA. Explore the city that spans two nations with a walk to the historic locks or the bushplane museum, surrounded by mesmerising nature. Mackinac Island is considered as one of the most beautiful islands in the USA. Discover Victorian villas and the Grand Hotel dating back to the 19th century on foot, by bicycle and on a carriage ride. The Door Peninsula on the edge of Lake Michigan is yet another fantastic gem waiting to be discovered. Water sports such as kayaking have just as rich a history here as the shipbuilding centre of Door County. You’ll sense the idyllic charm as you start making your way to Sturgeon Bay by tender boat. From here, set your sights on the enchanting Door Peninsula\* with its historic brick lighthouses, small fishing villages and expansive fruit and wine-growing regions. Brewing was once the focus of Milwaukee, but museums and the music scene now provide creative highlights. Discover the



influence of the German immigrants of times gone by and works by many European painters on a city tour with a visit to the Milwaukee Art Museum\*. Milwaukee has honoured a brand that is intrinsically linked to the American way of life with the Harley-Davidson Museum\*. The pursuit of happiness is a theme in this green heart of North America, a place undeniably “Born to Be Wild”. There is also the option of a visit to Chicago\* with its interesting mix of huge skyscrapers, diverse architecture and beaches and parks right on the shore of Lake Michigan. Your memories of the Great Lakes are sure to be just as filled with emotion as the soul and blues music that is typical of the city – and will live on in your spirit of discovery.

## From Toronto to Milwaukee

INS2319

Wed	27 Sep	Individual travel arrangements to Toronto Toronto/Lake Ontario/Canada Overnight stay on board
Thu	28 Sep	Toronto, departure 1.00 hrs
Fri	29 Sep	Windsor/Detroit River/Canada, from 7.30 to 19.00 hrs
Sat	30 Sep	Tobermory/Lake Huron/Canada, from 13.00 to 19.00 hrs ⚓
Sun	1 Oct	Parry Sound/Canada, from 8.30 to 17.30 hrs
Mon	2 Oct	Killarney/Canada, from 7.00 to 14.00 hrs ⚓ Cruise on Lake Huron
Tue	3 Oct	Sault Sainte Marie/St Mary’s River/Canada, from 7.00 to 12.00 hrs
Wed	4 Oct	Mackinac Island/Lake Huron/USA, from 8.00 to 18.00 hrs ⚓
Thu	5 Oct	Sturgeon Bay/Lake Michigan/USA, from 8.00 to 19.00 hrs ⚓
Fri	6 Oct	Relaxation at sea
Sat	7 Oct	Milwaukee/Lake Michigan/USA, arrival 8.00 hrs Overnight stay on board
Sun	8 Oct	Individual travel arrangements from Milwaukee

⚓ = at anchor For prices, see the price insert from page 12.

The itinerary depends on official approval. Please note that the use of Zodiacs is currently not permitted on the Great Lakes.

## HIGHLIGHTS

- Great Lakes and great pioneering spirit – an adventure of vast shores and wild forests
- Experience the locks live on board
- Glowing leaves, kindled souls – with luck, the Indian summer will bring the right weather and nature will transform the country into a sea of colours
- Learn fascinating information about the indigenous people, the First Nations, and the legacy of immigrants
- New dream landscapes every day – with skerries, islands, waterfalls, cliffs and lighthouses



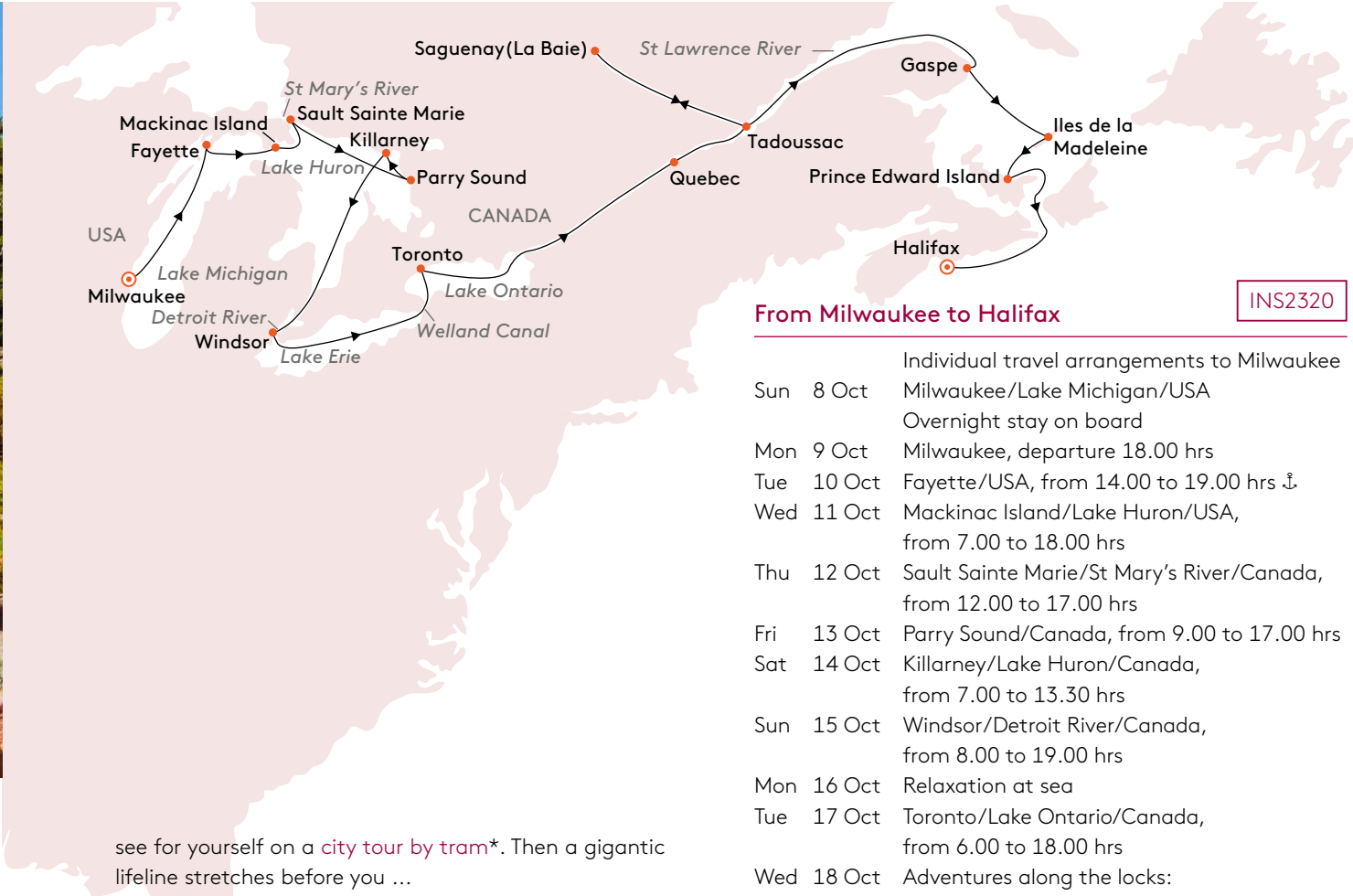




Great Lakes and St Lawrence River  
8 Oct – 26 Oct 2023 · 18 days

## A CONFLUENCE OF WILDERNESS AND HISTORY

The HANSEATIC inspiration brings together the Great Lakes and the mighty river system of North America on one cruise for the first time. This special way of rediscovering the continent starts in **Milwaukee** on Lake Michigan, where many German immigrants settled in the 19th century. Get an impression of the place for yourself on a **city tour with a visit to the Milwaukee Art Museum\***, or opt to explore **Chicago\***. Find out how America's sense of freedom conquered the world on two wheels at the **Harley-Davidson Museum\***. The township of **Fayette** once had one of the region's most productive iron smelters. The historic wooden houses here contrast with the Victorian villas and the fort from the American Revolutionary War on **Mackinac Island**. Take a walk through **Sault Sainte Marie** and explore the museum with fascinating stories of immigrants or marvel at the enormous lock system that separates Canada and the USA here. Whether you explore by kayak, canoe or ship, **Parry Sound** is a paradise for water sports enthusiasts, as a **boat trip of the Thirty Thousand Islands\*** proves. The beautiful composition of blue water, autumnal forests and white granite rock envelops you in a masterpiece of nature in **Killbear Provincial Park\***. **Killarney** is reminiscent of Ireland. Stop and pause as you walk on the "emerald isle" of George Island to fully appreciate the nature and tranquillity. Inspired by this gorgeous landscape, you'll reach **Windsor** on the Detroit River with a brilliant view of the impressive Detroit skyline. **Toronto** reveals how skyscrapers, parks and trendy neighbourhoods can coexist in harmony –



On the **daytime passage through the seven locks on St Lawrence River** you'll be enthralled by this river of life between the Great Lakes and the Atlantic as you experience the thrilling manoeuvres on board. French savoir vivre and Canadian zest for life invite you to explore the historic quarter in **Quebec**. A **city walk with tea at Chateau Frontenac\*** will bring around 400 years of history to life. A trip to **Montmorency Falls and Ile d'Orleans\*** takes you past some of Canada's oldest French settlements and illustrates this region's unique qualities. There is also dramatic nature to be seen on the trip on the **Saguenay River**, framed by mighty mountain landscapes. A **hike in Saguenay Fjord National Park\*** or a **seaplane flight over the fjord\*** will treat you to vast panoramas. At the mouth of the fjord, Canada's oldest settlement, **Tadoussac**, tells the tales of the French settlers, whose traditions also shape **Gaspe**. A **scenic tour of the peninsula and Forillon National Park\*** reveals picturesque bays and rocky coastlines – you can also explore this paradise for amateur ornithologists with an active **hike\***. Between red cliffs and long beaches, **island impressions of the Iles de la Madeleine\*** ensure breathtaking views of the Cape Alight Lighthouse. Enjoy a **taste of the islands\*** with cheese, fish and brewing expertise on a culinary tour. Finally, Charlottetown on **Prince Edward Island** welcomes you to an urban idyll where the sound of horse-drawn carriages echoes through the streets. As your cruise slowly draws to a close, your own American-Canadian dream comes to an end in beautiful natural surroundings.

The itinerary depends on official approval. Please note that the use of Zodiacs is currently not permitted on the Great Lakes.

\*The shore activities are not included in the cruise price and are in the planning stage. Subject to change without notice.

### From Milwaukee to Halifax

INS2320

		Individual travel arrangements to Milwaukee
Sun	8 Oct	Milwaukee/Lake Michigan/USA Overnight stay on board
Mon	9 Oct	Milwaukee, departure 18.00 hrs
Tue	10 Oct	Fayette/USA, from 14.00 to 19.00 hrs ⚓
Wed	11 Oct	Mackinac Island/Lake Huron/USA, from 7.00 to 18.00 hrs
Thu	12 Oct	Sault Sainte Marie/St Mary's River/Canada, from 12.00 to 17.00 hrs
Fri	13 Oct	Parry Sound/Canada, from 9.00 to 17.00 hrs
Sat	14 Oct	Killarney/Lake Huron/Canada, from 7.00 to 13.30 hrs
Sun	15 Oct	Windsor/Detroit River/Canada, from 8.00 to 19.00 hrs
Mon	16 Oct	Relaxation at sea
Tue	17 Oct	Toronto/Lake Ontario/Canada, from 6.00 to 18.00 hrs
Wed	18 Oct	Adventures along the locks: daytime passage through the seven locks of the St Lawrence River
Thu	19 Oct	Quebec/St Lawrence River/Canada, from 8.00 to 18.00 hrs
Fri	20 Oct	Saguenay (La Baie)/Canada, from 8.00 to 14.00 hrs ⚓ Tadoussac/Canada, arrival 20.00 hrs ⚓
Sat	21 Oct	Tadoussac, departure 13.00 hrs ⚓
Sun	22 Oct	Gaspe/Quebec/Canada, from 13.00 to 19.00 hrs ⚓
Mon	23 Oct	Iles de la Madeleine/Quebec/Canada, from 13.30 to 19.00 hrs ⚓
Tue	24 Oct	Prince Edward Island/Canada, from 10.00 to 19.00 hrs
Wed	25 Oct	Relaxation at sea
Thu	26 Oct	Halifax/Nova Scotia/Canada, arrival 7.00 hrs Individual travel arrangements from Halifax

⚓ = at anchor For prices, see the price insert from page 12.

### HIGHLIGHTS

- Premiere for the HANSEATIC inspiration: an ocean in the wilderness and a magnificent river system
- Lock adventure on the St Lawrence River: with its retractable bridge wings, the HANSEATIC inspiration easily masters the nautical masterpieces and the almost 100 m (328 ft) difference in height
- The magic of autumn on coasts and in forests
- "Vive la France" in Canada: Quebec and Tadoussac
- Picturesque places where time seems to have stood still, such as Mackinac Island and Charlottetown

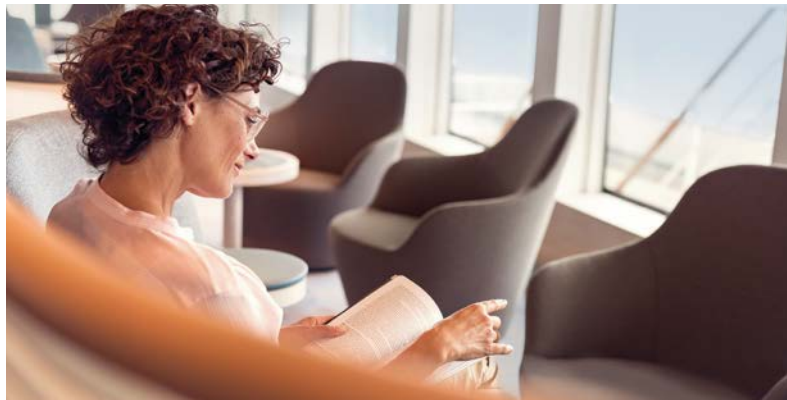




EXTEND & SAVE  
Enjoy relaxed days at sea after  
experiencing the nature of  
North America.

Extension price of just  
**EUR 1,390**  
per person (see inside for details).





26 Oct – 3 Nov 2023 · 8 days · **INS2321**

## FREEDOM AND OCEAN DREAMS

From Halifax/Canada to Colon/Panama

The perfect way to end your Great Lakes and St Lawrence River cruise (INS2320) or set the tone for your Expedition Panama Canal and South America (INS2322, see page 68): enjoy the comfort and unrivalled service of the HANSEATIC inspiration for an extra eight days on the way to Panama. Plenty of scope for culinary discoveries, personal downtime in the spa or your own studies in the Ocean Academy.

- Experience the relaxing expanse of the Atlantic Ocean on board the HANSEATIC inspiration.
- Stay comfortably in the cabin you booked and benefit from the exclusive savings for combination travellers.  
(Valid for double and single occupancy.)

Cruise-only price for INS2321 per person (extension price) just

EUR 1,390/USD 1,670<sup>1</sup>/  
GBP 1,230<sup>2</sup>

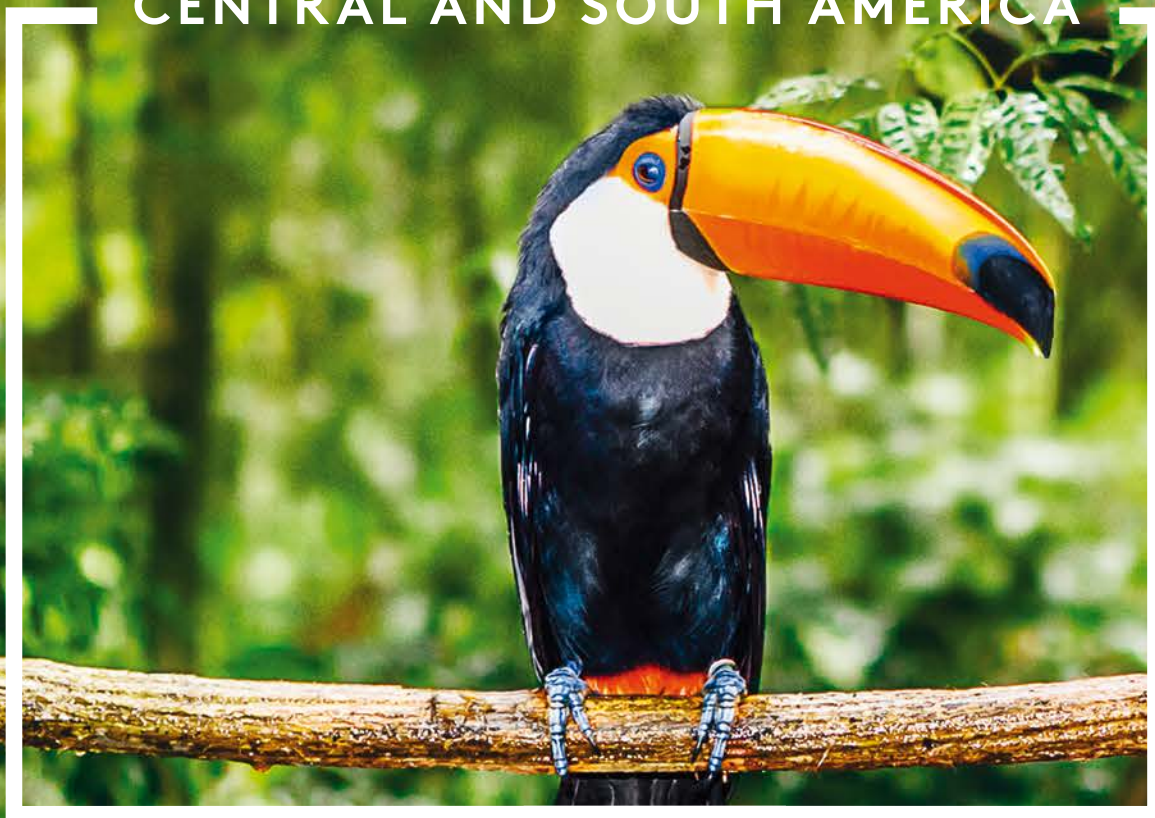
The Atlantic crossing INS2321 may, of course, also be booked as an individual cruise without this extension offer. For price information see pages 12/18/24 of the price insert or visit [www.hl-cruises.com/INS2321](http://www.hl-cruises.com/INS2321)

Exchange rates: <sup>1</sup>USD 1.20 = EUR 1.00, <sup>2</sup>GBP 0.88 = EUR 1.00

EXTEND & SAVE



CENTRAL AND SOUTH AMERICA







Expedition Panama Canal and South America · 3 Nov – 17 Nov 2023 · 14 days

# EXOTIC WORLDS WITH COLOURFUL HISTORY

Between the Pacific and the Atlantic lies a kaleidoscope of creation. Once seized by the conquistadors and explored by scientists such as Alexander von Humboldt, the focus here is now on conservation and cultural heritage. Mysterious rainforest, pre-Columbian discoveries and relics from the time of Spanish colonialism – in-depth insights into the diverse variety of South America shape this route on the HANSEATIC inspiration. And there is no more spectacular way to start than with one of the engineering wonders of this continent. Enjoy a marvel that stretches for more than 80 km (50 mi.) with a daytime passage through the Panama Canal. As the grassland and rain-forest glide past, your team of experts will tell you about the nature and history of the canal. Learn fascinating information about the canal’s construction, significance and expansion and find out how the ship manoeuvres in the Miraflores locks. Discover the green heart of Panama from a special perspective in the Gulf of San Miguel, as traditional boats take you into the Darien jungle, Central America’s largest continuous rainforest. Gain a fascinating insight into life and culture in the Embera settlements. Exotic flora and fauna await you in Utria National Park with exceptional biodiversity. As you forge your way through the untouched Colombian rainforest with local rangers, the calls of exotic birds will echo through the treetops above the habitat of reptiles and amphibians.

Much wilder, but no less lively, Isla Lobos de Tierra greets you with its rocky beauty. The island’s name, which translates as “island of the land wolves”, was

inspired by its enormous population of sea lions. If the authorities grant permission, the Zodiacs will take you ashore, where you may be able to watch pelicans and blue-footed boobies. With a little luck, chains of Guanay cormorants swooping low over the water will herald your approach to the Islas Guanape – a group of rugged rocky islands that provide a habitat for sea lions and thousands of Peruvian boobies and Inca terns. Perhaps some time on the Observation Deck or glass balconies will reward you with the sight of whales surfacing. From South America’s most important trading port, Callao, you’ll delve into fascinating chapters in the country’s history. Explore Lima, the capital of Peru\*, which was founded in 1535 by the Spanish conqueror Francisco Pizarro. The fascinating “City of Kings” has a lively atmosphere, surprising contrasts and monasteries from colonial times. As you visit the temple ruins\*, modern urban architecture contrasts with a remnant of Peru’s oldest culture: the sacred burial temple of Huaca Huallamarca from the sixth century. The Paracas Peninsula in South America’s largest marine reserve may look like a desert, but it is in fact full of life. Take a boat trip to the lively Islas Ballestas\*, teeming with seabirds and seals. A flight over the mysterious Nazca Lines\* reveals the natural beauty and an enigma that is over 2,000 years old at this UNESCO World Heritage Site. There are many theories about the origins of the geometric figures and monumental animal images in the desert landscape. The country’s most important wineries are located in the region and monks perfected the art of brandy making there. The history of South American



From Colon to Valparaiso			INS2322
Fri	3 Nov	Individual travel arrangements to Colon Colon/Panama	
Sat	4 Nov	Overnight stay on board Colon, departure 5.00 hrs Daytime passage through the Panama Canal	
Sun	5 Nov	Gulf of San Miguel/Panama ⚓	
Mon	6 Nov	Utria National Park/Colombia ⚓	
Tue	7 – 8 Nov	Relaxation at sea	
Thu	9 – 10 Nov	Peru (Isla Lobos de Tierra ⚓, cruising off Islas Guanape)	
Sat	11 Nov	Callao (Lima)/Peru, from 7.00 to 18.00 hrs	
Sun	12 Nov	Paracas/Peru, from 7.00 to 17.00 hrs ⚓	
Mon	13 – 14 Nov	Relaxation at sea	
Wed	15 – 16 Nov	Chile (Puerto Caldera ⚓, Coquimbo)	
Fri	17 Nov	Valparaiso/Chile, arrival 6.00 hrs Individual travel arrangements from Valparaiso	

⚓ = at anchor For prices, see the price insert from page 12.

winegrowers and their world-famous products is reflected in Peru’s national drinks: pisco sour and wine\*.

The palaeontological museum in the port of Puerto Caldera will take you on a journey far back in time. It is housed in a former railway station, where ore from the mines once passed through on its way to be shipped. Give in to temptation at the market in Coquimbo and try some of the exotic fruit – or stroll along the shopping streets in Chile’s second-oldest city with an excursion to colonial La Serena\*. In the midst of the desert-like landscape, the Elqui valley\* with its fruit plantations and vines seems to emerge like a green mirage. But this is no optical illusion – simply another vivid facet of South America to cherish in your memories.

## HIGHLIGHTS

- Masterpieces of humankind and nature: contrasts of South America between the Panama Canal and Chile
- The fascinating Panama Canal and its importance as a lifeline and economic artery
- Learn about the indigenous people, their lives and their traditions in harmony with the rainforest
- Exotic paradise brimming with life, including Peruvian boobies, Humboldt penguins, sea lions and pelicans
- Traces of history and great mysteries – from millennia-old cultures to the conquistadors

\*The shore activities are not included in the cruise price and are in the planning stage. Subject to change without notice.





Expedition Chilean Fjords  
17 Nov – 1 Dec 2023 · 14 days

# EVOLUTION IMMORTALISED IN ROCK AND WATER

A sense of freedom and great pioneering spirit are in the air as the HANSEATIC inspiration sets a course for a wonderful array of Chile’s natural spectacles. Isolated, untouched, unspoilt – your small expedition ship will thoroughly explore the northern and southern fjords. But first, you’ll visit *Niebla*. Once a 17th-century hotspot for pirates and corsairs, it is now a popular beach town. A city tour of *Valdivia\** traces historic footprints and takes you into the lively hustle and bustle of the market. A hike in *Oncol National Park\** will introduce you to the natural treasures of the *Valdivian* rainforest, such as the *radal* and *meli* trees. Chile’s landscape presents the visual proof of the unbelievable energy in the Earth’s core where several tectonic plates meet. You’ll be fired with enthusiasm by the three volcanoes in *Chaiten* that exemplify this primeval world. You can get up-close to the countless passages and nautical challenges on the many outside decks, the glass balconies and the deck tour at the bow. Let your yearning for adventure run wild, surrounded by snow- and ice-covered hills. There is no limit to the awe-inspiring sights on your flexible expedition in Chile’s northern fjords. As you cruise, the captain and crew will select the most fascinating routes to stunning experiences. The picturesque route to *Caleta Tortel* – connected by walkways made of cypress wood that are 7.5 km (4.7 mi.) long – is very special. Meet the little more than 90 inhabitants in *Puerto Eden*, who live in the “middle of nowhere”. The excitement on board will mount as you glide past majestic glaciers and enjoy the vast panoramas



from the many open deck areas. There are phenomenal views in store as you pass the *Pío XI Glacier*. Marvel at one of South America’s biggest ice masses with its bizarre craggy surface sparkling in blue and white.

Chile’s southern fjord landscape offers the extraordinary every day with thrilling glacier adventures. The HANSEATIC inspiration allows plenty of time for intensive experiences and wildlife watching as you cruise. The journey becomes the destination, as impressively reiterated by the passage through the *Kirke Narrows* – a route to *Puerto Natales* measuring only around 100 m (328 ft) wide. The port city can often only be reached by plane, but on board the ship you are surrounded by nature and may even see dolphins, whales and seals. One of Chile’s highlights, with mountains reaching 3,000 m (9,843 ft) at their peak, is the *Torres del Paine National Park\**. Over 100 different species, including rheas, flamingos and Andean condors, live between glittering waterfalls, extensive forests and shimmering aquamarine mountain lakes. A trek to the *Base Las Torres\** offers the opportunity to observe the natural surroundings whilst on the move. Travelling in the wake of the first person to circumnavigate the globe, you will reach the seldom-visited *Tucker Islands* via the famous *Strait of Magellan*. They are the ideal expedition territory for an exciting *Zodiac* ride, where you can keep a lookout for *Magellanic* penguins and cormorants. The pioneering spirit of the golden age of seafaring will bowl you over in *Punta Arenas*, too. From there, a hike in *Magallanes National Reserve\** takes you into a world of diverse flora. The fauna, on the other hand, will be the focus on an excursion to see the *Magellanic* penguins on *Isla Magdalena\**. Thousands of the creatures congregate here at this time of year. Those who like to discover nature in a more active way will be in their element on a kayak tour of the *Strait of Magellan\**. Cruising through the *Beagle Channel* with a passage through “*Glacier Alley*” also reveals natural beauty in all its glory. And cruising off the *Garibaldi Glacier* with its blue, shimmering tongue of ice will be a definite highlight of this cruise. Your curiosity has brought you to Chile’s wonderland of creation, and you will return home with deep insights.

From Valparaiso to Ushuaia			INS2323
		Individual arrangements to Valparaiso	
Fri	17 Nov	Valparaiso/Chile, departure 20.00 hrs	
Sat	18 Nov	Relaxation at sea	
Sun	19 Nov	Niebla (Valdivia)/Chile ⚓	
Mon	20 – 23 Nov	Chile’s northern fjords ⚓ (Chaiten, cruising in the northern fjords, Caleta Tortel, Puerto Eden, passing the Pío XI Glacier)	
Fri	24 – 27 Nov	Chile’s southern fjords ⚓ (passing the Calvo Glacier and Amalia Glacier, passage through the Kirke Narrows, Puerto Natales, sailing through the Strait of Magellan)	
Tue	28 Nov	Tucker Islands/Chile ⚓	
Wed	29 Nov	Punta Arenas/Chile	
Thu	30 Nov	Sailing through the Beagle Channel, cruising off the Garibaldi Glacier	
Fri	1 Dec	Ushuaia/Argentina, arrival 6.00 hrs Charter flight to Buenos Aires/Chile Individual travel arrangements from Buenos Aires	

⚓ = at anchor For prices, see the price insert from page 12.

The itinerary depends on official approval and weather conditions. The natural experiences and wildlife sightings described are possibilities on this expedition and are not guaranteed.

HIGHLIGHTS

- Like a giant history book, Chile’s northern and southern fjords tell the story of how the world was created – with the *Torres del Paine National Park\** as a particular highlight
- Contrasts beyond all expectations with majestic glaciers, tranquil waterways and bizarre volcanoes
- Wildlife watching in a rich animal kingdom with condors, rheas, flamingos, dolphins and whales
- Insights into the life of the Chileans against a vast backdrop of nature
- Active adventures in nature such as hikes in stunning national parks



WHERE EXPLORERS' HEARTS DANCE THE SAMBA

Once upon a time, land, gold and religion lured Portugal's seafarers across the Atlantic to South America's east coast. The HANSEATIC inspiration will also set sail for grand discoveries, starting in one of Brazil's oldest cities, **Sao Francisco do Sul**. Stories of immigrants from the 19th century unfold in **Blumenau**, the **German city**\* – with half-timbered houses like you see in the Black Forest. The same colonial roots will shape your **visit to Joinville**\*, where European charm can be felt in the cathedral and beyond. In **Parati** explore a particularly well preserved UNESCO World Heritage Site in the colonial style with a **walk through historic Parati**\*, where stylish houses with whitewashed facades and colourful windows reflect the riches brought by the great gold rush. A **schooner trip, snorkelling and swimming**\* await on an excursion to the bays and beaches of the outlying islands with their exotic flora. The majority of **Ilha Grande** is a natural Garden of Eden of barely accessible jungle. The island formerly inhabited by the Tupinamba people is now a dream destination for nature lovers and hikers. Once a pirate hideaway, it was later colonised by the Portuguese and became an infamous place of imprisonment. Find out more about the island's colourful history and its flora with a **boat ride and hike to Lopes Mendes Beach**\*. This hidden bay will reward your efforts with powder-white sand and turquoise water. The laid-back beach life provides a contrast with vibrant Copacabana, your next destination. Like Christ the Redeemer on Mount Corcovado, **Rio de Janeiro** will welcome you with open arms and a zest for life. On the **city tour and Sugarloaf Mountain**\* excursion, feel the heartbeat

of the city between wonderful colonial buildings and the monumental Maracana Stadium. Enjoy very special views with a **helicopter flight over Rio**\*. If you're hungering for some culinary temptations, embark on an exceptional tour through markets to street food trucks and little bars: **Eat Rio – facets of Brazilian cuisine**\*. The mountains above Rio reveal imperial aspects with the palace of the former emperor, Dom Pedro II, in **Petropolis – the imperial city**\*.

Big-city life gives way to the charms of a glamorous holiday destination of international renown in the formerly sleepy fishing village of **Armacao dos Buzios**, which was brought to fame by Brigitte Bardot and Jacques Cousteau in the 1960s. Discover how beautiful the curvaceous coastlines are with a **schooner trip to the beaches of Buzios**\*. Relax on the sandy shore or keep an eye out for sea turtles as you snorkel. Explore **Porto Seguro** in the spirit of Pedro Álvares Cabral, who first made land near here when he discovered Brazil. Take a stroll through the historic upper town or simply relax on idyllic beaches – the choice is yours. Gain an insight into the life and rituals of the Pataxo people at **Jaqueira Indian Reserve**\*, or embark on a **jungle hike in the Mata Atlantica**\*. Take a look behind the green curtain and investigate the rustling, chirping, buzzing and calls. Which animals will show themselves? Colonial history and the Afro-Brazilian way of life are closely intertwined in **Salvador**. The "sacred city" earned its UNESCO World Heritage status thanks to sights such as its baroque cathedral, which you will see on a **walk through the old town of Salvador**\*. The city is a cradle of the acrobatic martial art



From Montevideo to Belem			INS2404
		Individual travel arrangements to Montevideo	
Wed	28 Feb	Montevideo/Uruguay, departure 18.00 hrs	
Thu	29 Feb – 1 Mar	Relaxation at sea	
Sat	2 Mar	Sao Francisco do Sul/Brazil, from 8.00 to 14.00 hrs	
Sun	3 Mar	Parati/Brazil, from 13.00 to 24.00 hrs ⚓	
Mon	4 Mar	Ilha Grande/Brazil, from 6.00 to 23.00 hrs ⚓	
Tue	5 Mar	Rio de Janeiro/Brazil, from 7.00 to 21.00 hrs	
Wed	6 Mar	Armacao dos Buzios/Brazil, from 7.00 to 18.00 hrs ⚓	
Thu	7 Mar	Relaxation at sea	
Fri	8 Mar	Porto Seguro/Brazil, from 7.00 to 14.00 hrs ⚓	
Sat	9 Mar	Salvador/Brazil, from 7.00 to 17.00 hrs	
Sun	10 – 13 Mar	Relaxation at sea	
Thu	14 Mar	Belem/Brazil, arrival 2.00 hrs ⚓ (subject to the tides)	
		Individual travel arrangements from Belem	
⚓ = at anchor		For prices, see the price insert from page 13.	

and dance form capoeira, which impressively reflects how life here is shaped by music and dance. Away from the typical tourist routes, rhythm and cultural riches come alive in an exciting **percussion workshop**\* or with a **market visit and cookery course**\*. The relaxed days at sea beneath the southern sun are the perfect way to end your cruise. You'll have time to savour the many options on board – from wellness and fitness, to expert lectures and independent study in the Knowledge Studio, as well as diverse cuisine. Indulge in the comforts on board, reflect on your experiences in colourful Brazil and end your cruise in style.

HIGHLIGHTS

- The full variety of Brazil on one cruise: from rain-forests and fantastic beaches to colonial heritage and vibrant cosmopolitan cities
- Picture-perfect visions of a nation: each region reveals a different character and has its own stories to tell
- Gain a new understanding of culture and tradition
- The rhythm of the tropics: experience the typical Brazilian way of life with all your senses
- Time for enjoyment: savour the comforts on board with relaxed days at sea and treat yourself to some pampering

\*The shore activities are not included in the cruise price and are in the planning stage. Subject to change without notice.





Expedition Amazon (upstream)  
14 Mar – 1 Apr 2024 · 18 days

## TRACING AN EXOTIC LIFELINE

If nature’s orchestra has created a masterpiece, then it’s the Amazon. Even the name evokes a sense of temptation, risk and a yearning for adventure. But it also reminds us of the need to protect unique ecosystems. How does it feel to hear, see and sense it for the first time? Find out on board the small HANSEATIC inspiration. Experience exotic animals, traditional ways of living and tropical plants from the deck and Zodiacs – weather and currents permitting – as you travel around 4,000 km (2,485 mi.). The **daytime passage through the Breves Channels** hints at nature’s fantastic creations. Venture all the way to Iquitos in Peru, accompanied by the calls of toucans, yellow-headed caracaras and saffron finches. Your experts on board will enhance your perception and awareness of just how sensitive this biotope is. They will comment on what you see and deepen your knowledge with fascinating presentations.

To date, around 40,000 plant species have been described in the Amazon region, along with around 1,300 types of bird and more than 400 mammals. Which species will you discover? With luck, you may catch sight of pink river dolphins as you travel by Zodiac close to **Guajara**, for instance. The young are grey at first and only change colour at the age of two. At the small riverside settlement of **Virassaia**, look out for a special feathered friend: the indigenous hoatzin. You might even see herons and cormorants as you enjoy Zodiac rides through the species-rich floodplain areas.



New surprises await around every bend in the river. In **Alter do Chao**, an almost Caribbean beach suddenly appears on the emerald-green Rio Tapajos, inviting you to relax and swim – a wonderful introduction to the Brazilian way of life, which you will get to know even better in **Parintins**. Pay a visit to the cathedral or treat yourself to some regional delicacies. Try tapioca, a starch extracted from cassava root that is cooked with palm fruit or banana porridge. Seek out a totally different natural treasure in **Canacari**. The Zodiacs will transport you through drifting pastures in search of the world’s largest water lilies. Their gorgeous leaves are nearly 3 m (10 ft) in diameter. Again and again, you will discover hidden paradises and marvel at exotic plants and creatures. The experts will enhance your experiences with their specialist knowledge. They’ll highlight the extent to which commercial interests are taking over and endangering this natural treasure trove, but also the work of global rescue and reforestation initiatives. In **Manaus**, you will see how closely nature and culture intertwine on the banks of the Amazon. The colonial past and global present meet in the magnificent jungle metropolis. The **city’s history and opera house\*** bear witness to the time when this former centre of rubber made its fortune, with modern glass facades sitting alongside classical and art nouveau buildings. On a **scenic flight above Manaus\***, these impressions will intensify as the jungle and city merge.

Bear witness to the legendary “Encontro das Aguas” on the **Rio Negro**. The “Meeting of Waters” is the spectacular confluence between the dark Rio Negro and the pale, sandy-coloured Rio Solimoes, the name for this part of the Amazon River. Your journey continues to **Lago Ajura**. The Zodiac will carry you along small channels into the flooded forest. The treetops of lofty strangler figs sprouting from mighty tree trunks are reflected on the surface of the water. The lush green banks accentuate the red flowers of bromeliads and passion flowers. Will you spot capuchin monkeys doing gymnastics in the trees or well-camouflaged iguanas? Your night-time Zodiac ride near **Cuxiu Muni** will become even more thrilling if the eyes of caimans penetrate the darkness. This unique cruise is filled with astonishing sights – for example on the **Rio Jutai**, when the cries of tropical birds reverberate across the water. Visit the colourful, vibrant markets of **Leticia**, where aromatic spices and exotic fruits inspire the senses. In **Pevas**, the stilt buildings of the native Peruvian village provide an insight into life in the wilderness. It’s hard to believe that when you reach **Iquitos**, your adventure will have covered almost 4,000 km (2,485 mi.) of the Amazon. Its natural treasures will enrich your memories for a long time to come.

### From Belem to Iquitos

INS2405

		Individual travel arrangements to Belem
Thu	14 Mar	Belem/Brazil, departure 19.00 hrs ⚓ (subject to the tides)
Fri	15 Mar	Daytime passage through the Breves Channels
Sat	16 – 20 Mar	Upstream on the Amazon with Zodiac landings (a.o. Guajara, Virassaia, Alter do Chao, Parintins, Canacari)
Thu	21 – 22 Mar	Manaus/Brazil
Sat	23 Mar	Rio Negro/Brazil ⚓
Sun	24 – 31 Mar	Further upstream on the Amazon with Zodiac landings (a.o. Lago Ajura, Cuxiu Muni, Rio Jutai, Leticia, Pevas)
Mon	1 Apr	Iquitos/Peru, arrival 7.00 hrs ⚓ Charter flight to Lima/Peru Individual travel arrangements from Lima

⚓ = at anchor For prices, see the price insert from page 14.

The itinerary depends on official approval and weather conditions. The natural experiences and wildlife sightings described are possibilities on this expedition and are not guaranteed.

### HIGHLIGHTS

- One cruise, two options: upstream (INS2405) and downstream (INS2406) with the upper reaches of the Amazon
- Expedition in the purest sense: numerous Zodiac rides take you deep into the labyrinth of spellbinding tributaries
- Beauty that demands protection: see the exotic flora and fauna by day and by night
- People on the river: small settlements provide insights into life against the green backdrop of the jungle
- Form your own impressions of the sensitive biotope as you reflect on the economic interests, conservation and politics

\*The shore activities are not included in the cruise price and are in the planning stage. Subject to change without notice.





Expedition Amazon (downstream)  
1 Apr – 19 Apr 2024 • 18 days

## LEGEND, LIFE SOURCE AND LABYRINTH

The Amazon, or “Rio Mar” (sea river) as it’s known by the locals, is both a global symbol of the need to protect our nature and a wondrous, record-holding waterway. It is the setting for thrilling natural spectacles that you will experience respectfully and in the company of experts on the small, manoeuvrable HANSEATIC inspiration and its Zodiacs. Travel from **Iquitos** to the mouth of the river at the Atlantic, around 4,000 km (2,485 mi.) away. Your first destination is **Pevas**, one of the oldest Peruvian settlements on the Amazon, which still features traditional stilt buildings. The markets of **Leticia** are a vibrant example of a culture that lives in harmony with nature. Tropical fruits and fresh spices will enrapture your senses, while the hoots and calls of the parrots provide the soundtrack. Keep watch for exotic species on the **Rio Jutai**. When the Zodiacs sail through the night-time jungle of **Cuxiu Muni**, look out for the eyes of caimans shining through the darkness. Since 2001 alone, more than 1,200 previously unrecorded animal and plant species have been discovered in the Amazon region – another sign of how unique and precious this ecosystem is. A Zodiac ride through the flooded forests of **Lago Ajura** will raise your awareness of how special this place is. Strangler figs rise up on the densely overgrown banks, epiphytes that have decided to “fight” for the available light. Discover giant Brazil nut trees and the red flowers of bromeliads and passion flowers while the experts enhance your perspective on the fascinating undergrowth – for example, to help you marvel at the capuchin monkeys doing



gymnastics in the trees and the well-camouflaged iguanas. See the legendary “Meeting of Waters” on the **Rio Negro**, where its black waters converge with the light-brown Rio Solimoes. Its shores will lead you to the “Paris of the Tropics”. Find out how the Brazilian metropolis of **Manaus** earned this nickname on a tour of **the city’s history and opera house\*** surrounded by classical and art nouveau architecture. A vibrant mosaic of culture and wilderness stretches out beneath you on a **scenic flight above Manaus\***.

In **Canacari**, your focus will be on searching for the world’s largest water lilies and other exotic species. By contrast, flourishing city life is waiting to be discovered in **Parintins** on the middle course of the Amazon. Immerse yourself in Brazil’s typical zest for life – whether on the promenade or in the market. On **Alter do Chao** beach, the waves exude an almost Caribbean flair. Find a kindred spirit in the sloth, and enjoy simply doing nothing. The indigenous hoatzin also likes to take things easy and prefers sitting in the trees to flying. With a little luck, you will be able to see this bird around the small riverside settlement of **Virassaia**. Over 1,000 species of bird live in the Amazon region. You might even see herons and cormorants as you enjoy Zodiac rides through the floodplain areas. If you’re lucky, you’ll be treated to the sight of pink river dolphins surfacing nearby in **Guajara**. The young are grey at first and only take on the unusual colouring from the age of two. The **daytime passage through the Breves Channels** once again demonstrates the advantages of the small HANSEATIC inspiration. The lush vegetation on the shore comes closer and closer to the ship as it confidently negotiates the challenging changes in direction – to the great delight of the locals, the caboclos, who can be seen along your route in boats large and small. Enjoy the legend of the Amazon with all your senses once again. As your expedition slowly draws to a close, the experts on board will once again quench your thirst for knowledge and shed light on the tensions between the region’s unspoilt nature and global economic interests. You will arrive in **Belem** with a whole host of unforgettable memories and a true appreciation for this legendary region. The experience ensures that you’ll remain fascinated by the wonderful world of the Amazon as long as your river of life continues to flow.

### From Iquitos to Belem

INS2406

Mon	1 Apr	Individual travel arrangements to Lima Charter flight to Iquitos/Peru, departure 18.00 hrs ⚓
Tue	2 – 9 Apr	Downstream on the Amazon with Zodiac landings (a.o. Pevas, Leticia, Rio Jutai, Cuxiu Muni, Lago Ajura)
Wed	10 Apr	Rio Negro/Brazil ⚓
Thu	11 – 12 Apr	Manaus/Brazil
Sat	13 – 17 Apr	Further downstream on the Amazon with Zodiac landings (a.o. Canacari, Parintins, Alter do Chao, Virassaia, Guajara)
Thu	18 Apr	Daytime passage through the Breves Channels
Fri	19 Apr	Belem/Brazil, arrival 9.00 hrs ⚓ (subject to the tides) Individual travel arrangements from Belem

⚓ = at anchor For prices, see the price insert from page 14.

The itinerary depends on official approval and weather conditions. The natural experiences and wildlife sightings described are possibilities on this expedition and are not guaranteed.

### HIGHLIGHTS

- One cruise, two options: upstream (INS2405) and downstream (INS2406) with the upper reaches of the Amazon
- Expedition in the purest sense: numerous Zodiac rides take you deep into the labyrinth of spellbinding tributaries
- Beauty that demands protection: see the exotic flora and fauna by day and by night
- People on the river: small settlements provide insights into life against the green backdrop of the jungle
- Form your own impressions of the sensitive biotope as you reflect on the economic interests, conservation and politics

\*The shore activities are not included in the cruise price and are in the planning stage. Subject to change without notice.



EXTEND & SAVE  
Go with the flow from the wonders  
of the Amazon to a spellbinding  
Atlantic crossing.

Extension price of just  
**EUR 2,790**  
per person (see inside for details).





19 Apr – 30 Apr 2024 · 11 days ·

INS2407

## VAST OCEAN AND DEEP RELAXATION

From Belem/Brazil to Porto/Portugal

Enjoy a relaxed break at sea after your Expedition Amazon (INS2406) or set the scene for your cruise around Great Britain (INS2408, see page 80). Experience all the amenities of the HANSEATIC inspiration for eleven days with an Atlantic crossing at an attractive special rate.

- Experience the ocean route between the continents in complete comfort on board.
- Stay in the same cabin you booked and benefit from the exclusive savings for combination travellers.

(Valid for double and single occupancy.)

Cruise-only-price INS2407 per person (extension offer) only

EUR 2,790/USD 3,350<sup>1</sup>/  
GBP 2,460<sup>2</sup>

The Atlantic crossing INS2407 may, of course, also be booked as an individual cruise without this extension offer. For price information see pages 14/20/26 of the price insert or visit [www.hl-cruises.com/INS2407](http://www.hl-cruises.com/INS2407).

Exchange rates: <sup>1</sup>USD 1.20 = EUR 1.00, <sup>2</sup>GBP 0.88 = EUR 1.00

EXTEND & SAVE





NORTHERN AND  
WESTERN EUROPE





Expedition circumnavigation of Great Britain · 30 Apr – 13 May 2024 · 13 days

# IN THE KINGDOM OF CONTRASTS

What is typically British? Stately gardens or rugged islands? Victorian charm or nonchalant cool? This exciting cruise commencing on the Iberian peninsula will reveal many answers. The Galician city of **La Coruna** is your starting point for a visit to **Santiago de Compostela**\*. The Way of Saint James is not the only route to lead here – the little known Camino Ingles harks back to medieval pilgrims from England. We will follow their sea voyage back, but you will first visit the tropics in the Celtic Sea. Some 45 km (28 mi.) off the British mainland, the **Isles of Scilly** are surprisingly like a kind of “English South Seas”, complete with white sandy beaches and exotic vegetation. In the famous Abbey Garden on Tresco, over 4,000 plants are proof of the effects of the mild Gulf Stream. The neighbouring island of St Mary’s, whose picturesque coastal landscape is perfect for walking, beckons with natural beauty. The small rugged island **Lundy** is a wildlife paradise. Will the weather allow a landing? There are many endemic plants to be found in the protected habitat of grey seals and puffins. The historic port of **Ilfracombe** creates a particularly picturesque scene on the north coast of Devon. The small seaside resort is an inviting place to take a stroll through streets with colourful facades. Enjoy a Zodiac ride off **Skomer Island** and see the magnificent population of Manx shearwaters, guillemots and puffins.

The scenery shifts from nature to the trendy city of **Liverpool**. Trace the footsteps of the **Beatles**\* to the beat of the 1960s. **Historic Chester**\* offers a blend of medieval, Georgian and Victorian architecture, alongside

its Anglo-Norman cathedral. Take advantage of the long lay time for the HANSEATIC inspiration and also get to know Liverpool in the evening, for example with a trip to a typical pub. In the Irish Sea, the charming **Isle of Man** provides the stage for exciting cultural experiences. One of the world’s oldest parliaments, Tynwald Court, can be found here, as well as the Manx Gaelic spoken language. While the long seafront promenade invites you for a stroll in Douglas, you can also take the **steam train to Rushen Castle**\* – one of Europe’s best-preserved medieval castles. Or you could ride on a three-wheeled motorcycle **on the Isle of Man TT circuit**\* for an insight into the legendary Tourist Trophy race.

Unspoilt landscapes welcome you to the Inner Hebrides, where you can explore the cradle of Scottish Christianisation with a landing on the remote island of **Iona**. The island **Lunga** is a haven for numerous species of seabird. Watch the puffins and other feathered creatures from a Zodiac. Your spirit of exploration will also soar in the small port of **Ullapool** on the shores of Loch Broom. Venture through the gateway to the Highlands with an excursion to **Loch Ness and Urquhart Castle**\*. Alternatively, you can enjoy the marine panorama with a **kayak trip along the coast**\* to sheltered bays and deserted beaches. Untamed charm envelops the Orkney Islands. St Magnus Cathedral in the harbour town of **Kirkwall** masterfully evokes the Middle Ages with its red-and-yellow sandstone. The excursion to the **Ring of Brodgar, Skara Brae and Skail House**\* takes you on a journey through the centuries – from



the Neolithic stone circle to the Stone Age village and a 17th-century manor house. A **hike along the coastal cliffs**\* takes you past Iron Age towers and offers breathtaking views of magical coastlines and green hills. **Aberdeen** provides the finishing touch for your cruise as an impressive **city of flowers and granite**\* with its tropical winter garden and medieval architecture. Not far away is **Balmoral Castle**\*, the Queen’s charming summer residence. At the end of this cruise, the many island contrasts and the wealth of experiences you’ve enjoyed will mean you now know exactly what’s typically British.

## From Porto to Hamburg

INS2408

Tue	30 Apr	Individual travel arrangements to Porto Leixoes (Porto)/Portugal, departure 19.00 hrs
Wed	1 May	La Coruna/Spain, from 14.00 to 20.00 hrs
Thu	2 May	Relaxation at sea
Fri	3 – 4 May	South England/Great Britain ⚓ (Isles of Scilly, Lundy, Ilfracombe)
Sun	5 May	Cruising off Skomer Island/Wales
Mon	6 May	Liverpool/England, from 8.00 to 23.00 hrs
Tue	7 May	Douglas/Isle of Man, from 8.00 to 15.00 hrs
Wed	8 May	Inner Hebrides/Scotland ⚓ (Iona, Lunga)
Thu	9 May	Ullapool/Scotland, from 8.00 to 18.00 hrs ⚓
Fri	10 May	Kirkwall/Orkney Islands/Scotland
Sat	11 May	Aberdeen/Scotland, from 7.30 to 15.30 hrs (lay time subject to tides)
Sun	12 May	Relaxation at sea
Mon	13 May	Hamburg/Germany, arrival 8.00 hrs Individual travel arrangements from Hamburg

⚓ = at anchor For prices, see the price insert from page 14.

## HIGHLIGHTS

- Britain at its best: from the tropical Isles of Scilly to the rugged coasts of Scotland
- Active experiences in nature with Zodiac rides and hikes surrounded by picturesque scenery
- Architecture reflecting the centuries – with castles and historic stone circles
- Manx shearwaters, guillemots and puffins – the best season for birdwatching
- Urban living: the trendy cities of Liverpool and Aberdeen beckon







Short cruise northern Germany · 23 May – 31 May 2024 · 8 days

# STORIES ON BALTIC AND NORTH SEA SHORES

Head into spring with a great spirit of discovery. The HANSEATIC inspiration blends grand Baltic classics with Frisian coastal gems and invites you to take your time as you relax and explore ahead of the peak season. As far back as the late 19th century, **Rügen** enchanted its visitors with romantic coastal cliffs, long sandy beaches and fabulous forests. The splendid architecture in the resort of Binz dates from this period. The white art nouveau villas stand to attention along the promenade with their carved ornamental latticework and decorative metal balconies. Discover the chic charm of the age of German kaisers and classical architecture in an active way with a **bicycle tour through the seaside resorts**\*. Soak up the nostalgia on a **train ride to Putbus on the "Rasender Roland"**\*. Germany's oldest narrow-gauge railway has been traversing this route for over 100 years. Alternatively, follow in the footsteps of Caspar David Friedrich with a **walk in Jasmund National Park**\* and see the famous chalk cliffs for yourself. Relax and recharge surrounded by the picturesque sandy beach and maritime harbour atmosphere of **Boltenhagen** on the Baltic Sea. Enjoy an independent stroll along the promenade or through the spa gardens and imagine what this seaside health resort would have once been like amongst the old architecture. Travel back to the time of the Hanseatic League in **Wismar** with one of Germany's best-preserved medieval town centres, which has been a UNESCO World Heritage Site since 2002. A **walking tour of the Hanseatic city**\* will paint a picture of the merchants, traders, sailors

and fishermen at work. See the modern art of construction with a **daytime passage through the Kiel Canal**, where you'll pass under one of Germany's most important monuments to engineering – the Rendsburg High Bridge. Your experienced experts on board will provide extensive information about how it was created and the beautiful landscapes of northern Germany.

Say hello to the North Sea as you take a deep breath of the fabulous ocean air in **Borkum** and let the iodine-infused breeze lift your spirits. There is an impressive wealth of scenery here, shaped by beach grass, heather and other plants. **Hike through the mudflats of the Wadden Sea National Park**\* to see the salt marshes and dunes that provide an unspoilt habitat for fascinating birdlife. An **island tour**\* is a great way to get to know the typical East Frisian charm. You can rely on the knowledgeable guides to share in-depth information about the island, its history and the sights. One of North Germany's most imposing natural landmarks awaits you on **Helgoland** in the form of Lange Anna, a fiery-red stack of rock that towers over 45 m (148 ft) high. The island is a breeding ground for northern gannets and many other species of bird. One of Germany's smallest nature reserves is close enough to see and touch, as common murre hunt for crabs and small fish on the Lummenfelsen. You, meanwhile, will hunt for spectacular panoramas on a 2.8 km (1.7 mi.) walk along the edge of the cliffs or with a Zodiac ride.

One of Germany's most popular islands, **Sylt**, welcomes you to a dream landscape out in the sea. Wooden groynes amid breaking waves and dazzling dunes under an endless sky – the "queen of the North Sea" is a chic holiday paradise with natural grace. See its most beautiful side with a **vintage bus trip**\* through a wandering dune landscape, past Kampen and Hornum to Keitum with its thatched-roof houses. Or go wading with a **walk on the mudflats of Blidsel Bay**\* in search of the abundance of species in the seabed. An **e-bike ride across the island**\* is an exhilarating way to explore. Splendid views of the long stretch known as the "elbow" will bring peace to your soul. Looking back on your multifaceted adventure on Europe's doorstep, you'll have captured the Baltic coast and North Sea islands in an open book full of stories.

Voyage for  
Young Explorers  
More information: page 33



From Hamburg to Hamburg INS2410

		Individual travel arrangements to Hamburg
Thu	23 May	Hamburg/Germany, departure 19.00 hrs
Fri	24 May	Relaxation at sea
Sat	25 May	Binz/Rügen/Germany, from 8.00 to 18.00 hrs ⚓
Sun	26 May	Boltenhagen/Germany, from 7.00 to 12.30 hrs ⚓ Wismar/Germany, from 14.00 to 19.00 hrs
Mon	27 May	Daytime passage through the Kiel Canal
Tue	28 May	Borkum/Germany, from 8.00 to 18.00 hrs ⚓
Wed	29 May	Helgoland/Germany, from 7.00 to 20.00 hrs ⚓
Thu	30 May	List/Sylt/Germany, from 7.00 to 17.00 hrs ⚓
Fri	31 May	Hamburg/Germany, arrival 8.00 hrs Individual travel arrangements from Hamburg

⚓ = at anchor For prices, see the price insert from page 14.

## HIGHLIGHTS

- Salt on your lips and the wind in your hair: springlike days of discovery on the Baltic Sea and North Sea
- Travel through time to magnificent resort architecture in Binz and the vivid medieval history of Wismar
- Only possible for small ships: sailors' yarns on Borkum and North Sea romance on Sylt
- Kiel Canal by day: experience the rolling hills, marshland and geest of northern Germany from the inspiration Walk
- A pure expedition feeling: planned Zodiac ride off Helgoland





## THE ARCTIC







Expedition Norway and north-west Spitsbergen · 31 May – 15 Jun 2024 · 15 days

# DREAMS IN THE NORWEGIAN SEA BENEATH THE MIDNIGHT SUN

Set sail for the far north with this route from Hamburg to natural spectacles on both sides of the Arctic Circle. Your expedition begins where Hanseatic ships once exchanged stockfish for flour and textiles. In Bergen, old merchant houses recall the historical significance of the port city. Follow in the footsteps of the traders and visit the popular fish market on a bicycle tour of Bergen\*. Or enjoy pure nature in the Hardangerfjord\* with fascinating insights into fruit-growing in Norway. The landscape becomes ever more spectacular, reaching its first highlight in the Geirangerfjord. What stories could the thundering waterfalls tell, with names like “Seven Sisters” and “Suitor”? Sensational clear views await you at Dalsnibba and the “Eagle’s Bend”\*. Alternatively, enjoy a hike to the Storseter waterfall\* where the water tumbling from a height of 35 m (115 ft) is truly exhilarating. With the amazing natural experiences roaring in your memory, you can look forward to even greater experiences on board the HANSEATIC inspiration on the other side of the Arctic Circle.

Svolvær will welcome you to the heart of the Lofoten Islands with its deeply carved coastline set against striking mountain ranges. Travel a thousand years back in time on a scenic tour with a visit to the Viking farm\*. By contrast, an evening stroll through the little streets will show you what modern life is like in the island group. The next morning, scenes from Norwegian mythology come alive as you cruise in the Trollfjord. The fjord has a mouth

just 100 m (328 ft) wide and legend has it that trolls live here. Be captivated by the fantastic views from your front-row spot on the inspiration Walk or the glass balconies. Tranøy is another stunning part of the Lofoten Islands. Take in the expansive view of the Vestfjord and the lofty mountain peaks by exploring independently or on a hike to the lighthouse with the experts. The maritime centre of the North Cape region, Honningsvåg, offers a picturesque contrast between colourful houses and rugged landscape. Experience the unique atmosphere of the midnight sun, which never sets at this time of year, on the excursion to North Cape\*, the most northerly point on the European mainland. Alternatively, embark on a king crab safari\* and enjoy some delights cooked over an open fire and served in a typical Sami tent. With the special explorer’s highlight of cruising off North Cape, the HANSEATIC inspiration will set sail for a legendary destination in the Norwegian Sea.

On Spitsbergen, the unspoilt nature will provide an exceptional adventure in which the captain and crew set a course for new discoveries every day depending on the weather and ice conditions. There will be plenty of opportunities to watch seals, whales, walrus or even the “kings of the Arctic” – polar bears – from the deck at a respectful distance. The Zodiacs will also work tirelessly to take you ashore. In the isolation of Spitsbergen, the HANSEATIC inspiration has no fixed schedule and will only follow the call of the wild and your insatiable expedition



spirit. Forge your way along deserted coasts like the great pioneers before you and visit Hornsund, where hundreds of thousands of little auks live on the shores. Remote Ny-Alesund, an international centre for Arctic research, deserves to be immortalised in art. Explorer Roald Amundsen once set out for the North Pole from here. The shimmering blue natural wonder of the 14th July Glacier rises up before you – a sight only likely to be surpassed by the enormous Monacobreen with its edge reaching heights of up to 40 m (131 ft) in the Liefdefjord. The excitement will grow as you find out how far the HANSEATIC inspiration can make it. Guided by the spirit of adventure, you can enjoy getting right up close to the ice edge if the conditions allow. The Raudfjord will surprise you with its colourful accents and mountain slopes that shimmer in a striking red. Explore the whaling history of the 17th century on the stony island of Amsterdamoya and against a breathtaking backdrop in the Magdalenefjord. The small island of Prins Karls Forland with its large walrus herds is the crowning glory to round off your adventure. This place was one of the first landscapes that Willem Barents discovered in 1596. It is the last destination on your expedition – and one that will also make a polar pioneer of you.

The itinerary depends on official approval, weather and ice conditions. The natural experiences and wildlife sightings described are possibilities on this expedition and are not guaranteed.

## From Hamburg to Longyearbyen

INS2411

		Individual travel arrangements to Hamburg
Fri	31 May	Hamburg/Germany, departure 18.00 hrs
Sat	1 Jun	Relaxation at sea
Sun	2 Jun	Bergen/Norway, from 8.00 to 17.00 hrs
Mon	3 Jun	Geirangerfjord/Norway, from 13.00 to 19.00 hrs ⚓
Tue	4 Jun	Relaxation at sea
Wed	5 – 6 Jun	Lofoten Islands/Norway (Svolvær, cruising in Trollfjord, Tranøy ⚓)
Fri	7 Jun	Honningsvåg/Norway, arrival approx. 16.00 hrs
Sat	8 Jun	Honningsvåg, departure approx. 4.00 hrs
Sun	9 – 14 Jun	North-west Spitsbergen adventure: highlights and cruising to the ice edge depending on the local conditions ⚓ (a.o. Hornsund, Ny-Alesund, 14th July Glacier, Liefdefjord, Raudfjord, Amsterdamoya, Magdalenefjord, Prins Karls Forland)
Sat	15 Jun	Longyearbyen/Spitsbergen/Norway, arrival 7.00 hrs ⚓ Charter flight Longyearbyen – Germany** Individual travel arrangements from Germany

⚓ = at anchor For prices, see the price insert from page 14.  
---- Ice conditions determine the course here (see map).  
\*\*Approximately six months before departure, you will be informed at which German airport the charter flight will land.

## HIGHLIGHTS

- A route of rich experiences from the spectacular landscape of Norway to the untouched wilderness of Spitsbergen
- Pure Nordic nature – with mighty glaciers, thundering waterfalls and deep fjords
- Unforgettable wildlife watching in the realm of whales, seals, polar bears and hundreds of thousands of seabirds
- The enchanting midnight sun – marvel at the magical moods of the light at North Cape
- Active Arctic adventures – explore the regions’ legends and history with hikes after Zodiac landings



OUR CLASSIC EXPEDITION:  
DISCOVER SPITSBERGEN IN DEPTH  
ON A FLEXIBLE ROUTE







INS2415: Voyage  
for Young Explorers  
More information: page 33

### Expedition Spitsbergen adventure

## PURE ARCTIC AROUND THE SVALBARD ARCHIPELAGO

**M**ake a once-in-a-lifetime trip to Spitsbergen. Kindle the myths with your own adventures. Go where few people have been before. Discover a world of fascinating other-worldliness that is still in the spotlight of geopolitics and climate policy. The archipelago of around 400 islands – of which Spitsbergen is the largest – is officially called Svalbard, which means “cold coast”. In this nautically challenging expedition territory, the HANSEATIC inspiration can take full advantage of its small and manoeuvrable design with the highest ice class for passenger ships. The route will be determined by nature and the flexible itinerary will be decided by the weather and ice. Whereas the west coast is navigable almost all year round, the waters in the north are covered with solid sea ice into June some years. If the conditions allow, the HANSEATIC inspiration will forge a path through the fields of drifting ice in the Hinlopen Strait and attempt the circumnavigation. Alternatively, your ship will sail to the ice edge and then explore the west of the archipelago in greater depth.

**S**haped by mighty glaciers, deep fjords and unspoilt wilderness, the icy habitat of polar bears, Arctic foxes, whales and walrus will awaken true feelings of discovery. No two days are the same here. The captain and crew will constantly adapt the route and decide where the Zodiacs will land

next. The unpredictable nature and spontaneous reactions create a feeling of pure expedition. Follow in the footsteps of Willem Barents, for instance, who discovered the island group around 400 years ago. The past and present are particularly closely intertwined in [Ny-Alesund](#). In 1926, this was the starting point for the airship *Norge*, in which the polar explorer Roald Amundsen and airship designer Umberto Nobile became the first people to reach the North Pole. From the 1960s, the world’s northernmost settlement was transformed from a former mining town into an international centre of science with several research stations. Find out the fascinating importance of this place for climate research and weather forecasting on a walking tour with your experts – perhaps you’ll also spot Arctic terns putting on a sensational aerial display. The archipelago’s more than 2,000 glaciers make fascinating research subjects. The spectacular [14th July Glacier](#) is one such specimen. Its gleaming blue edge showcases its untameable natural power as huge chunks of ice break away from it and fall into the sea, thunderously interrupting the silence of the Arctic. Arctic flowers bloom on the nearby slopes, while kittiwakes and thick-billed murres nest on the cliff. The [Magdalenefjord](#) is equally spectacular. It takes its name from the patron saint of the whalers whose lives are remembered by the historic graves in the glacier fields.



Mountain peaks frame the [Liefdefjord](#) as the majestic, shimmering blue Monacobreen rises at its end. This is a birthplace of icebergs, which begin their journey through the Arctic Ocean from here. Immerse yourself in the awe-some experience as you approach the glacier’s edge, which towers up to 40 m (131 ft) in places, and enjoy the best views from the inspiration Walk. There is a good chance of spotting polar bears from the deck at a respectful distance throughout your Spitsbergen expedition. Protected fjords and ice floes off the islands are the preferred habitats and hunting grounds for Ursus maritimus. When a shout goes up of “Polar bear spotted!”, the experienced crew will step in and bring the ship about so that you can enjoy this unforgettable sight.

If the conditions allow it, you’ll venture forth into the waters of north-east Spitsbergen, where a sense of pure expedition prevails. At only around 1,000 km (621 mi.) from the North Pole, every extra kilometre may be increasingly difficult to negotiate. Will the ice grant a passage through the eye of the needle in the [Hinlopen Strait](#)? Pack ice often builds up here, making this a challenging route. The ability to complete a circumnavigation depends on this passage.



Will the adventure be successful? If the HANSEATIC inspiration can forge its way safely through the area with its steel-reinforced hull, more days of adventure await on the east coast of Spitsbergen. The captain and officers will constantly look for impressive scenes such as the cliffs of [Alkefjellet](#): the “bird mountain” is inhabited by thousands of birds from numerous species, including thick-billed murres, kittiwakes, glaucous gulls, Arctic terns and eider ducks. The Zodiacs will take you ashore in [Palanderbukta](#) on the island of Nordaustlandet, which is largely covered in ice caps. With a little luck, you might spot reindeer, Arctic foxes, Svalbard poppies and purple saxifrage on a hike through the sparse tundra. Walrus herds like to lie on the flat ledges of rock in [Torellneset](#). The mighty bulls are a formidable sight even from a respectful distance – they can weigh over 1,000 kg (2,205 lb) and grow to 3.5 m (11.5 ft) in length. Weather and ice permitting, you will pass through the narrow [Freeman Sound](#) between Barents Island and Edgeoya. Will a landing in [Cape Lee](#) be possible? As you go ashore, you can sense the solitude of the trappers that once lived here or spot some reindeer. However, the sight of surfacing whales beats all of this. These giants of the oceans seek out protected biotopes off Spitsbergen and will happily follow ships that are passing the archipelago from time to time. If you’re lucky, the world’s largest and heaviest creature – the blue whale – will make an appearance. Last but not least, the sight of the edge of the Samarinbreen in [Hornsund](#) will become one of your many lasting memories from this cruise – framed by imposing mountains. You’ll now join Barents, Amundsen and modern-day researchers in the hall of fame of Spitsbergen’s explorers.

HIGHLIGHTS

- Four dates, one destination: experience Spitsbergen’s wilderness on a flexible route and, with luck, complete a circumnavigation
- Intensive Arctic experiences – with striking mountains, majestic glaciers and bizarre ice sculptures
- Witness the changing times: learn about climate research and the Svalbard Treaty on hikes with experts
- A new perspective on the world of icy white: Zodiacs take you into the kingdom of walrus, seals and polar bears
- Magic of the midnight sun: the summer days have no beginning or end

From Longyearbyen to Tromso

15 Jun – 25 Jun 2024 10 days

15 Jul – 25 Jul 2024 10 days

INS2412

INS2415

Day 0	Individual travel arrangements to Germany Charter flight Germany* – Longyearbyen Longyearbyen/Spitsbergen/Norway, departure 19.00 hrs ⚓
Day 1 – 8	Spitsbergen adventure: highlights with circumnavigation depending on the local conditions ⚓ (a.o. Ny-Alesund, 14th July Glacier, Magdalenefjord, Liefdefjord, cruising through the Hinlopen Street, Alkefjellet, Palanderbukta, Torellneset, cruising through Freeman Sound, Cape Lee, Hornsund)
Day 9	Relaxation at sea
Day 10	Tromso/Norway, arrival 5.00 hrs Charter flight Tromso – Germany* Individual travel arrangements from Germany

⚓ = at anchor For prices, see the price insert from page 15.  
---- Ice conditions determine the course here (see map).

From Tromso to Longyearbyen

25 Jun – 5 Jul 2024 10 days

INS2413

Tue 25 Jun	Individual travel arrangements to Germany Charter flight Germany* – Tromso Tromso/Norway, departure 20.00 hrs
Wed 26 Jun	Relaxation at sea
Thu 27 Jun – 4 Jul	Spitsbergen adventure: highlights with circumnavigation depending on the local conditions ⚓, see cruise INS2412/INS2415 (top)
Fri 5 Jul	Longyearbyen/Spitsbergen/Norway, arrival 7.00 hrs ⚓ Charter flight Longyearbyen – Germany* Individual travel arrangements from Germany

⚓ = at anchor For prices, see the price insert from page 15.  
---- Ice conditions determine the course here (see map).

From Longyearbyen to Longyearbyen

5 Jul – 15 Jul 2024 10 days

INS2414

Fri 5 Jul	Individual travel arrangements to Germany Charter flight Germany* – Longyearbyen Longyearbyen/Spitsbergen/Norway, departure 19.00 hrs ⚓
Sat 6 – 14 Jul	Spitsbergen adventure: highlights with circumnavigation depending on the local conditions ⚓, see cruise INS2412/INS2415 (top)
Mon 15 Jul	Longyearbyen/Spitsbergen/Norway, arrival 7.00 hrs ⚓ Charter flight Longyearbyen – Germany* Individual travel arrangements from Germany

⚓ = at anchor For prices, see the price insert from page 15.  
---- Ice conditions determine the course here (see map).

\* Approximately six months before departure, you will be informed at which German airport the charter flight will take off and land.

The itinerary depends on official approval, weather and ice conditions. The natural experiences and wildlife sightings described are possibilities on these expeditions and are not guaranteed. The crew will endeavour to complete the circumnavigation of Spitsbergen on all four expeditions. The likelihood of a path opening up through the ice increases from week to week. Circumnavigation is not guaranteed.



THE ARCTIC

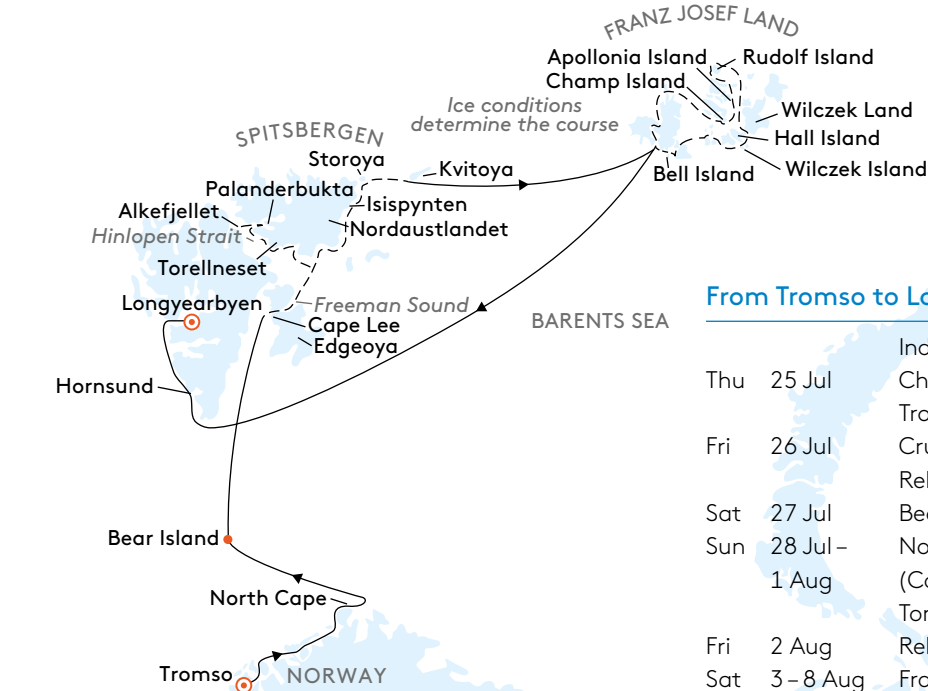




Expedition Franz Josef Land and north-east Spitsbergen · 25 Jul – 11 Aug 2024 · 17 days

## A PREMIERE WITH THE BEST OF TWO ARCTIC WORLDS

The time has come to write expedition history again. Hapag-Lloyd Cruises is adding another chapter to its story with a new pioneering feat that combines Franz Josef Land with north-east Spitsbergen for the very first time. A challenging route to extremely remote regions – and perhaps also a journey of self-discovery. Your course northwards starts with [cruising off North Cape](#). The first destination is a place of legend and fascination: Spitsbergen. Here, nature will dictate the route and the experiences in your explorer’s logbook, as you will find out on [Bear Island](#). Where will the rocky coastline allow you to land? Adventure and spontaneity are a quintessential part of the spirit of expedition on this cruise. [Cape Lee](#) gives you an insight into the life of former trappers and might even offer glimpses of reindeer. The flexible course heading north is determined by the untouched wilderness. Weather and ice conditions permitting, your ship will sail through the narrow Freeman Sound and unlock the door to further adventures with a passage through the Hinlopen Strait. If a Zodiac landing is possible in [Palanderbukta](#), you can get a feel for the isolation on a hike through the sparse tundra. The [Alkefjellet](#) cliffs come alive with thousands of breeding thick-billed murres. Walrus herds like to lie on the flat sandbanks of [Torellneset](#), where you can watch the creatures from a respectful distance. The crew of the HANSEATIC inspiration are always sounding out new ways to explore real uncharted territory with you – and this adventure is no exception. Will it be possible to make the first landing in [Isispynten](#) on the remote south-east side of



Nordaustlandet? [Storoya](#) is another difficult-to-reach place, where you can see many Arctic terns. The most remote island in the archipelago is [Kvitoya](#). Sometimes the odd polar bear will stray here, but humans are a rare sight. You will now join the few to have ventured here – previous visitors include the members of Andrée’s expedition in the 19th century, who are remembered by a memorial.

cy, isolated and remote – a thrilling expedition lies ahead on Franz Josef Land in the Arctic Ocean. The group of islands in the Russian Arctic is unfamiliar and out of reach for most people, but you will explore the archipelago in depth with the HANSEATIC inspiration. [Champ Island](#) reveals a geological wonder as you land with the Zodiacs and see the geodes – massive perfectly spherical stones measuring up to 3 m (9.8 ft) in diameter. Visit a former Soviet Arctic station dating back to the 1930s when you land in Tikhaya Bay. Cruising off Rubini Rock will reveal the striking basalt rocks where kittiwakes and thick-billed murres breed between colourful lichens. The glaciated south-east coast of [Wilczek Land](#) makes for a spectacular contrast. [Apollonov Island](#) is known for the walrus that often rest on its beach. The animals weigh around 1,000 kg (2,205 lb) and make an impressive sight, even from a respectful distance. Only the pack ice and the Arctic Ocean now lie between you and the North Pole as you reach the northernmost destination on your expedition, [Rudolf Island](#). The Payer-Weyprecht expedition landed on [Wilczek Island](#) in 1873, having discovered the archipelago. Now you too will follow their footsteps ashore. Massive glacier fronts, interrupted by protruding mountain plateaus, shape the terrain. The weather and ice will determine the course and guarantee unforgettable expedition experiences – including on [Hall Island](#) with Cape Tegetthoff. Here and throughout the cruise, you might be lucky enough to spot polar bears. The Zodiacs will take you to rocky needles created by volcanic activity and delicate carpets of moss with the yellow flowers of Arctic poppies. [Bell Island](#) takes its name from a bell-shaped mountain. Would you have expected to find the oldest building in the archipelago here? A wooden house built in 1881 in the vast wilderness of stone is a small sign of the civilisation to which you will return with many memories from this grand Arctic premiere.

### From Tromsø to Longyearbyen

Thu	25 Jul	Individual travel arrangements to Germany Charter flight Germany* – Tromsø Tromsø/Norway, departure 20.00 hrs
Fri	26 Jul	Cruising off North Cape Relaxation at sea
Sat	27 Jul	Bear Island/Norway ⚓
Sun	28 Jul – 1 Aug	North-east Spitsbergen/Norway ⚓ (Cape Lee, Palanderbukta, Alkefjellet, Torellneset, Isispynten, Storoya, Kvitoya)
Fri	2 Aug	Relaxation at sea
Sat	3 – 8 Aug	Franz Josef Land/Russia ⚓ (Champ Island, Wilczek Land, Apollonov Island, Rudolf Island, Wilczek Island, Hall Island, Bell Island)
Fri	9 – 10 Aug	Relaxation at sea
Sun	11 Aug	Longyearbyen/Spitsbergen/Norway, arrival 6.00 hrs ⚓ Charter flight Longyearbyen – Germany* Individual travel arrangements from Germany

⚓ = at anchor For prices, see the price insert from page 15.  
---- Ice conditions determine the course here (see map).

\*Approximately six months before departure, you will be informed at which German airport the charter flight will take off and land.

**Important note on this expedition:** this expedition is a very demanding cruise to organise and sail. All of our experience and careful preparation notwithstanding, the actual itinerary depends on official approvals and rules, as well as the weather and ice conditions, which may make it necessary to change the itinerary. The natural experiences and animal sightings described are possibilities and are not guaranteed. We will do everything in our power to ensure that this cruise takes place as advertised, but wish to inform you of the flexibility this requires. The captain will decide on the best possible alternative depending on local conditions.

### HIGHLIGHTS

- Premiere and pioneering spirit: two of the most remote island groups in the Arctic combined on one route for the first time
- Remote uncharted territory: the islands of Storoya and Kvitoya await in the north-east of Spitsbergen
- Far from civilisation: Franz Josef Land in the Russian Arctic – terra incognita
- The living Arctic: with luck, watch walrus, polar bears and whales from the deck and see reindeer and polar foxes ashore
- Active polar exploration – on many Zodiac rides and landings, plus hikes with your experts





Expedition Spitsbergen, Iceland and Greenland · 11 Aug – 29 Aug 2024 · 18 days

## A TRILOGY OF DREAM POLAR DESTINATIONS

With the highest ice class for passenger ships and a crew with polar experience, your expedition ship will chart a flexible course to the first of the three worlds of discovery on this cruise: Spitsbergen. Exhilarating days of expedition await you in the home of Arctic foxes and whales. The polar bear reigns here as the king of the Arctic and with a little luck, you'll be able to spot these creatures from a respectful distance. Watch sparkling ice formations as they drift past the ship on the mighty [Liefdefjord](#) and beyond. They are evidence of the Monacobreen, which calves into the inlet. A reverent silence will accompany your visit to the [Magdalenefjord](#) with its historic whalers' graves framed by an awesome backdrop. In the small town of [Ny-Alesund](#), you can feel the history of past adventures in the air – and questions of what the future will bring, as scientists are researching the consequences of climate change here. Marvel at the tongue of ice against dark mountains as you reach the [14th July Glacier](#) – another of the destinations on this route of exploration shaped by the ice conditions. Unforgettable wildlife sightings also await you on the small island of [Prins Karls Forland](#) where walrus like to relax on the gently sloping coastline and provide you with more great photo opportunities.

Nowhere else in Europe is the power of the earth more evident than in Iceland. Find out about typical life near the Arctic Circle in [Saudarkrokur](#). A visit to the fishing town of [Isafjordhur](#) transports you into the harshly beautiful Westfjords with deeply carved coasts and steep table



mountains. Explore the [Dynjandi waterfall](#)\* hidden in the mountains or embark on a [hike to the Troll's Seat](#)\*, the striking ridge above the city. The time [cruising off Latrabjarg](#) will be accompanied by thousands of puffins and guillemots that live on the cliffs brimming with birdlife. Leaving [Reykjavik](#), experience the power of nature with some active exploration. The [adventure on the Langjokull](#)\* is a fascinating insight into Iceland's second-largest ice cap and the hot springs of Deildartunguhver. Take a [flight over the island of fire and ice](#)\* with glaciers and volcanoes at your feet. [Ride Icelandic horses](#)\* across the surreal lava fields and hilly green landscapes.

Your small, manoeuvrable expedition ship is also perfect for the breathtaking natural backdrops of Greenland. As you follow the call of the Arctic, you'll start by heading to the remote south-east. Endemic vegetation and magnificent panoramic scenery welcome you to the shores of [Skjoldungen Sound](#) as you gaze out from the Zodiac. The experts will draw your attention away from the scenery of impressive mountain ranges to point out special features in the blossoming tundra. As you [cruise through Prince Christian Sound](#), colourful fishing huts will be reflected in the icy waters, which are fed by the glaciers. It's a good idea to keep your eyes and ears open during the expedition. A cry of "Whale up ahead!" could sound from the bridge at any time and the many open deck areas provide the best opportunities for sightings. In [Arsukfjord](#), weathered houses recall bygone times: this small mining settlement has been abandoned but provides a home to musk oxen which, with a little luck, you will see. After tranquillity and remoteness, [Nuuk](#) reveals its almost European charm between the modern centre and historic colonial harbour. The national museum explains Inuit history in interactive exhibition spaces. Back in the polar expanse, one of your Zodiac rides will showcase what is perhaps Greenland's greatest natural spectacle in icy [Disko Bay](#). The remarkable old town of [Sisimiut](#) provides a variety of insights. Learn about Inuit culture and whaling history from the 17th century in the "museum village" or trace the past with a hike on Tele Island. Pause in this remote place and reflect on your expedition: these three islands will stay with you forever.

### From Longyearbyen to Kangerlussuaq

INS2417

		Individual travel arrangements to Germany
Sun	11 Aug	Charter flight Germany** – Longyearbyen Longyearbyen/Spitsbergen/Norway, departure 19.00 hrs ⚓
Mon	12 – 15 Aug	Spitsbergen/Norway ⚓ (Liefdefjord, Magdalenefjord, Ny-Alesund, 14th July Glacier, Prins Karls Forland)
Fri	16 – 17 Aug	Relaxation at sea
Sun	18 – 19 Aug	North coast of Iceland (Saudarkrokur, Isafjordhur, cruising off Latrabjarg)
Tue	20 Aug	Reykjavik/Iceland, from 8.00 to 18.00 hrs
Wed	21 Aug	Relaxation at sea
Thu	22 Aug	South-east coast of Greenland ⚓ (Skjoldungen Sound)
Fri	23 Aug	Sailing through the Prins Christian Sound (depending on ice conditions)
Sat	24 – 28 Aug	West coast of Greenland ⚓ (Arsukfjord, Nuuk, Disko Bay, Sisimiut)
Thu	29 Aug	Kangerlussuaq/Greenland, arrival 6.00 hrs ⚓ Charter flight Kangerlussuaq – Germany** Individual travel arrangements from Germany

⚓ = at anchor For prices, see the price insert from page 16.

\*\*Approximately six months before departure, you will be informed at which German airport the charter flight will take off and land. The itinerary depends on official approval, weather and ice conditions. The natural experiences and wildlife sightings described are possibilities on this expedition and are not guaranteed.

### HIGHLIGHTS

- Three treasures of the far north: Spitsbergen, Iceland and Greenland combined on one expedition
- Pure pioneering spirit: experience great natural spectacles from a unique perspective in the Zodiacs
- Follow the call of the wild: wildlife watching in the kingdom of polar bears and whales
- Polar discoveries of the past and present: the courage and actions of former explorers and modern scientists
- Active experiences with hikes through the vast Arctic tundra

\*The shore activities are not included in the cruise price and are in the planning stage. Subject to change without notice.





Expedition Greenland, Newfoundland and St Lawrence River · 29 Aug – 16 Sep 2024 · 18 days

## LUSTROUS ICE AND LUSH GREEN FORESTS

What is life like in the Greenland Arctic and along Canada’s most famous river? Encounter the wonders of nature in the vast expanse – topped off with an adventure through the locks. The world’s largest island provides the prologue to your expedition. The HANSEATIC inspiration begins its expedition route in **Sisimiut** on Greenland’s western coast. Follow in the footsteps of the Saqqaa culture and visit the old town, which resembles a museum village. Hike from **Ilulissat** to the ice fjord, where glistening ice formations gather. This is just a taste of what awaits in **Disko Bay**, where glittering sculptures drift slowly through the water – with you at the centre as you cruise and take a Zodiac ride. With its octagonal church and the museum, the settlement of **Qeqertarsuaq**, which was founded in 1773, tells stories of modern life and the former whaling centre on Disko Island. Your ship will chart a flexible course through the **fjords of Greenland** amid majestic mountain ranges and the deeply carved coastline. The Zodiacs are put to good use here again. With a little luck, you might spot whales, surrounded by the colossal scenery. **Qassiarsuk** has an interesting history – this is where Erik the Red founded Greenland’s first Viking settlement in around 985. In **Unartoq**, round off your experiences by bathing in the hot springs as you watch the icebergs drift by.

Away from the usual routes, Canada’s sparsely populated east coast is a real insider’s tip. Newfoundland is an open book of eventful history, ranging from the indigenous people and the Vikings to European explorers. Trace the Icelandic/Greenlandic settlers as you explore the excavations at **L’Anse aux Meadows** independently. Afterwards head out from **Port au Choix** with your experts to explore the remnants of ancient cultures and hike through superb nature. The small town of **Norris Point** describes itself as a photographers’ paradise. **Hiking in Gros Morne National Park\*** between the mountains and coastline also reveals an array of varied sights with table mountains, fjords and lakes. Then a gigantic lifeline stretches before you: the **St Lawrence River**, North America’s mighty river system between the Atlantic and the Great Lakes at a length of almost 3,000 km (1,864 mi.).



As you travel along the river, the experts on board will tell you all about the great history – from the early Woodland period and the First Nations to the current economic significance. With a little luck, you’ll spot beluga, blue, humpback or fin whales whilst **whale watching\*** off **Tadoussac**. The visit to **Saguenay (La Baie)** is full of dramatic nature, with rugged mountains towering almost 400 m (1,312 ft) around this hiking paradise. The HANSEATIC inspiration will also take its time when **cruising on the Saguenay Fjord** to allow for potential whale sightings. Untouched wilderness meets savoir vivre in **Quebec**, where you can enjoy the contrasts of the French roots and Canadian sense of freedom on a **city walk with tea at Chateau Frontenac\***. The 80 m (262 ft) high **Montmorency Falls and Ile d’Orleans\*** are also something to look forward to. If you’re looking to take things up a notch, an **adventure through the locks** on the St Lawrence River is just the ticket. The HANSEATIC inspiration will scale seven locks with a height difference of up to 15 m (49 ft). You can watch the thrilling manoeuvres from the spacious decks during the day. After passing through the maze of the **Thousand Islands and cruising on Lake Ontario**, your adventure of rich contrasts comes to an end in **Toronto** – but your experiences will stay with you forever.

The itinerary depends on official approval, weather and ice conditions. The natural experiences and wildlife sightings described are possibilities on this expedition and are not guaranteed.

### From Kangerlussuaq to Toronto

INS2418

Thu	29 Aug	Individual travel arrangements to Germany Charter flight Germany** – Kangerlussuaq Kangerlussuaq/Greenland, departure 21.00 hrs ⚓
Fri	30 Aug – 3 Sep	West coast of Greenland ⚓ (Sisimiut, Ilulissat, Disko Bay, Qeqertarsuaq, Greenland’s fjords)
Wed	4 – 5 Sep	South coast of Greenland ⚓ (Qassiarsuk, Unartoq)
Fri	6 Sep	Relaxation at sea
Sat	7 – 9 Sep	Newfoundland/Canada ⚓ (L’Anse aux Meadows, Port au Choix, Norris Point)
Tue	10 Sep	Relaxation at sea (Gulf of Saint Lawrence) Arrival at St Lawrence River
Wed	11 Sep	Tadoussac/Canada, from 9.00 to 24.00 hrs ⚓
Thu	12 Sep	Saguenay (La Baie)/Canada Cruising in Saguenay Fjord
Fri	13 Sep	Quebec/Canada, from 8.00 to 18.00 hrs
Sat	14 Sep	Adventures along the locks: daytime passage through the seven locks of the St Lawrence River
Sun	15 Sep	Passage through the Thousand Islands Cruise on Lake Ontario
Mon	16 Sep	Toronto/Lake Ontario/Canada, arrival 7.00 hrs Individual travel arrangements from Toronto

⚓ = at anchor For prices, see the price insert from page 16.

\*\*Approximately six months before departure, you will be informed at which German airport the charter flight will take off.

### HIGHLIGHTS

- The small HANSEATIC inspiration is perfect for days of adventures on both side of the Arctic Circle – from Greenland’s icy world to North America’s wilderness
- The natural wonder of Disko Bay: admire glittering icebergs from the deck and the Zodiacs
- Canada’s best-kept secret: Newfoundland’s boundless wilderness with fjords and lakes
- The stories of the Vikings, Inuits and First Nations
- Exciting manoeuvres through seven locks on the St Lawrence River

\*The shore activities are not included in the cruise price and are in the planning stage. Subject to change without notice.



## GREAT LAKES







Great Lakes · 16 Sep – 29 Sep 2024 · 13 days

# THE OCEAN IN THE WILDERNESS

With a total area of around 244,000 km<sup>2</sup> (94,209 mi.<sup>2</sup>), the Great Lakes dominate the North American landscape. Filled with a passionate spirit of discovery that once led settlers to this region, this cruise takes you deep into a natural wonder of Canada and the USA. The HANSEATIC inspiration features retractable bridge wings so that it can pass through the locks between the lakes. These feats of nautical brilliance are beyond the capabilities of most ships. Eight locks, around 20 bridges and a change in height of approximately 100 m (328 ft): this route demands millimetre precision from the captain and crew. Watch the exciting manoeuvres from the many open deck spaces. Then the route is clear – before you lies vast Lake Erie and the magnificent passage on the Detroit River to the Canadian city of Windsor. From the ship, you'll have the best view of the skyline of America's former "Motor City" on the other bank of the river. Visit Detroit\* to discover the roots of automotive history and the varied architecture of this city that is once again on the up. Follow in the footsteps of Henry Ford\* at the museum that bears his name and see masterpieces of the road and rails. Maritime charm awaits you on your cruise on Lake Huron to the fishing town of Tobermory on Georgian Bay. Let your impressions be shaped by limestone coastlines, small bays and Canadian flora on an individual walk along the Bruce Trail. A scenic approach through a small lagoon brings you to Parry Sound, which lies in a watery labyrinth with a distinctly Scandinavian feel. The marine walking trails are a great way to explore this town named after the polar explorer William E. Parry and the nearby lake shore. The

spellbinding views on a boat trip of the Thirty Thousand Islands\* illustrate why the town is known as the gateway to the archipelago, as narrow channels lead past imposing limestone cliffs to hidden natural treasures. Alternatively, immerse yourself in a panoramic scene in Killbear Provincial Park\* where the pink granite banks merge with the autumnal forest. The island-studded scenery around Killarney welcomes you with unspoilt nature that harks back to the time of the first trappers. The small coastal municipality is still an El Dorado for outdoor activities.

To experience vibrant culture surrounded by magnificent nature, you'll continue to Sault Sainte Marie, where you can walk to the historic locks or visit the bushplane museum. The city is divided by a river that also marks the international border. On the shores of the world's largest freshwater lake, Lake Superior, you'll set foot on American soil in Duluth. A city tour\* with visit to the old rail depot will bring the history of European immigrants to life. Roaring waterfalls and high cliffs connect the Gooseberry Falls and the Split Rock Lighthouse\*, which was built in 1910. Mackinac Island is a natural jewel of the Great Lakes and is one of the most beautiful islands in the USA. Discover the small car-free idyll independently by bicycle or with a carriage ride. While Victorian villas and the Grand Hotel recall the 19th century, Fort Mackinac serves as a reminder of the American Revolutionary War. The old blast furnaces in Fayette were built in the same century and tell the story of what was once one of the most productive iron smelters in the region. A vibrant cultural scene has developed in

Milwaukee, which was once a centre of brewing. The city tour with a visit to the Milwaukee Art Museum\* sheds light on the influence of the German immigrants of days gone by. One particular brand that was founded here has had an impact on the American way of life like no other – find out more at the Harley-Davidson Museum\*. Further south, you have the option to visit Chicago\* with its interesting mix of huge skyscrapers, diverse architecture and beaches and parks right on the shore of Lake Michigan. The diversity of the Great Lakes will bring your American dream to life on this cruise into the heart of North America with the HANSEATIC inspiration.



## From Toronto to Milwaukee

		Individual travel arrangements to Toronto
Mon	16 Sep	Toronto/Lake Ontario/Canada
		Overnight stay on board
Tue	17 Sep	Toronto, departure 1.00 hrs
Wed	18 Sep	Windsor/Detroit River/Canada, from 7.30 to 19.00 hrs
Thu	19 Sep	Cruise on Lake Huron Tobermory/Lake Huron/Canada, from 13.00 to 19.00 hrs ⚓
Fri	20 Sep	Parry Sound/Canada, from 8.00 to 18.00 hrs
Sat	21 Sep	Killarney/Canada, from 7.00 to 14.00 hrs ⚓
Sun	22 Sep	Sault Sainte Marie/St Mary's River/Canada, from 7.00 to 12.00 hrs
Mon	23 Sep	Cruise on Lake Superior
Tue	24 Sep	Duluth/Lake Superior/USA, from 6.00 to 18.00 hrs
Wed	25 Sep	Cruise on Lake Superior
Thu	26 Sep	Mackinac Island/Lake Huron/USA, from 7.00 to 18.00 hrs ⚓
Fri	27 Sep	Fayette/Lake Michigan/USA, from 7.00 to 12.00 hrs
Sat	28 Sep	Milwaukee/Lake Michigan/USA, arrival 8.00 hrs Overnight stay on board
Sun	29 Sep	Individual travel arrangements from Milwaukee

⚓ = at anchor For prices, see the price insert from page 16.

The itinerary depends on official approval. Please note that the use of Zodiacs is currently not permitted on the Great Lakes.

## HIGHLIGHTS

- American dream for fans of nature and culture – thrilling experiences and insights converge on the lakes
- Experience the HANSEATIC inspiration manoeuvring through the locks
- Autumn magic: nature prepares for the spectacle of the Indian summer
- Journey through time on the shores – from reminders of the American Revolutionary War to historic villas from the 19th century
- Outdoor activities in the spirit of trappers and settlers





Great Lakes · 29 Sep – 12 Oct 2024 · 13 days

# THE GREAT MASTERPIECE OF THE GREAT LAKES

Amid the lake landscapes masterfully painted by North America, the HANSEATIC inspiration blends lush nature, vivid stories of settlers and exciting lock experiences. Like an eighth ocean, the Great Lakes stretch between the USA and Canada, framed by magnificent nature, homely coastal towns and living cultural history. This cruise combines all five lakes in one magnificent experience, which starts on Lake Michigan. Once a centre of brewing, **Milwaukee** now has a vibrant cultural scene. The **Harley-Davidson Museum**\* explains how this vehicle – which is an unmissable feature of the American way of life – originated here and gained worldwide fame. Alternatively, explore the **city of architecture, Chicago**\* on the shores of Lake Michigan – during a day excursion from Milwaukee. In the 19th century, **Fayette** drove industrialisation with one of the region’s most productive iron smelters at the time. Find out what it was like to work at the blast furnaces and live in the historic wooden buildings with a journey back in time. Back on board, you’ll head for a true gem in Lake Huron: **Mackinac Island**. Explore the car-free island at your own pace by bicycle, horse-drawn carriage or on foot before delving into the fascinating history of the American Revolutionary War at Fort Mackinac.

The Soo Locks near Sault Sainte Marie separate the USA and Canada. They will open a gateway for you to explore the destinations of Lake Superior. On the shores of the world’s largest freshwater lake, you’ll be greeted by the American city of **Duluth**. A **city tour**\* provides insights into a living picture book of times gone by and the fascinating

details of the history of European immigrants are brought to life at the old rail depot. Enjoy the scenery at **Gooseberry Falls and the Split Rock Lighthouse**\* – as water cascades down the stony steps of the Gooseberry River, the light-house built in 1910 keeps watch from the cliff. With these impressions in your mind, you will reach the Canadian **Thunder Bay** with its enchanting coastal landscapes. Climb the local landmark made up of a flat-topped mountain ridge with dramatic granite cliffs on a **hiking adventure in Sleeping Giant Provincial Park**\*. Watch water’s elemental force at work in the “Niagara Falls of the north” as you visit **historic Fort William and Kakabeka Falls**\*. The water here plunges nearly 40 m (131 ft) into the Kaministiquia River – an amazing natural spectacle. As you **cruise on Lake Superior**, enjoy the relaxing views or learn interesting details about the First Nations from your experts on board before passing through the Soo Locks near Sault Sainte Marie again.

The name of the small coastal municipality of **Killarney** reveals its Irish roots. The “emerald isle” of George Island can be reached by ferry and will show off its colourful side in autumn. Exploring the uninhabited island is just one of the many outdoor activities that you can enjoy here. It is the unforgettable feeling of freedom that makes the area around **Parry Sound** so charming – as demonstrated beautifully by a **boat trip of the Thirty Thousand Islands**\*. The fishing village of **Tobermory** can be found in a small bay on Lake Huron. Surrounded by this tranquil idyll, while away the time in the shops around the picturesque harbour or



### From Milwaukee to Toronto

INS2420

Sun	29 Sep	Individual travel arrangements to Milwaukee Milwaukee/Lake Michigan/USA Overnight stay on board
Mon	30 Sep	Milwaukee, departure 18.00 hrs
Tue	1 Oct	Fayette/USA, from 14.00 to 19.00 hrs ⚓
Wed	2 Oct	Mackinac Island/Lake Huron/USA, from 7.00 to 15.00 hrs ⚓
Thu	3 Oct	Cruise on Lake Superior
Fri	4 Oct	Duluth/Lake Superior/Canada, from 7.00 to 18.00 hrs
Sat	5 Oct	Thunder Bay/Lake Superior/Canada, from 9.00 to 20.00 hrs
Sun	6 Oct	Cruise on Lake Superior and Lake Huron
Mon	7 Oct	Killarney/Lake Huron/Canada, from 8.30 to 19.00 hrs ⚓
Tue	8 Oct	Parry Sound/Canada, from 8.30 to 17.30 hrs
Wed	9 Oct	Tobermory/Canada, from 7.00 to 14.00 hrs ⚓
Thu	10 Oct	Windsor/Detroit River/Canada, from 8.00 to 19.00 hrs
Fri	11 Oct	Cruise on Lake Erie
Sat	12 Oct	Toronto/Lake Ontario/Canada, arrival 8.00 hrs Individual travel arrangements from Toronto

⚓ = at anchor      For prices, see the price insert from page 16.

The itinerary depends on official approval. Please note that the use of Zodiacs is currently not permitted on the Great Lakes.

hike through the forests to the rocky coastline on the Bruce Trail. The industrial history of **Windsor** is overshadowed by its neighbour on the American side of the Detroit River – the “Motor City”. The skyline of **Detroit**\* heralds exciting insights into the rise, fall and reinvention of the legendary car-making city. **Follow in the footsteps of Henry Ford**\* at the museum that bears his name and see masterpieces of the road and rails from days gone by. Alternatively, experience the city’s many faces and history for yourself on an active and sustainable **bicycle tour of Detroit**\* past Belle Isle Park and with a visit to Eastern Market. After **cruising on Lake Erie**, it’s time for this journey to come to an end with the passage of the Welland Canal – after eight locks, around 20 bridges and a change in height of 100 m (328 ft), your memories of the Great Lakes will be just as unique as their untamed magic.



- ### HIGHLIGHTS
- All five lakes as one great experience – an adventure of vast shores and wild forests
  - Experience the locks on board as the HANSEATIC inspiration passes through with flying colours
  - Feel the spirit of discovery and great freedom amidst the wildly romantic nature of North America
  - Explore culture – from the indigenous people, the First Nations, to the settlers and the modern day
  - Architecture that tells stories, with contrasts ranging from Victorian villas to skyscrapers

\*The shore activities are not included in the cruise price and are in the planning stage. Subject to change without notice.