

OCTOBER 2025 - SEPTEMBER 2026

# | MS EUROPA 2 |

INCLUDED SERVICES, FARES, PRICE EXAMPLES,  
VACCINATION, IMMIGRATION AND VISA REQUIREMENTS



FREEDOM THAT  
TAKES YOU PLACES.



HAPAG <sup>18</sup>/<sub>91</sub> LLOYD  
CRUISES

TECHNICAL DATA

BUILT	2013
CATEGORY	5 stars*
GROSS TONNAGE (GT)	42,830
SHIPYARD	STX Europe, St-Nazaire, France
LENGTH	225.38 m (739.44 ft)
BEAM	26.70 m (87.60 ft)
DRAUGHT	6.30 m (20.67 ft)
TOTAL POWER	24,000 kW
SPEED	21 knots
STABILISERS	Blohm + Voss, 2x 14 m² (2x 151 ft² wing area)
PASSENGER DECKS	7
PASSENGER CAPACITY	516
CREW	> 370
ON-BOARD LANGUAGES	German and English

ZODIACS (motorised inflatable rubber boats)	12
TENDERS (150 seats)	4
HOSPITAL	yes
SUITES	251 in total
VERANDA SUITES	141
OCEAN SUITES	59
FAMILY APARTMENTS	7
GRAND OCEAN SUITES	16
PENTHOUSE SUITES**	24
GRAND PENTHOUSE SUITES	2
OWNER SUITES	2

\* According to Insight Guides 2024.  
\*\* Two of these with fully accessible layout and equipment.

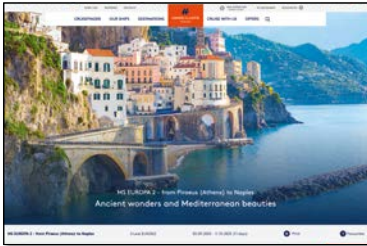
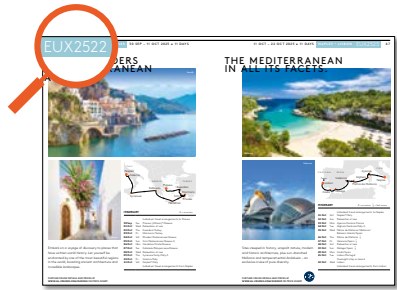
JOIN US ON BOARD IN JUST A FEW CLICKS



WELCOME

We know how important it is to keep up to date with the latest information, availability and prices so that you can plan your dream cruise. That's why we want to show you the quickest way to book your next luxury cruise online. For all the latest information, availability and prices, simply enter the cruise number of your preferred cruise directly in the address bar of the browser window on our website: **www.hl-cruises.com/CRUISENUMBER**. This simple step gives you access to all the important details and allows you to manage your travel plans effortlessly. Look forward to unforgettable moments.

IT'S EASY TO FIND YOUR CRUISE NUMBER



All information and prices relating to your cruise can be found at **www.hl-cruises.com/CRUISENUMBER**

# BOOKING MODULES

Would you like to discover the dream destinations of our world with the EUROPA 2? Our booking modules make it easy for you to put together a cruise that meets your individual wishes.

1

## TIME OF YEAR AND TRAVEL REGION

The first step is to decide when you would like to travel and which region you would like to explore with us.

2

## YOUR CRUISE

Now select your personal dream cruise. Each of our cruises has an individual cruise number. The four digits of this number are made up of the year and a consecutive numbering system. You will find this number on the cruise pages of the catalogue and on the Internet.

3

## EARLY BOOKING DISCOUNT

If you book your cruise in good time, you can look forward to an attractive discount. Further details can be found in the tables with the price examples from page 14 onwards as well as online on the relevant cruise page.

4

## SUITE

How would you like to live on board the EUROPA 2? Choose your preferred home at sea from our seven elegant suite types.

5

## FARE

Next choose the fare that best suits your personal travel plans. Please refer to the table on page 7 to find out which services are included in each fare.

6

## NUMBER OF PEOPLE

Now specify how many people you are travelling with and whether there are any children or young people among them.

7

## ARRIVAL AND DEPARTURE PACKAGES

Depending on the respective cruise, you have two options when planning your arrival and departure: book the convenient arrival and departure package from Hapag-Lloyd Cruises (from/to German, Austrian or Swiss airports), or organise your arrival and departure individually.

8

## PRE- AND POST-CRUISE PROGRAMMES

Would you like to experience even more before or after your cruise? Then extend your cruise with our attractive pre- and post-cruise programmes (depending on the respective cruise) and look forward to unforgettable impressions. Please note that all pre- and post-cruise programmes are conducted in German.

9

## COMBINATION DISCOUNT

If you combine selected consecutive cruises, you benefit from our attractive combination discount in the PLATINUM fare. See how much you can save in each case in the tables with the price examples from page 14 onwards.

10

## INDIVIDUAL TRAVEL ARRANGEMENTS

To fulfil your personal wishes, our travel concierge is happy to offer you individual shore arrangements and pre- and post-cruise programmes. We also offer comprehensive golf packages for our Golf & Cruise voyages.

# ALL-ROUND HOLIDAY BLISS: OUR INCLUDED SERVICES

You are a guest on board. This means, of course, that the cruise price already includes a number of luxuries: from perfect service in your suite to an extensive entertainment programme and the exquisite creations of the chefs in our gourmet restaurants.

## IN YOUR SUITE

- › Champagne on the day you arrive.
- › Mini bar, refilled on a daily basis.
- › Nespresso machine.
- › 24-hour suite service.
- › Butler service in the Penthouse, Grand Penthouse and Owner Suites.
- › Guest portal with a wide range of entertainment and information options and a personal EUROPA 2 email account.

## RESTAURANTS

- › Exclusive gourmet restaurants at no extra cost, with flexible mealtimes and no fixed seating plans.
- › Full board: breakfast, late-riser breakfast, lunch and dinner, pastries and snacks.
- › Tea and coffee specialities.

## RELAXATION & FITNESS

- › OCEAN SPA and fitness area covering an area of 1,000 m² (10,764 ft²).
- › Extensive range of indoor and outdoor sports classes, either inside or in the open air.
- › Four saunas and state-of-the-art training equipment.

## FAMILIES

- › Comprehensive programme of games and sports as well as arts and crafts for children from 4 years of age and for teens.
- › Baby welcome package for parents with babies and small children up to 3 years of age.
- › Children up to and including 11 years of age travel free in the suite of their parents or other full-paying guardians.

## ENTERTAINMENT

- › A different entertainment programme every day with presentations, concerts, workshops, and a high-quality programme (e.g. with live shows or readings).
- › Free use of the Internet\* on board.

## SEE MORE, EXPERIENCE MORE

- › Available for free hire: bicycles (subject to official approval) and snorkelling equipment.
- › Zodiac rides (depending on the route and weather conditions) and landings or tours in the on-board Zodiacs or tenders.

## CANCELLATION FEE INSURANCE EXCLUSIVELY WITH PLATINUM AND GOLD FARES

- › Cancellation fee insurance is already included in the cruise prices of the PLATINUM and GOLD fares. For further information, see page 21.

\*One hour per guest and day. Further information and terms and conditions at [www.hl-cruises.com/internet](http://www.hl-cruises.com/internet)

# PERFECT FOR YOUR TRAVEL PLANS – OUR THREE FARES

	PLATINUM Can be booked at any time	GOLD Limited	SILVER Only subject to availability
SERVICES			
Suite/cabin and deck	Free choice of suite/cabin and deck	Hapag-Lloyd Cruises chooses suite/cabin and deck at the beginning of the cruise	Hapag-Lloyd Cruises chooses suite/cabin and deck at the beginning of the cruise
Shore excursions	Shore excursions bookable after their publication	Shore excursions bookable after their publication	Shore excursions bookable 14 days after their publication
Cancellation fee insurance	yes (20 % excess)	yes (20 % excess)	–
Early booking discount	yes (depending on booking date)	yes (depending on booking date)	–
Deposit when booking	20 % must be paid up to 365 days prior to departure 25 % must be paid between the 364th and 181st day prior to departure 30 % must be paid from the 180th day prior to departure Must be paid immediately within 30 days prior to departure	20 % must be paid up to 365 days prior to departure 25 % must be paid between the 364th and 181st day prior to departure 30 % must be paid from the 180th day prior to departure Must be paid immediately within 30 days prior to departure	40 % must be paid up to 365 days prior to departure 45 % must be paid between the 364th and 181st day prior to departure 50 % must be paid from the 180th day prior to departure Must be paid immediately within 30 days prior to departure
Combination discount	yes (depending on offer)	–	–
Discounts for children	yes	yes	yes
Travel package to and from arrival and departure points	at a surcharge (depending on offer)	at a surcharge (depending on offer)	at a surcharge (depending on offer)
Pre- and post-cruise programmes (conducted in German)	at a surcharge (depending on offer)	at a surcharge (depending on offer)	at a surcharge (depending on offer)
Golf & Cruise package	at a surcharge (depending on offer)	at a surcharge (depending on offer)	at a surcharge (depending on offer)
Travel concierge	at a surcharge	at a surcharge	at a surcharge
THE INCLUDED SERVICES ARE CONTAINED IN ALL FARES			



All information and prices relating to your cruise can be found at [www.hl-cruises.com/CRUISENUMBER](http://www.hl-cruises.com/CRUISENUMBER)

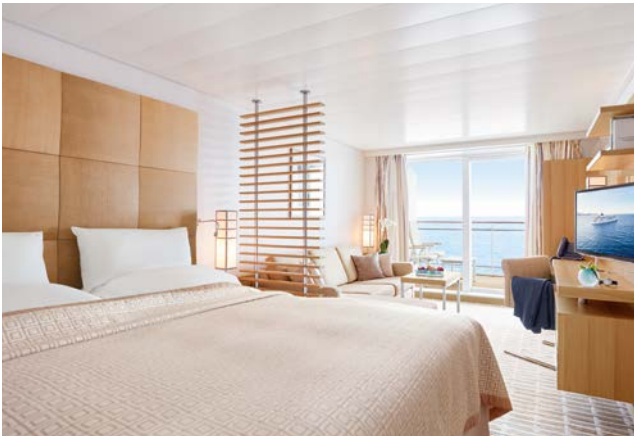
ALL SUITES AT A GLANCE

Of course, you will enjoy conveniences such as a free mini bar or our 24-hour suite service in all suites on board. You can also look forward to other privileges and features in the various suite categories.

	VERANDA SUITE	OCEAN SUITE	FAMILY APART-MENT	GRAND OCEAN SUITE	PENT-HOUSE SUITE	GRAND PENT-HOUSE SUITE	OWNER SUITE
	Categories 1-5	Categories 1-4	Category 12	Categories 6-7	Categories 8-9	Category 10	Category 11
LIVING							
Living area in m² (ft²) – approx.	28 (301)	28 (301)	2x 20 (2x 215)	42 (452)	42 (452)	78 (840)	99 (1,066)
Veranda in m² (ft²)	7 (75)	7 (75)	2x 7 (2x 75)	10 (108)	10 (108)	10 (108)	15 (161)
Separate living and sleeping areas	-	-	-	-	-	✓	✓
Separate dining table	-	-	-	-	-	✓	✓
Daybed	-	-	-	-	-	✓	✓
Walk-in wardrobe	✓	-	-	-	✓	✓	✓
Selection of spirits in the mini bar included	-	-	-	✓	✓	✓	✓
BATHROOM							
Bathroom with two sinks	-	✓	-	✓	✓	✓	✓
TV in the bathroom area	-	-	-	-	-	✓	✓
Whirlpool (1), bathtub (2), Whirlpool tub (3)	2	3	2	3	3	1	1
Shower with rain shower (1), rain shower with steam sauna (2)	1	1	1	2	1	2	2
Natural light in the bathroom	-	✓	-	✓	-	✓	✓
Separate toilet	-	✓	✓	✓	✓	✓	✓
Additional guest toilet	-	-	-	-	-	✓	✓
SERVICE							
Butler service (1) 24-hour suite service (2)	2	2	2	2	1/2	1/2	1/2
SERVICE PRIVILEGES							
Welcome champagne	✓	✓	✓	✓	✓	✓	✓
Privileged table reservation in all restaurants	-	-	-	-	-	✓	✓
Free Internet access*: one hour per guest per day (1), no time limit (2)	1	1	1	1	1	2	2

\*You can find more detailed information on Internet use on board at [www.hl-cruises.com/internet](http://www.hl-cruises.com/internet)

YOUR HOME ON BOARD



VERANDA SUITE 35 M² (376 FT²) CAT. 1-5

- › Living area: 28 m² (301 ft²); veranda: 7 m² (75 ft²).
- › Walk-in wardrobe.
- › Exclusive living area with a chaise longue.
- › Bathtub and separate shower.
- › Free mini bar.



OCEAN SUITE 35 M² (376 FT²) CAT. 1-4

- › Living area: 28 m² (301 ft²); veranda: 7 m² (75 ft²).
- › Natural light in the bathroom.
- › Bathroom with two sinks.
- › Whirlpool tub and separate shower.
- › Separate toilet.
- › Free mini bar.



FAMILY APARTMENT 2X 27 M² (2X 290 FT²) CAT. 12

- › Living area: 2x 20 m² (2x 215 ft²); veranda: 14 m² (150 ft²), divisible into 2x 7 m² (2x 75 ft²).
- › Connecting doors between the rooms and the verandas.
- › Separate toilets.
- › Free mini bars.



The furniture of one of the living areas has been tailored especially for our younger passengers:

- › Two twin beds, one of which is a Pullman (80 x 200 cm [2.6 x 6.5 ft]).
- › Bathtub (140 x 80 cm [4.6 x 2.6 ft]).
- › Age-appropriate range of toys and games, including a games console.

# YOUR HOME ON BOARD

GRAND OCEAN SUITE 52 M² (560 FT²) CAT. 6-7



- › Living area: 42 m² (452 ft²); veranda: 10 m² (108 ft²).
- › Bathroom with two sinks.
- › Separate toilet.
- › Natural light in the bathroom.
- › Shower with steam sauna.
- › Whirlpool tub.
- › Free mini bar.

PENTHOUSE SUITE 52 M² (560 FT²) CAT. 8-9



- › Living area: 42 m² (452 ft²); veranda: 10 m² (108 ft²).
- › Walk-in wardrobe.
- › Bathroom with two sinks.
- › Whirlpool tub and separate shower.
- › Separate toilet.
- › Butler service.
- › Free mini bar.

A Penthouse Suite with fully accessible layout and equipment can also be booked (Category 13). Here the toilet is in the bathroom.

GRAND PENTHOUSE SUITE 88 M² (948 FT²) CAT. 10



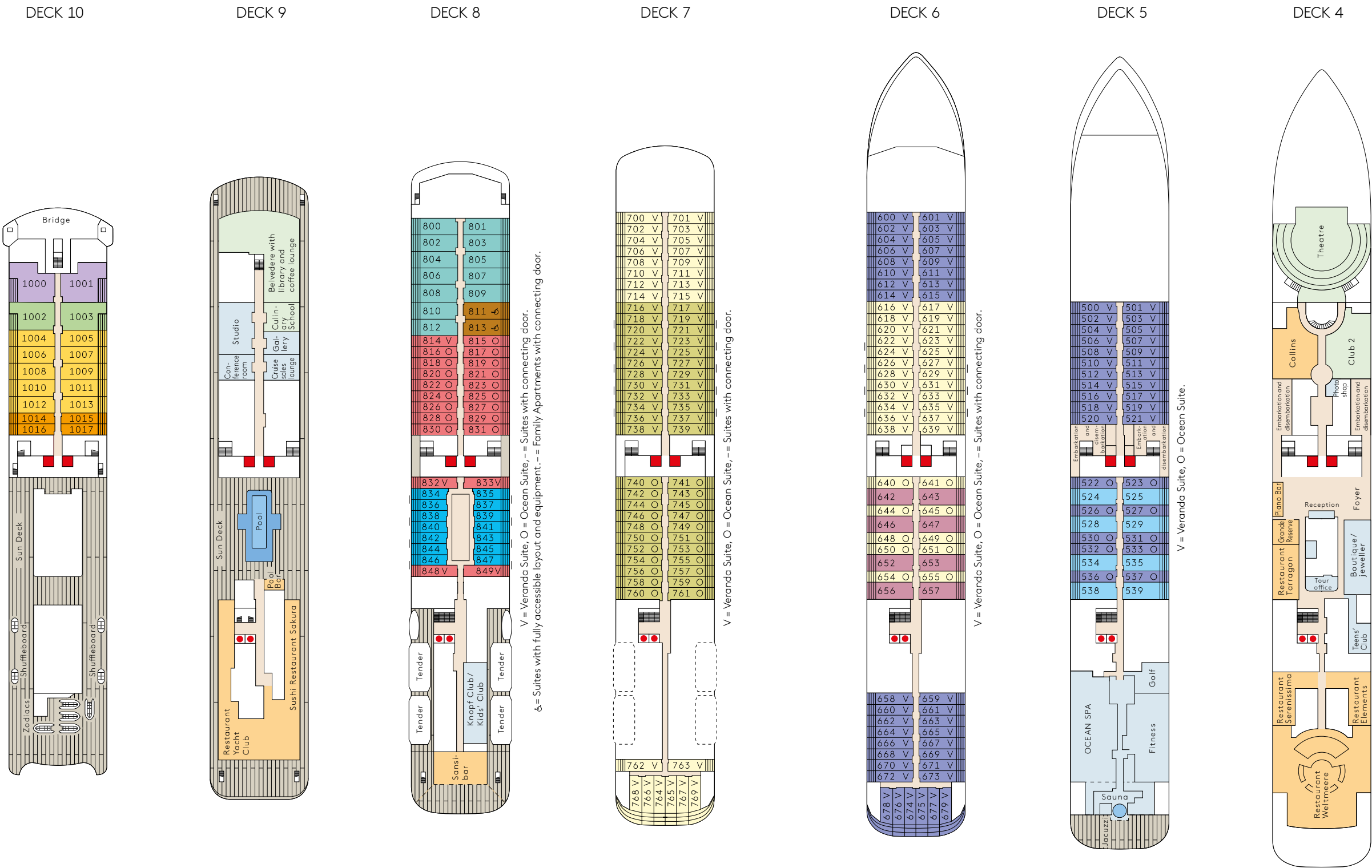
- › Living area: 78 m² (840 ft²); veranda: 10 m² (108 ft²).
- › Separate living and sleeping areas.
- › Separate dining table.
- › Guest toilet.
- › Bathroom with two sinks.
- › Shower with steam sauna.
- › Whirlpool and daybed in the bathroom.
- › Butler service.
- › Free mini bar.
- › Exclusive service privileges (see page 8).

OWNER SUITE 114 M² (1,227 FT²) CAT. 11



- › Living area: 99 m² (1,066 ft²); veranda: 15 m² (161 ft²).
- › Separate living and sleeping areas.
- › Separate dining table.
- › Guest toilet.
- › Bathroom with two sinks.
- › Shower with steam sauna.
- › Whirlpool and daybed in the bathroom.
- › Butler service.
- › Free mini bar.
- › Exclusive service privileges (see page 8).

DECK PLAN



Veranda Suite or Ocean Suite (approx. 35 m²/376 ft²)

Cat. 1

Cat. 2

Cat. 3

Cat. 4

Veranda Suite (approx. 35 m²/376 ft²)

Grand Ocean Suite (approx. 52 m²/560 ft²)

Cat. 5

Cat. 6

Grand Ocean Suite (approx. 52 m²/560 ft²)

Penthouse Suite (approx. 52 m²/560 ft²)

Cat. 7

Cat. 8

Penthouse Suite (approx. 52 m²/560 ft²)

Grand Penthouse Suite (approx. 88 m²/948 ft²)

Cat. 9

Cat. 10

Owner Suite (approx. 114 m²/1,227 ft²)

Family Apartment (approx. 2x 27 m²/ 2x 290 ft²)

Cat. 11

Cat. 12

Penthouse Suite fully accessible (approx. 52 m²/560 ft²)

Cat. 13

- V Veranda Suite
- O Ocean Suite
- Suites with connecting door
- ♿ Suites with fully accessible layout
- Non-public area
- Restaurants and bars
- Entertainment area
- Lift
- Glass lift

- The tender stations are located on Deck 3.
- The suites 501 – 513 (odd numbers) above the Club 2 may be subject to a slight noise disturbance as a result of the entertainment programme.
- The suites 762 – 769 underneath the Sansibar may be subject to a slight noise disturbance as a result of the entertainment programme.

PRICE EXAMPLES IN EUROS (€), CATEGORY 1

CRUISE NO.	PORT OF DEPARTURE – PORT OF ARRIVAL	DAYS	CRUISE DATES	PRICE PER PERSON €	SAVINGS PER PERSON €			SPECIAL TRAVEL INFORMATION	
			Cruise only	Cruise only, PLATINUM fare, Category 1 (double occupancy)	Early booking until	Discount	Combination discount	Format/Theme/Special	
EUX2522	Piraeus (Athens) – Naples	11	30 Sep – 11 Oct 2025	6,990	30 Sep 2024	–400	–	–900	GOLF & CRUISE, FAMILY
EUX2523	Naples – Lisbon	11	11 Oct – 22 Oct 2025	6,990	11 Oct 2024	–400	–900		
EUX2524	Lisbon – Lisbon	11	22 Oct – 02 Nov 2025	6,990	22 Oct 2024	–400		–900	FAMILY
EUX2525	Lisbon – Tenerife	11	02 Nov – 13 Nov 2025	6,990	02 Nov 2024	–400	–1,500		
EUX2526	Tenerife – Curacao	15	13 Nov – 28 Nov 2025	9,990	13 Nov 2024	–600		–1,500	IN2BALANCE
EUX2527	Curacao – New York	12	28 Nov – 10 Dec 2025	8,990	28 Nov 2024	–400	–900		
EUX2528	New York – New York	10	10 Dec – 20 Dec 2025	7,190	10 Dec 2024	–400		–1,500	GOLF & CRUISE, FAMILY
EUX2600	New York – Colon	19	20 Dec 2025 – 08 Jan 2026	14,990	20 Dec 2024	–700	–2,000		
EUX2601	Colon – Los Angeles	17	08 Jan – 25 Jan 2026	10,990	08 Jan 2025	–600		–2,000	GOLF & CRUISE
EUX2602	Los Angeles – Tahiti	20	25 Jan – 14 Feb 2026	12,890	25 Jan 2025	–700	–2,500		
EUX2603	Tahiti – Valparaiso	20	14 Feb – 06 Mar 2026	13,990	14 Feb 2025	–700		–2,500	IN2BALANCE
EUX2604	Valparaiso – Rio de Janeiro	21	06 Mar – 27 Mar 2026	13,590	06 Mar 2025	–800	–2,500		
EUX2605	Rio de Janeiro – Tenerife	15	27 Mar – 11 Apr 2026	8,290	27 Mar 2025	–600		–21,000 <sup>1</sup>	IN2BALANCE
EUX252605	Tenerife – Tenerife	149	13 Nov 2025 – 11 Apr 2026	79,910	13 Nov 2024	–5,500	–21,000 <sup>1</sup>		
EUX2606	Tenerife – Tenerife	10	11 Apr – 21 Apr 2026	6,290	11 Apr 2025	–400		–900	–2,000
EUX2607	Tenerife – Bilbao	12	21 Apr – 03 May 2026	7,690	21 Apr 2025	–400	–900		
EUX2608	Bilbao – Hamburg	12	03 May – 15 May 2026	7,590	03 May 2025	–400		–900	
EUX2609	Hamburg – Hamburg	14	15 May – 29 May 2026	8,390	15 May 2025	–500	–900		GOLF & CRUISE
EUX2610	Hamburg – Hamburg	13	29 May – 11 Jun 2026	7,890	29 May 2025	–500		–600	
EUX2611	Hamburg – Kiel	3	11 Jun – 14 Jun 2026	2,190	11 Jun 2025	–200	–600		
EUX2612	Kiel – Hamburg	12	14 Jun – 26 Jun 2026	7,390	14 Jun 2025	–400		–7,000 <sup>1</sup>	CRUISE COMBINATION <sup>1</sup>
EUX260612	Tenerife – Hamburg	76	11 Apr – 26 Jun 2026	40,430	11 Apr 2025	–2,800	–7,000 <sup>1</sup>		
EUX2613	Hamburg – Hamburg	14	26 Jun – 10 Jul 2026	8,590	26 Jun 2025	–500		–900	–
EUX2616	Hamburg – Malaga	13	14 Jul – 27 Jul 2026	8,290	14 Jul 2025	–500	–	–900	GOLF & CRUISE, FAMILY
EUX2617	Malaga – Monte Carlo	9	27 Jul – 05 Aug 2026	5,990	27 Jul 2025	–300	–900		
EUX2618	Monte Carlo – Civitavecchia (Rome)	11	05 Aug – 16 Aug 2026	7,290	05 Aug 2025	–400		–900	FAMILY
EUX2619	Civitavecchia (Rome) – Dubrovnik	9	16 Aug – 25 Aug 2026	5,990	16 Aug 2025	–300	–900		
EUX2620	Dubrovnik – Piraeus (Athens)	12	25 Aug – 06 Sep 2026	7,890	25 Aug 2025	–400		–900	FAMILY
EUX2621	Piraeus (Athens) – Istanbul	10	06 Sep – 16 Sep 2026	6,690	06 Sep 2025	–400	–900		
EUX2622	Istanbul – Piraeus (Athens)	12	16 Sep – 28 Sep 2026	7,890	16 Sep 2025	–400		–	



For more detailed information about the special travel formats, visit [www.hl-cruises.com/specialtravelformats](http://www.hl-cruises.com/specialtravelformats)

Exchange rate: USD 1.10 = € 1.00

<sup>1</sup>The combination discount is already included in the prices for the cruise combinations. No additional offers, reductions or discounts are applicable.

PRICE EXAMPLES IN US DOLLARS (USD), CATEGORY 1

CRUISE NO.	PORT OF DEPARTURE – PORT OF ARRIVAL	DAYS	CRUISE DATES	PRICE PER PERSON USD	SAVINGS PER PERSON USD			SPECIAL TRAVEL INFORMATION	
			Cruise only	Cruise only, PLATINUM fare, Category 1 (double occupancy)	Early booking until	Discount	Combination discount	Format/Theme/Special	
EUX2522	Piraeus (Athens) – Naples	11	30 Sep – 11 Oct 2025	7,689	30 Sep 2024	–440	–	–990	GOLF & CRUISE, FAMILY
EUX2523	Naples – Lisbon	11	11 Oct – 22 Oct 2025	7,689	11 Oct 2024	–440	–990		
EUX2524	Lisbon – Lisbon	11	22 Oct – 02 Nov 2025	7,689	22 Oct 2024	–440		–990	FAMILY
EUX2525	Lisbon – Tenerife	11	02 Nov – 13 Nov 2025	7,689	02 Nov 2024	–440	–1,650		
EUX2526	Tenerife – Curacao	15	13 Nov – 28 Nov 2025	10,989	13 Nov 2024	–660		–1,650	IN2BALANCE
EUX2527	Curacao – New York	12	28 Nov – 10 Dec 2025	9,889	28 Nov 2024	–440	–990		
EUX2528	New York – New York	10	10 Dec – 20 Dec 2025	7,909	10 Dec 2024	–440		–1,650	GOLF & CRUISE, FAMILY
EUX2600	New York – Colon	19	20 Dec 2025 – 08 Jan 2026	16,489	20 Dec 2024	–770	–2,200		
EUX2601	Colon – Los Angeles	17	08 Jan – 25 Jan 2026	12,089	08 Jan 2025	–660		–2,200	GOLF & CRUISE
EUX2602	Los Angeles – Tahiti	20	25 Jan – 14 Feb 2026	14,179	25 Jan 2025	–770	–2,750		
EUX2603	Tahiti – Valparaiso	20	14 Feb – 06 Mar 2026	15,389	14 Feb 2025	–770		–2,750	IN2BALANCE
EUX2604	Valparaiso – Rio de Janeiro	21	06 Mar – 27 Mar 2026	14,949	06 Mar 2025	–880	–2,750		
EUX2605	Rio de Janeiro – Tenerife	15	27 Mar – 11 Apr 2026	9,119	27 Mar 2025	–660		–23,100 <sup>1</sup>	CRUISE COMBINATION <sup>1</sup>
EUX252605	Tenerife – Tenerife	149	13 Nov 2025 – 11 Apr 2026	87,901	13 Nov 2024	–6,050			
EUX2606	Tenerife – Tenerife	10	11 Apr – 21 Apr 2026	6,919	11 Apr 2025	–440	–990	–2,200	GOLF & CRUISE
EUX2607	Tenerife – Bilbao	12	21 Apr – 03 May 2026	8,459	21 Apr 2025	–440			
EUX2608	Bilbao – Hamburg	12	03 May – 15 May 2026	8,349	03 May 2025	–440	–990	–990	GOLF & CRUISE
EUX2609	Hamburg – Hamburg	14	15 May – 29 May 2026	9,229	15 May 2025	–550			
EUX2610	Hamburg – Hamburg	13	29 May – 11 Jun 2026	8,679	29 May 2025	–550	–660	–990	GOLF & CRUISE
EUX2611	Hamburg – Kiel	3	11 Jun – 14 Jun 2026	2,409	11 Jun 2025	–220			
EUX2612	Kiel – Hamburg	12	14 Jun – 26 Jun 2026	8,129	14 Jun 2025	–440	–7,700 <sup>1</sup>	–	CRUISE COMBINATION <sup>1</sup>
EUX260612	Tenerife – Hamburg	76	11 Apr – 26 Jun 2026	44,473	11 Apr 2025	–3,080			
EUX2613	Hamburg – Hamburg	14	26 Jun – 10 Jul 2026	9,449	26 Jun 2025	–550	–990	–	GOLF & CRUISE, FAMILY
EUX2616	Hamburg – Malaga	13	14 Jul – 27 Jul 2026	9,119	14 Jul 2025	–550	–	–990	
EUX2617	Malaga – Monte Carlo	9	27 Jul – 05 Aug 2026	6,589	27 Jul 2025	–330	–990		FAMILY
EUX2618	Monte Carlo – Civitavecchia (Rome)	11	05 Aug – 16 Aug 2026	8,019	05 Aug 2025	–440		–990	
EUX2619	Civitavecchia (Rome) – Dubrovnik	9	16 Aug – 25 Aug 2026	6,589	16 Aug 2025	–330	–990		FAMILY
EUX2620	Dubrovnik – Piraeus (Athens)	12	25 Aug – 06 Sep 2026	8,679	25 Aug 2025	–440		–990	
EUX2621	Piraeus (Athens) – Istanbul	10	06 Sep – 16 Sep 2026	7,359	06 Sep 2025	–440	–990		
EUX2622	Istanbul – Piraeus (Athens)	12	16 Sep – 28 Sep 2026	8,679	16 Sep 2025	–440		–	



For more detailed information about the special travel formats, visit [www.hl-cruises.com/specialtravelformats](http://www.hl-cruises.com/specialtravelformats)

 All information and prices relating to your cruise can be found at [www.hl-cruises.com/CRUISENUMBER](http://www.hl-cruises.com/CRUISENUMBER)

Exchange rate: GBP 0.86 = € 1.00

<sup>1</sup>The combination discount is already included in the prices for the cruise combinations. No additional offers, reductions or discounts are applicable.

PRICE EXAMPLES IN POUNDS STERLING (GBP), CATEGORY 1

CRUISE NO.	PORT OF DEPARTURE – PORT OF ARRIVAL	DAYS	CRUISE DATES Cruise only	PRICE PER PERSON GBP Cruise only, PLATINUM fare, Category 1 (double occupancy)	SAVINGS PER PERSON GBP			SPECIAL TRAVEL INFORMATION Format/Theme/Special	
					Early booking until	Discount	Combination discount		
EUX2522	Piraeus (Athens) – Naples	11	30 Sep – 11 Oct 2025	6,011	30 Sep 2024	–344	–	–780	GOLF & CRUISE, FAMILY
EUX2523	Naples – Lisbon	11	11 Oct – 22 Oct 2025	6,011	11 Oct 2024	–344	–780		
EUX2524	Lisbon – Lisbon	11	22 Oct – 02 Nov 2025	6,011	22 Oct 2024	–344	–780	–780	FAMILY
EUX2525	Lisbon – Tenerife	11	02 Nov – 13 Nov 2025	6,011	02 Nov 2024	–344		–1,290	–780
EUX2526	Tenerife – Curacao	15	13 Nov – 28 Nov 2025	8,591	13 Nov 2024	–516	–780	–1,290	IN2BALANCE
EUX2527	Curacao – New York	12	28 Nov – 10 Dec 2025	7,731	28 Nov 2024	–344		–1,290	–780
EUX2528	New York – New York	10	10 Dec – 20 Dec 2025	6,183	10 Dec 2024	–344	–1,720	–1,720	
EUX2600	New York – Colon	19	20 Dec 2025 – 08 Jan 2026	12,891	20 Dec 2024	–602	–2,150	–1,720	IN2BALANCE
EUX2601	Colon – Los Angeles	17	08 Jan – 25 Jan 2026	9,451	08 Jan 2025	–516		–2,150	–2,150
EUX2602	Los Angeles – Tahiti	20	25 Jan – 14 Feb 2026	11,085	25 Jan 2025	–602	–2,150	–2,150	IN2BALANCE
EUX2603	Tahiti – Valparaiso	20	14 Feb – 06 Mar 2026	12,031	14 Feb 2025	–602			
EUX2604	Valparaiso – Rio de Janeiro	21	06 Mar – 27 Mar 2026	11,687	06 Mar 2025	–688	–2,150		IN2BALANCE
EUX2605	Rio de Janeiro – Tenerife	15	27 Mar – 11 Apr 2026	7,129	27 Mar 2025	–516			
EUX252605	Tenerife – Tenerife	149	13 Nov 2025 – 11 Apr 2026	68,723	13 Nov 2024	–4,730	–18,060 <sup>1</sup>		CRUISE COMBINATION <sup>1</sup>
EUX2606	Tenerife – Tenerife	10	11 Apr – 21 Apr 2026	5,409	11 Apr 2025	–344	–780	–1,720	GOLF & CRUISE
EUX2607	Tenerife – Bilbao	12	21 Apr – 03 May 2026	6,613	21 Apr 2025	–344		–780	
EUX2608	Bilbao – Hamburg	12	03 May – 15 May 2026	6,527	03 May 2025	–344	–780	–780	GOLF & CRUISE
EUX2609	Hamburg – Hamburg	14	15 May – 29 May 2026	7,215	15 May 2025	–430			
EUX2610	Hamburg – Hamburg	13	29 May – 11 Jun 2026	6,785	29 May 2025	–430	–520	–520	GOLF & CRUISE
EUX2611	Hamburg – Kiel	3	11 Jun – 14 Jun 2026	1,883	11 Jun 2025	–172			
EUX2612	Kiel – Hamburg	12	14 Jun – 26 Jun 2026	6,355	14 Jun 2025	–344	–6,020 <sup>1</sup>	–	CRUISE COMBINATION <sup>1</sup>
EUX260612	Tenerife – Hamburg	76	11 Apr – 26 Jun 2026	34,770	11 Apr 2025	–2,408			
EUX2613	Hamburg – Hamburg	14	26 Jun – 10 Jul 2026	7,387	26 Jun 2025	–430	–780	–	GOLF & CRUISE, FAMILY
EUX2616	Hamburg – Malaga	13	14 Jul – 27 Jul 2026	7,129	14 Jul 2025	–430	–	–780	
EUX2617	Malaga – Monte Carlo	9	27 Jul – 05 Aug 2026	5,151	27 Jul 2025	–258	–780	–780	FAMILY
EUX2618	Monte Carlo – Civitavecchia (Rome)	11	05 Aug – 16 Aug 2026	6,269	05 Aug 2025	–344			FAMILY
EUX2619	Civitavecchia (Rome) – Dubrovnik	9	16 Aug – 25 Aug 2026	5,151	16 Aug 2025	–258	–780	–780	FAMILY
EUX2620	Dubrovnik – Piraeus (Athens)	12	25 Aug – 06 Sep 2026	6,785	25 Aug 2025	–344			FAMILY
EUX2621	Piraeus (Athens) – Istanbul	10	06 Sep – 16 Sep 2026	5,753	06 Sep 2025	–344	–780	–	
EUX2622	Istanbul – Piraeus (Athens)	12	16 Sep – 28 Sep 2026	6,785	16 Sep 2025	–344			



For more detailed information about the special travel formats, visit [www.hl-cruises.com/specialtravelformats](http://www.hl-cruises.com/specialtravelformats)



All information and prices relating to your cruise can be found at [www.hl-cruises.com/CRUISENUMBER](http://www.hl-cruises.com/CRUISENUMBER)

<sup>1</sup>The combination discount is already included in the prices for the cruise combinations. No additional offers, reductions or discounts are applicable.

ALL FAMILY BENEFITS AT A GLANCE

SERVICES	DETAILS	
CHILDCARE	From 2 years of age* (in the small children's area, limited to 12 children)	
KIDS' AND TEENS' ROOMS	<b>Knopf Club</b> for 2- to 3-year-olds*, <b>Kids' Club</b> for 4- to 10-year-olds and <b>Teens' Club</b> for 11- to 15-year-olds	
FACILITIES	<b>Knopf Club:</b> ball pit, sensory wall, Steiff Cuddle Lounge, cots, changing table <b>Kids' Club:</b> creative studio and art workshop, research laboratory, children's library, reading and play area, adventure and climbing wall, kids' cinema, stage and theatre corner, Wii and PlayStation <b>Teens' Club:</b> chill-out areas, PC areas with Internet access, table football, table tennis, DVD player, Wii and PlayStation	
SUPERVISION TIMES	<b>Knopf Club*:</b> 9.00–17.00 hrs and sleeping supervision 18.30–22.00 hrs <b>Kids' Club:</b> 9.00–17.00 hrs and 18.30–22.00 hrs <b>Teens' Club:</b> 9.00–17.00 hrs and 18.30–21.00 hrs All clubs are also partly open outside the supervision times.	
BABY WELCOME PACKAGE (up to the age of 3)	Yes. For further information, see page 55 of the main catalogue.	
BABIES ON BOARD	For safety reasons, babies and small children are only allowed to travel on board within Europe when over the age of 8 months. For travel in the rest of the world, children must be at least 2 years old. Special life jackets are available for babies and children. Please note that, for safety reasons, the minimum age for travelling in Zodiacs is 6 years.	
LATE-RISER SERVICE	The nanny/buddy will collect the children from their suite at 8.00 hrs and take them to breakfast with all the other children. The late-riser service* for 2- to 3-year-olds is only available as part of the supervision package (subject to charges). The service is only available on days at sea and requires registration in advance.	
EXCURSIONS	Special kids' and teens' excursions are available at a surcharge on family cruises.* The travel concierge will be happy to organise individual family excursions.*	
GROUP DINNER FOR CHILDREN	Yes (18.30 hrs)	
GROUP DINNER FOR TEENS	Yes (18.30 hrs)	
KIDS' MENUS	Yes	
HIGH CHAIRS	Yes	
CONSIDERATION FOR ALLERGIES/INTOLERANCES	Yes	
DISCOUNTS FOR CHILDREN (based on the age of the child on the date of departure)	Up to and including 11 years of age	<b>Free of charge</b> sharing the suite with one or two people paying the full price
	From 12 up to and including 15 years of age	<b>€ 105/USD 115.50/GBP 90.30 per night</b> sharing the suite with one or two people paying the full price
	For children sharing with only one person paying the full cruise price, that person will pay the cruise price for single occupancy in the relevant category (subject to availability). Accommodation will be provided in an extra bed in the same suite.	

\*This service is not included in the cruise price.

GOOD TO KNOW

SHORE ACTIVITIES

Organised shore activities are not included in the cruise price and can be prebooked online at [www.hl-cruises.com/mybookings](http://www.hl-cruises.com/mybookings) or via your travel agency. Depending on the destination region, excursions may be organised with limited capacity. You will receive the binding programme including prices approximately three months prior to departure. On selected excursions, an individual audio system of the EUROPA 2 will be used on loan.

PAYMENT/TRAVEL DOCUMENTS

The cruise price must be paid by means of a direct transfer or via credit card (MasterCard, Visa, American Express) directly to Hapag-Lloyd Cruises. Payment of the cruise price to your travel agency will not settle your payment obligation. Upon the conclusion of contract – that is, when you receive the written booking confirmation – a deposit will be payable in accordance with clause 3.2 of the Terms and Conditions of Travel. The passenger will receive a refund security certificate before paying the deposit (see clause 16 of the Terms and Conditions of Travel). The balance of the fare shall be due 30 days before the scheduled cruise start date. The total amount is payable immediately for cruises booked within 30 days of the departure date. Hapag-Lloyd Cruises shall send the travel documents upon receiving the final payment (30 days prior to departure at the earliest) and the full passport information for the cruise passengers registered by the passenger (manifest data).

CHANGES OF BOOKING

On request, a change of booking can be made up to 365 days prior to departure. Hapag-Lloyd Cruises will charge a processing fee of € 300 (USD 330, GBP 260)\*\* per person for a change of booking. A change of booking from the 364th day prior to the start of the cruise requires the passenger to cancel the booking in line with the provisions of clause 9 of the Terms and Conditions of Travel and to make a new booking.

\*\*The currency in which the travel price has been or is to be paid is authoritative.

CANCELLATION FEE INSURANCE INCLUDED

The cruise price of the PLATINUM and GOLD fares includes cancellation fee insurance from ERGO (ERGO Reiseversicherung AG) arranged as part of a Hapag-Lloyd Cruises group insurance contract. By booking a cruise, you automatically enter into this contract. Together with the booking form, you will receive an insurance certificate (insurance policy) detailing the terms and conditions of insurance and other information. If you need to make an insurance claim, you are obliged to immediately cancel the cruise with Hapag-Lloyd Cruises and to report the claim to ERGO. You can find more details in your insurance certificate (insurance policy) or at [www.ergo-reiseversicherung.de/en](http://www.ergo-reiseversicherung.de/en) or write an email to [contact@ergo-reiseversicherung.de](mailto:contact@ergo-reiseversicherung.de)  
**Please note that an excess applies of 20% of the refundable loss.**

EMBARKATION/DISEMBARKATION

You will receive the final embarkation and disembarkation times with your travel documents. Please allow sufficient time for individual arrival and departure. We recommend that you arrive at the pier at least two hours before the ship is due to depart. As a rule, departure from the pier can be scheduled at the earliest 90 minutes after the arrival of the ship and once official approval has been granted. In most ports, you can conveniently drop off your luggage directly at the cruise terminal before embarkation. You can find all the details online at [www.hl-cruises.com/embarkation-and-disembarkation-times](http://www.hl-cruises.com/embarkation-and-disembarkation-times). Please be aware that regulations vary from port to port and that there may sometimes be unexpected delays.

BUS TRANSFER, HAMBURG OR KIEL

For the cruises which start or end in Hamburg or Kiel, a bus transfer from/to Hamburg airport and from/to Hamburg main station is included in the cruise price. You will receive further information approximately three months prior to the start of your cruise.

PRICE DATE

All prices for services advertised in this catalogue are as of April 2024. Subject to change.



# VACCINATION, IMMIGRATION AND VISA REQUIREMENTS

The information on the applicable vaccination, immigration and visa requirements was correct on the date of printing (subject to change). These notices and requirements only apply to citizens of Germany, Austria and Switzerland. Citizens of other countries are asked to enquire about their own requirements at their consulate or embassy or when booking in their travel agency. As some of the necessary visas have a limited period of validity and as visa requirements can change, please wait until you receive the cruise information approximately three months prior to departure before applying for a visa.

### GENERAL INFORMATION ON VACCINATION REQUIREMENTS

- The passenger should research infection prevention, vaccine protection and other prophylactic measures in advance; if necessary, the passenger should seek medical advice on the risks of thrombosis and other health problems, as well as vaccine intolerance. For general information, please refer to the public health authorities, doctors experienced in travel medicine, tropical disease specialists, information services specialising in travel medicine or the Federal Centre for Health Education.
- In all cases, passengers should have their immunisation protection against tetanus, diphtheria and polio tested and, if necessary, boosted. Please consult your doctor prior to departure for further recommended vaccines (e.g. hepatitis A, malaria and tick-borne encephalitis).
- A yellow fever vaccination must be performed at least ten days before entering the country in which a yellow fever vaccination is mandatory and has to be recorded on the vaccination certificate. Otherwise entry will be refused. In this context, please take note of the information provided on the right to find out for which cruises/countries a yellow fever vaccination is mandatory. Despite the most recent statement from the World Health Organization (WHO) that a single vaccination is sufficient for lifelong protection from yellow fever, this is contrary to the requirements of the respective countries, which still require a booster every ten years. National legislation is binding in these instances and legally supersedes the recommendations of the WHO. If you do not have an effective yellow fever vaccination and evidence of the latter, embarkation on the ship will not be possible. We refer to clause 4 of our Terms and Conditions of Travel. Under certain circumstances, a written confirmation of vaccine intolerance may be sufficient. However, we cannot guarantee that the latter will be accepted by the respective local authorities in every individual case. If you have spent time in an area with a yellow fever epidemic before your cruise, we urgently advise you to carry proof of your yellow fever vaccination on your person and to show it if required by the authorities on board.



- There are enhanced vaccination requirements in the South Seas region, and compliance with them is a prerequisite for entry. Vaccination against measles in particular is increasingly vital. Please check the current vaccination requirements and your vaccination record before you travel. There should be at least four weeks between the first and second measles vaccinations. The second vaccination must be administered at least 15 days before entering the country for which the vaccination is mandatory and entered in the vaccination certificate. Otherwise entry will be refused. This does not apply to children under six months of age, pregnant women or individuals for whom the measles vaccination is contra-indicated and can demonstrate this with a medical certificate.

### GENERAL INFORMATION ON IMMIGRATION AND VISA REQUIREMENTS

- In general, unless indicated otherwise, passengers require a valid passport or children's passport which must have an expiry date more than six months after the end of the cruise.
- Your passport must contain two free opposing pages per country in order for you to enter and leave certain countries (especially outside of Western Europe). Therefore, please check in advance whether your passport meets the requirements for the cruise you have booked.
- Special entry requirements apply for minors in many countries, especially if they are not travelling with their parents (and instead with their grandparents, for example) or are travelling with only one parent. A written declaration of consent from the parents and/or an international birth certificate may be required, for example. These documents must be written and certified at least in English, but often also in the language of the respective country of travel. Please inform yourself in advance at the relevant embassies.
- **Any immigration or visa fees accrued are not covered by the cruise price.**
- Please enquire with your travel agency as to the current entry requirements in place at your cruise destinations. Your travel agency will be happy to assist you in procuring any necessary visas.

### NOTICE 1

You will only need a valid ID card for entry.

### NOTICE 2

Everyone travelling to the USA who does not require a visa under the Visa Waiver Program must register online with the US Department of Homeland Security at least 72 hours before their arrival and apply for electronic travel authorisation. A processing fee is charged for the application. You can find more information online at [esta.cbp.dhs.gov/esta](https://esta.cbp.dhs.gov/esta) and from your travel agency. In addition to your electronic travel authorisation, you will require a passport with a chip containing biometric data for visa-free entry into the USA. Passengers with non-machine-readable passports, such as temporary replacement passports, do not qualify for visa-free entry into the USA. All such travellers require a visa. These regulations also affect children (from birth). Every child requires their own European passport. A child cannot enter the country with a children's passport or ID card or using a parent's passport. Upon entering the country, photographs and fingerprints will be taken from each guest. Passengers who have visited Iran, Iraq, North Korea, Sudan, Syria, Libya, Yemen or Somalia after 1 March 2011 do not qualify for visa-free entry and need a regular visa to enter the USA. Even passengers who have visited Cuba in the past can currently no longer enter the USA with ESTA, but must apply for a visa. Unfortunately, there is conflicting information as to whether this visa requirement only applies to people who visited Cuba on or after 12 January 2021 or whether it pertains to all travellers entering Cuba. Please contact the US diplomatic mission responsible for you in good time before your cruise.

### NOTICE 3

You will require an entry permit, which must be applied for before travelling and is issued in the form of an electronic visa (ETA). You will be required to pay for this permit. You can find more information online or contact your travel agency.



CRUISE NO.	MANDATORY VACCINATIONS	IMMIGRATION AND VISA REQUIREMENTS FOR CITIZENS OF GERMANY, AUSTRIA AND SWITZERLAND*
EUX2522	None	Notice 1 (for citizens of Germany and Switzerland)
EUX2523	None	Notice 1
EUX2524	None	Notice 1
EUX2525	None	None
EUX2526	None	Notice 2
EUX2527	None	Notice 2 (USA)
EUX2528	None	Notice 2 (USA)
EUX2600	None	Notice 2 (USA)
EUX2601	None	Notice 2 (USA)
EUX2602	None	Notice 2 (USA)
EUX2603	None	Notice 2
EUX2604	None	None
EUX2605	Yellow fever (Cape Verde)	None
EUX2606	None	Notice 1
EUX2607	None	Notice 1
EUX2608	None	Notice 3 (Great Britain)
EUX2609	None	Notice 3 (Great Britain)
EUX2610	None	Notice 3 (Great Britain)
EUX2611	None	Notice 1
EUX2612	None	Notice 1
EUX2613	None	Notice 1
EUX2616	None	Notice 3 (Great Britain)
EUX2617	None	Notice 1
EUX2618	None	Notice 1
EUX2619	None	Notice 1
EUX2620	None	Notice 1
EUX2621	None	Notice 1 (for citizens of Germany and Switzerland)
EUX2622	None	Notice 1 (for citizens of Germany and Switzerland)

\* Citizens of other countries are asked to enquire about their own requirements at their consulate or embassy or when booking in their travel agency.

# THE EUROPA 2 FROM A TO Z

## AIR CONDITIONING

The suites and the social rooms are air-conditioned with 100% fresh air. You can set the temperature in your suite individually. The air conditioning cannot be switched off.

## BEDS

All suites are fitted with two permanently adjoining beds. In addition, the sofa can be used as a bed for a third person. The lying surface of the sofa ranges from approximately 70 × 240 cm (2.3 × 7.9 ft) (in Owner Suites) to 70 × 205 cm (2.3 × 6.7 ft) (in Grand Ocean Suites), 70 × 190 cm (2.3 × 6.2 ft) (usable up to a maximum age of 15 years; in Penthouse and Grand Penthouse Suites) and 70 × 175 cm (2.3 × 5.7 ft) (usable up to a maximum age of 12 years, in Veranda Suites) to 70 × 160 cm (2.3 × 5.2 ft) (usable up to a maximum age of 10 years; in suites with fully accessible layout and equipment) and approximately 70 × 140 cm (2.3 × 4.6 ft) (usable up to a maximum age of 6 years; in Ocean Suites). Family Apartments are not furnished with a sofa.

## BOUTIQUE AND JEWELLER

The boutique sells an extensive range of exclusive ladies’ and men’s fashions, personal hygiene products, gifts and souvenirs. Please note that customs regulations of many countries prohibit the opening of the boutique when the ship is docked in ports. The jewellers’ shop WEMPE offers a range of precious watches, selected jewellery and flawless diamonds.

## BRIDGE

Due to its exceptional importance as the control centre for nautical and technical processes, the bridge is a highly sensitive area. For this reason and in accordance with international regulations, it is not open to the public. However, we would like to give you the opportunity to visit the bridge unless prevented by nautical interests or the local regulations of the coastal regions we are passing.

## BUTLER

A butler service is available to guests of the Owner Suites, Grand Penthouse Suites and Penthouse Suites. Amongst other things, your butler will attend to unpacking and packing your luggage, will serve meals and drinks in your suite, will take on the ironing of your clothes and many other services.

## CHILDCARE (FROM 2 YEARS AND UP)

For children from the age of 2, there are qualified childcare specialists who organise both special children’s events on board as well as children’s and teens’ excursions. The supervision times for children from 4 years and up are usually from 9.00 to 17.00 hrs and from 18.30 to 22.00 hrs. The supervision times for adolescents from 11 years and up are usually from 9.00 to 17.00 hrs and from 18.30 to 21.00 hrs. During these times, games, sports and creative programmes will be offered. The Kids’ Club and Teens’ Club provide rooms for supervised playing and are partly accessible outside of the supervision times. Their equipment is appropriate for the age group concerned. The childcare service in the Knopf Club for children between the ages of 2 and 3 is available for a fee of €65 per day and is offered during the following supervision times: from 9.00 to 17.00 hrs and, as part of our sleeping supervision service, from 18.30 to 22.00 hrs. Registration for the Knopf Club is required before commencement of the cruise. On days at sea, we offer a childcare late-riser service for parents who wish to enjoy a lie-in. In this case, children from 2 years and up are collected from the suite and are taken for a group breakfast in one of the restaurants. In addition, on family cruises we also offer special shore activities for children

and teens (subject to a charge). We will also be happy to provide an evening babysitter via our chief nanny (subject to availability and for a charge). Please note that the pool is not supervised on board. Guests use the pool at their own risk.

## DRESS CODE

There is no set dress code on board the EUROPA 2 during the day. In the evening, however, gentlemen should wear smart-casual clothing in the restaurants on Deck 4 as well as in the Sushi Restaurant Sakura. This means a jacket or a summer suit; short trousers and T-shirts are not permitted. A tie is not required. It is not necessary to wear a jacket in the evening in the Yacht Club Restaurant.

For excursions or private trips ashore, clothing should be particularly comfortable and practical as well as suited to the route you will travel. Sturdy footwear is recommended and flat shoes are indispensable when on board the ship and ashore. For Zodiac excursions, especially in colder regions, we recommend that you wear waterproof clothing to keep you dry.

## DRONES

The private use of drones is not permitted on board our luxury cruise ships. This applies during the cruise and during lay times in port, as well as at landing points in remote regions. In polar regions, Hapag-Lloyd Cruises places great value on respecting international agreements to protect sensitive natural environments and the animal kingdom in particular. In other regions of the world, approval for the use of drones ashore must be explicitly granted by the relevant authorities. These applications must be made by the passengers individually and without any intervention by Hapag-Lloyd Cruises. As well as a drone licence, which users must acquire in their country of origin, the relevant approval must be available for presentation at all times. Please take these instructions seriously, since passengers who are in breach of these regulations and licensing requirements will be liable to prosecution.

## EMBARKATION, DISEMBARKATION

Please see page 21 of this price insert for more information regarding these matters.

## FAMILY APARTMENT WITH CONNECTING DOOR

On Deck 8, there are seven Family Apartments – each consists of two units joined by a connecting door.

## FOOD ALLERGIES/DIETARY REQUIREMENTS

We are happy to cater to food allergies where possible and subject to availability. Please let us know your wishes when making your booking. Low-calorie meals are available every day for those who like to eat healthily.

## GENERAL

For all cruises referred to, the Terms and Conditions of Travel of Hapag-Lloyd Cruises, a TUI Cruises GmbH company, apply. All information was correct at the time of printing, replaces all previous publications and may be subject to alterations. The booking confirmation is definitive. Please also note: you can view the EU regulations concerning the rights of passengers travelling by sea on our website at [www.hl-cruises.com/service/cruise-information](http://www.hl-cruises.com/service/cruise-information)



## GOLF

You can optimise your game with the help of modern technology on any EUROPA 2 cruise: the golf simulators on Deck 5 allow you to put your skills to the test at more than 15 top golf courses around the world. Upon request, a PGA professional (subject to a charge) will train you via the video coach or accompany you for a round of golf on the stunning courses along your cruise route. Can’t get enough of golf? Why not join a Golf & Cruise voyage on the EUROPA 2. Visit [www.hl-cruises.com/golf-cruises](http://www.hl-cruises.com/golf-cruises) to find out all about our cruises where everything revolves around the finest sport in the world.

## GRATUITIES

Gratuities are not mandatory on board. Acknowledgement of particularly good service is at the discretion of each guest.

## GUEST PORTAL

The guest portal on your TV or tablet lets you select from a range of films and music in many different styles and provides you with detailed information about your cruise at all times. In addition, you can access your on-board account or view the day’s menus, send and receive emails, and much more.

## GUESTS WITH LIMITED MOBILITY

Some cruises on the EUROPA 2 may be unsuitable for guests with limited mobility. Please note that a large number of our planned Zodiac landings and shore activities require a high level of physical fitness; depending on the conditions, we can only guarantee participation for guests with no mobility restrictions. The EUROPA 2 offers two suites (suites 811 and 813) with fully accessible layout and equipment. We nevertheless highly recommend that you travel together with a responsible companion because, due to special procedures on board a ship, continuous assistance is not possible. Certain groups of people can only

be accommodated if they are accompanied. Please bring your own standard-size wheelchair or any other medical equipment with you if you are dependent upon it. Unfortunately, electric wheelchairs and guide dogs cannot be brought on board. Please note that participating in shore activities and riding in the Zodiacs (subject to weather conditions) may not be possible for guests with physical limitations. We reserve the right to restrict participation in group activities to guests who can manage the entire activity without problems and without external assistance. Unfortunately, guests who are dependent on a wheelchair cannot travel in the Zodiacs. Whether or not guests can go ashore by tender boat (when the ship is at anchor) is also dependent on the weather and cannot always be guaranteed. To ensure that you experience a relaxing cruise on which everything goes smoothly, before booking please provide us with details of your physical impairment and enquire as to whether we can meet your individual needs.

## HONEYMOON SPECIAL

Are you spending your honeymoon or a milestone wedding anniversary\*\* on board the EUROPA 2? If so, we look forward to making your time together extra special and treating you to superb cuisine with our Honeymoon Special compiled exclusively for you. You can book the Honeymoon Special at your travel agency or directly through Hapag-Lloyd Cruises upon presentation of your marriage certificate. Further information on this free package can be found at [www.hl-cruises.com/wedding](http://www.hl-cruises.com/wedding)

## INTERNET\* AND EMAIL\*

Via the guest portal, you have a direct Internet access. In addition, the whole ship is equipped with Wi-Fi hotspots via which you can access the Internet using a laptop, your private mobile phone or the tablet available in your suite. Internet use is free of charge for one hour per guest per day.\*\*\*



Your personal email account is available to you during your cruise on the EUROPA 2 via the guest portal. You can receive, send and forward emails. This service is available to you free of charge. To open or send attachments, you will need to use webmail.

#### LAUNDRY/DRY CLEANING/IRONING SERVICE

The EUROPA 2 has a laundry, dry cleaning and ironing service (at a surcharge). In the Owner Suites, Grand Penthouse Suites and Penthouse Suites, an ironing service is included in the cruise price.

#### LIBRARY/PC WORKSTATIONS

Everything that the avid reader is looking for is here in our on-board library in the Belvedere and can be borrowed at any time free of charge. In addition, PC workstations with printers are at your disposal. Furthermore, every suite is fitted with a tablet.

#### MEANS OF PAYMENT

We have chosen a cashless payment system on board the EUROPA 2. The on-board currency is euros. We accept German EC/maestro cards and the following credit cards: MasterCard, American Express and Visa.

#### MEDICAL SERVICES

The EUROPA 2 has a modern, well-equipped ship's hospital under the supervision of an experienced ship's doctor. Guests who are being treated for any medical condition should contact the ship's doctor directly after embarkation. It is important to bring any medication required on board with you (in a quantity that is sufficient for the entire duration of the cruise). Treatment for seasickness is subject to a charge if you make use of our medical services. We offer thrombosis prevention medication on board if required (subject to a charge).

The treatment on the ship is a treatment which is equivalent to a visit to a doctor abroad (flag state Malta). We therefore recommend that you take out private international health insurance. Payment will be through your on-board account. Hapag-Lloyd Cruises cannot accept liability for the reimbursement of the full amount of the treatments from your respective personal health insurance.

Extensive medical treatment on board is only possible to a limited extent. For example, the on-board hospital is not specially equipped for the care of babies and small children. In addition, the on-board pharmacy is equipped with a range of products for general illnesses and for initial/emergency treatment. In a medical emergency, the patient will be debarked and transferred

to a nearby hospital ashore. The associated costs must be borne by the patient. Guests who are being treated for any medical condition should carry their medical records with them. We will check the possibility of providing dialysis on request.

#### MINI BAR

Soft drinks and beer in the mini bars of the suites are included in the cruise price. In the Owner Suites, Grand Penthouse Suites, Penthouse Suites and Grand Ocean Suites, there is also a selection of fine spirits included.

#### NEWSPAPERS\*

We can provide a large selection of digitally printed full editions of national and international newspapers on request (subject to a charge). The newspapers are delivered to your suite in the morning or according to when they are published. If you are interested, please contact Reception on Deck 4. Furthermore, a free on-board edition of *Die Welt* or an alternative abridged newspaper is available in the EUROPA 2 guest portal, which you can access via your own mobile device or the tablet in your suite. You can also find other selected newspapers and magazines there (subject to a charge).

#### ON-BOARD LANGUAGES

The on-board languages are German and English.

#### PHOTOGRAPHER/FILM TEAM

A photographer is on board on every cruise to take pictures on board during the cruise and on shore. Upon request, they will also print your own photos on photographic paper or burn your digital photos on to a DVD (for a charge). In addition there is usually a video producer on board who will record your cruise for you on film. Photos and the film can be purchased.

#### POST

In most of the ports, it is possible for Reception to arrange to post your postcards and letters. Your suite account will be debited with the appropriate postage charges.

#### PROPULSION

The low-vibration propulsion system of the EUROPA 2 reaches a total output of 15,500 kW.

#### SAFE

Every suite has a private safe for keeping your valuables secure. Further valuables can be deposited in the safe at Reception.

#### SHIP ID CARD

This ID card acts as a substitute for your passport or personal ID card when you board or leave the ship and is checked by our security system. The system electronically registers whether you are on board or ashore. Your ship ID card will also give you access to your suite.

#### SHORE ACTIVITIES

A varied programme of shore excursions (subject to a charge) will be offered as part of your cruise. You will receive the shore excursion catalogue and booking form with your preliminary travel documents (approximately three months before the cruise begins). The excursions are not included in the price; if you wish, you can pre-book via your travel agency or online at [www.hl-cruises.com/mybookings](http://www.hl-cruises.com/mybookings). Booking on board is subject to availability. The tour office on Deck 4 will be happy to help. Depending on the destination region, excursions can only be held in English and with limited capacity.

#### SMOKING

All restaurants on board are non-smoking restaurants. The theatre, the Belvedere, the foyer, Club 2 and the entire OCEAN SPA area are also smoke-free areas. Smoking is permitted on the outer terrace of the Sansibar, while the indoor area of the Sansibar is a smoke-free zone. Cigars, cigarillos and pipes may only be smoked in the Collins (also during the day) and in the outside area of the Sansibar. Please note that smoking is not permitted in the suites. Smoking is permitted on the veranda. Smoking is not permitted on the Pool Deck under the magrodome. All other external decks are smoking zones. Smokers are obliged to exclusively use the ashtrays provided.

#### STABILISERS

The ship is fitted with state-of-the-art Blohm+Voss stabilisers that are extended from the sides during a heavy swell and can reduce the rolling movements of the ship in rough seas.

#### SUITES

Every suite has a visually divided living area (not in Family Apartments and in the fully accessible suites). In the Owner Suites and Grand Penthouse Suites, living and sleeping areas are spatially separated. All suites have a TV, tablet, telephone, mini bar, hairdryer, safe and a Nespresso coffee machine. In the suites above the Club 2 (501–513, odd numbers) and below the Sansibar (762–769), there may be disturbances from the entertainment programme. Please also take note of the information in the section entitled "Beds". You will find more information about the suite overview on pages 8 to 11 of this price insert.

#### SUITE SERVICE

Our suite service is available 24 hours a day with selected cold and warm dishes as well as drinks from the bar menu.

#### SUITES WITH CONNECTING DOORS

On Deck 6, Deck 7 and Deck 8, there are a total of 19 Veranda Suites that can be combined with their neighbouring suite by means of a connecting door, should separate bedrooms be preferred. Please also refer to the section entitled "Family Apartment with connecting door".

#### TABLE RESERVATIONS

Breakfast and lunch on board the EUROPA 2 are taken in an open seating arrangement. You have free choice of seats. This also applies to dinner in the Restaurant Weltmeere and in the Yacht Club Restaurant. Table reservations for dinner in the speciality restaurants (Serenissima, Tarragon including Grande Reserve, Elements, Sushi Restaurant Sakura) are accepted by the maitre

at the beginning of your cruise. Reservations cannot be made prior to departure. Unfortunately, we cannot accept any table reservations on cruises lasting less than seven days. Different rules apply for guests staying in the Owner Suites and Grand Penthouse Suites.

#### TELECOMMUNICATIONS\*/MOBILE TELEPHONE SERVICE\*

Your ship is fitted with a satellite communication system. Provided there is a connection to the communication satellite locally, this will enable a direct telephone connection worldwide. A direct telephone connection on board is also possible. Please note that even the dialling of a telephone number of the EUROPA 2 is chargeable to the caller. You can ask your telephone provider for the exact fees for a satellite telephone call on board; Hapag-Lloyd Cruises has no influence on this. The mobile network of the company WMS, a provider of mobile services on board cruise ships and planes, enables you to also use your personal mobile phone while at sea in areas in which your mobile phone provider normally cannot guarantee network coverage (service at an extra charge; prices vary according to the provider).

#### TENDER AND ZODIAC SERVICE

In all harbours in which the EUROPA 2 lies at anchor, tendering is used where possible with the ship's own launches (tenders) or motorised inflatable rubber boats (Zodiacs). Please note that, for safety reasons, the minimum age for travelling in Zodiacs is 6 years.

#### TIMES

All times stated in the main catalogue are local times. Arrival and departure times may change depending on the weather or for unforeseeable reasons.

#### TRAVEL CONCIERGE

The travel concierge is happy to advise you on individual shore arrangements, organise your personal programme requests and make all the necessary bookings for this (subject to a charge).

#### TV/RADIO CHANNELS\*

You will receive the channels available in the region in which the EUROPA 2 is currently located via satellite.

#### VOLTAGE

All electrical devices in your suite run on 230 V alternating current. A voltage converter that will allow you to use devices rated for 110 V on the European alternating-current network, as well as adapters for German and standard foreign plugs, are available at Reception.

#### WELLNESS AREA/SPA

Use of the sauna and steam bath is free of charge. Our OCEAN SPA wellness area offers guests a comprehensive feel-good programme (subject to a charge) – from a wide range of soothing applications and cosmetic treatments using premium-quality products to an on-board hairdresser. Reservations can only be made on board. For an extra charge, you can book a Personal SPA either by the hour or by the day. It includes a sauna, your own whirlpool, massage beds and comfortable furnishings for total relaxation.

\* Due to a potentially unstable satellite connection which depends on the weather and ship's position, especially in northern and southern cruising areas, this service cannot be guaranteed at all times.

\*\* Only valid for cruises of seven days or longer. The offer applies to honeymoon cruises (up to a maximum of six months after the date of marriage) and to cruises celebrating the 10th, 20th, 25th, 30th, 40th, 50th, 60th and 65th wedding anniversaries (cruise departure up to one month before or after the anniversary date). Please provide a copy of your marriage certificate as verification.

\*\*\* You can find more detailed information on Internet use on board at [www.hl-cruises.com/internet](http://www.hl-cruises.com/internet)

# MS EUROPA 2 – A DISTINGUISHED SHIP.



**Enjoy the only cruise fleet in the world with a 5-star rating  
according to Insight Guides 2024.**

Be inspired at [www.hl-cruises.com](http://www.hl-cruises.com), Facebook and Instagram.

Book now on our website, via email [service@hl-cruises.com](mailto:service@hl-cruises.com) and by phone +49 40 30703070 or at your travel agency.

Hapag-Lloyd Cruises, a TUI Cruises GmbH company, Heidenkampsweg 58, 20097 Hamburg, Germany.

**Free phone: Belgium** 0800 79421 · **Netherlands** 08000 220459 · **United Kingdom** 08000 513829 · **USA** 877 4457447

All prices in this brochure as of April 2024. Availability and pricing as well as services are subject to change without notice. The booking confirmation is definitive with regard to terms and prices. For more information and the Terms and Conditions of Travel, please refer to our website.

The printing of this advertising material supports more sustainable forest management through the use of certified paper.