



HAPAG ¹⁸/₉₁ LLOYD
CRUISES



NEW CRUISES 2028

SELECTED ROUTE HIGHLIGHTS

KEY FACTS

- Cruises online from 02 Dec 2025
- Duration: January 2028 to January 2029 (up to and including Christmas cruises 2029)
- 54 newly published cruises with the EUROPA and EUROPA 2
- 11 Golf & Cruise voyages (EUR2801, EUR2811, EUR2816 EUR2820, EUR2824, EUX2806, EUX2808, EUX2816, EUX2823, EUX2825, EUX2828)
- 71 newly published expedition cruises
- 9 Voyages for Young Explorers (NAT2803, NAT2808, NAT2812, NAT2818, NAT2823, NAT2900, INS2813, SPI2805, SPI2811)



ROUTE HIGHLIGHTS

MS EUROPA

ROUTE HIGHLIGHTS MS EUROPA – 1/3

The EUROPA kicks off the year with the many facets of Asia

- In January, it sails from Sri Lanka via Malaysia and Vietnam to Hong Kong (EUR2801, EUR2802)
- The Philippines is a new focus on two routes in February (EUR2803, EUR2804)
- Far Eastern splendour dominates in March and April in China, South Korea, Japan, Taiwan and Vietnam (EUR2805, EUR2806)
- Cambodia, Thailand, Malaysia and Singapore (EUR2807) as well as the route from Southeast Asia to the Indian Ocean (EUR2808) in April/May promise exoticism and diversity
- Two routes in May/June follow the rhythm of Africa (EUR2809, EUR2810)

OUR TIP:

PHILIPPINES – ISLAND MAGIC UP CLOSE

31 Jan – 14 Feb 2028, 14 days
Cruise EUR2803, MS EUROPA
from Hong Kong to Ho Chi Minh City
via Hundred Islands, Manila, Busuanga, Romblon, Boracay, Malcapuya Island, Palawan (Puerto Princesa), Con Dao

WONDERS OF SOUTHEAST ASIA

14 Feb – 01 Mar 2028, 16 days
Cruise EUR2804, MS EUROPA
from Ho Chi Minh City to Hong Kong
via Muara (Bandar Seri Begawan), Kota Kinabalu (Sabah), Sandakan, Bohol, Mantigue Island, Cresta de Gallo, Malcapuya Island, Busuanga, Manila



- Treasures of the Philippines united on two routes
- A mix of big cities and small islands
- Many destinations only for small ships
- Cruises can be ideally combined: Manila, Busuanga and Malcapuya Island on both routes – with many options, making two visits worthwhile
- Good flight connections to/from ports of embarkation and disembarkation



ROUTE HIGHLIGHTS MS EUROPA – 2/3

European diversity in summer: from the Mediterranean to Great Britain

- From azure-blue bays to picturesque old towns: in June and July on five routes through the western Mediterranean with a focus on Spain, France and Italy (EUR2811 to EUR2815)
- Classic Western Europe at the best time of the year (EUR2816)
- Three routes focusing on the Baltic Sea and Great Britain (EUR2817, EUR2819, EUR2820) in August and September

OUR TIP:

GLITZ AND GLAMOUR OF THE RIVIERA

26 Jun – 01 Jul 2028, 5 days

Cruise EUR2812, MS EUROPA

from Monte Carlo to Monte Carlo

via Sanary-sur-Mer, St-Tropez, Cannes

- A short cruise to fall in love with the hotspots of the Cote d'Azur
- Overnight stays and long lay times for experiences late into the night



OUR TIP:

PINTXOS, POETRY AND PRETTY PORT GEMS

29 Jul – 11 Aug 2028, 13 days

Cruise EUR2816, MS EUROPA

from Leixoes (Porto) to Hamburg

via Vigo, Bilbao, Saint-Jean-de-Luz, Concarneau, Fowey, Dartmouth, Guernsey, Jersey, Isle of Wight

- In charming Fowey, Cornwall looks like something out of a picture book
- Small authentic places alongside city classics



ROUTE HIGHLIGHTS MS EUROPA – 3/3

A glittering autumn/winter: North and Central America with the Caribbean

- Indian summer on North America's coasts with lots of nature, culinary delights and idyllic coastal towns (EUR2821, EUR2822)
- Magnificent vistas for winter days in November and December with two Caribbean routes (EUR2823, EUR2825)
- New route in the Gulf of Mexico between Mayan culture and the flair of the southern states (EUR 2824)
- Festive days in Central America on a 17-day cruise (EUR2900)

OUR TIP:

ISLAND PEARLS UNDER THE CARIBBEAN SUN

03 Dec – 17 Dec 2028, 14 days

Cruise EUR2825, MS EUROPA

from Miami to Colon

via Grand Turk, Saint-Barthelemy, Jost Van Dyke Island, Antigua, Mayreau, Grenada, Bonaire, Cartagena, San Blas Islands

- Advent on idyllic Caribbean beaches
- Exclusive Christmas shopping in the classy boutiques of St Barts



OUR TIP:

FESTIVE HOLIDAYS WITH THE SCENT OF TROPICAL NATURE

17 Dec 2028 – 03 Jan 2029, 17 days

Cruise EUR2900, MS EUROPA

from Colon to Panama City

via Santa Marta, Cartagena, San Blas Islands, daytime passage through the Panama Canal, Isla Parida, Puerto Jimenez, Quepos, Marina Flamingo, Isla Tortuga, Puntarenas, Isla Chapera

- New route with a vibrant mix of city experiences and island dreams
- Good flight connections to/from ports of embarkation and disembarkation



CRUISE COMBINATIONS MS EUROPA

FACETS OF A CONTINENT: ASIA IN DEPTH

04 Jan – 21 Apr 2028, 108 days
Cruise EUR280107, MS EUROPA
from Colombo (Sri Lanka) to Port
Keelang (Kuala Lumpur)

Look forward to:

- Start to the year on Sri Lanka
- The Philippines, a dream destination, and the mysteries of Borneo
- Multifaceted megacities such as Hong Kong and Bangkok
- Japan between traditions and trends
- Relaxation on the dream beaches of Thailand



GREENLAND'S GLACIERS AND THE SUN OF THE CARIBBEAN

27 Sep – 17 Dec 2028, 81 days
Cruise EUR282125, MS EUROPA
from Hamburg to Colon

Look forward to:

- Icy landscapes of Greenland
- Indian summer in Canada
- Cities of America's East Coast steeped in history and the charm of the southern states
- Mexico with the legacy of the Maya
- A relaxing run-up to Christmas in the Caribbean



ROUTE HIGHLIGHTS

MS EUROPA 2



ROUTE HIGHLIGHTS MS EUROPA 2 – 1/3

A perfect start to the year in North and Central America

- Premiere in January: Costa Rica in depth (EUX2801)
- From the Sunshine State to Mundo Maya: dream route through the Gulf of Mexico in February (EUX2803)
- Exclusive relaxation on the most beautiful beaches in the Caribbean on three routes in January, February and March (EUX2802, EUX2804, EUX2805)

The joys of spring or magic of autumn: the Atlantic islands

- Two cruises in March/April (EUX2806, EUX2807)
- A cruise in September/October followed by an Atlantic crossing (EUX2823, EUX2824)

OUR TIP:

PURA VIDA – COSTA RICA IN DEPTH

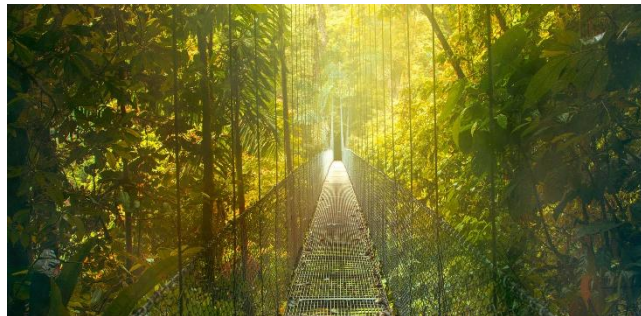
07 Jan – 20 Jan 2028, 13 days

Cruise EUX2801, MS EUROPA 2

from Panama City to Panama City

via Quepos, Marina Flamingo, Puerto Quetzal, Acajutla, Puntarenas, Isla Tortuga, Puerto Jimenez

- A symphony of impressions: exotic fauna and lush flora
- Many maiden calls for the EUROPA 2 such as Quepos and Puerto Jimenez



OUR TIP:

THE GREAT DIVERSITY OF THE CARIBBEAN SEA

20 Jan – 08 Feb 2028, 19 days

Cruise EUX2802, MS EUROPA 2

from Panama City to Miami

via daytime passage through the Panama Canal, San Blas Islands, Cartagena, Puerto Limon, Isla de Providencia, Grand Cayman, Jamaica (Ocho Rios, Port Antonio), Dominican Republic (La Romana, Puerto Plata), Grand Turk, Great Inagua

- The temperament of Latin America and Caribbean lifestyle combined
- Colonial charm, idyllic beaches and unspoilt nature



ROUTE HIGHLIGHTS MS EUROPA 2 – 2/3

European coastlines in spring and summer: Nordic to Mediterranean

- Spring awakens along Europe's west coast, in the Norwegian fjords and in the culturally rich cities of the Baltic Sea (EUX2808 to EUX2812)
- A British midsummer's dream in June with the most beautiful parts of southern England (EUX2813)
- To discover: short cruise with Oslo and Copenhagen (EUX2814)
- Finally back in the programme: the EUROPA 2 sails to Svalbard (EUX2815)
- Summer fun in the eastern Mediterranean with a focus on Greece, Turkey and Croatia (EUX2817 to EUX2820) as well as two cruises with a focus on Italy and France (EUX2821, EUX2822)

OUR TIP:

DIVERSE NORWAY WITH A COURSE SET FOR SVALBARD

21 Jun – 10 Jul 2028, 19 days
Cruise EUX2815, MS EUROPA 2
from Kiel to Hamburg

via Bergen, Svartisen, Tromsø, Svalbard, Honningsvåg, Lofoten (Leknes), Rorvik, Trondheim, Geirangerfjord, Stavanger

- The far north in depth: midnight sun, deep fjords and shimmering worlds of ice
- Immense glaciers, deep fjords, and untouched wilderness on Svalbard



OUR TIP:

ANCIENT TREASURES AND THE AEGEAN LIFESTYLE

07 Aug – 19 Aug 2028, 12 days
Cruise EUX2818, MS EUROPA 2
from Istanbul to Piraeus (Athens)

via passage through the Dardanelles, Bozcaada, Kusadasi, Bodrum, Crete (Agios Nikolaos), Santorini, Naxos, Milos, Nauplia, Hydra

- Istanbul: the dazzling metropolis on the majestic Bosphorus
- Greek island dreams full of charm and colours



ROUTE HIGHLIGHTS MS EUROPA 2 – 3/3

Dream destinations for winter: Africa and the Orient

- Legendary national parks, impressive nature experiences and fine, sandy beaches from South Africa to the Seychelles (EUX2825, EUX2826)
- Back in the programme after a long time: destinations in the United Arab Emirates (EUX2827, EUX2828)
- 19-day Christmas cruise from the United Arab Emirates and Oman, via the Maldives and Sri Lanka to Southeast Asia (EUX2900)

OUR TIP:

FROM SOUTH AFRICA TO IDYLLIC ISLANDS

10 Nov – 26 Nov 2028, 16 days
Cruise EUX2826, MS EUROPA 2
from Cape Town to Mahe (Seychelles)

via Mossel Bay, Gqeberha, Durban,
Madagascar (Nosy Be, Nosy Iranja,
Antsiranana), Seychelles (La Digue,
Praslin)

- One cruise, three destinations: South Africa, Madagascar and the Seychelles
- Captivating wildlife sightings and relaxing hours on the beach



OUR TIP:

ORIENTAL MAGIC AND GLITTERING CITIES

09 Dec – 18 Dec 2028, 9 days
Cruise EUX2828, MS EUROPA 2
from Dubai to Dubai

via Abu Dhabi, Sir Bani Yas, Doha,
Mina Khalifa, Muscat, Ras al-Khaimah

- Far away from the Christmas rush – from skyscrapers to desert adventures
- Perfect mix of beliefs and a futuristic lifestyle



CRUISE COMBINATIONS MS EUROPA 2

A CRUISE OF CONTRASTS: NORTH AND CENTRAL AMERICA

23 Oct 2027 – 28 Apr 2028, 188 days
Cruise EUX272108, MS EUROPA 2
from Hamburg to Hamburg

Look forward to:

- Atlantic crossing from Hamburg
- American way of life along America's East Coast
- Festive days in the Caribbean
- Costa Rica's exotic nature
- Treasures of advanced civilisations in Mexico
- Atlantic islands, Morocco and Western Europe



TROPICAL SUN MEETS EUROPE'S COASTS

08 Feb – 28 Apr 2028, 80 days
Cruise EUX280308, MS EUROPA 2
from Miami to Hamburg

Look forward to:

- The charm of vibrant cities along the Gulf of Mexico
- Dream Caribbean islands – perfect for relaxing
- Atlantic islands and the world of the Arabian Nights in Morocco
- The temperament of Spain and Western Europe's cultural legacy



AFRICAN DIVERSITY AND THE MAGIC OF THE ORIENT

26 Oct – 18 Dec 2028, 53 days
Cruise EUX282528, MS EUROPA 2
from Cape Town to Dubai

Look forward to:

- Namibia's desert and on the trail of the big five in South Africa
- The untouched landscapes of Madagascar
- Relaxation on the fine, sandy beaches of the Seychelles
- Colours and scents of the Arabian Peninsula





HAPAG ¹⁸/₉₁ LLOYD
CRUISES

ROUTE HIGHLIGHTS
HANSEATIC nature

ROUTE HIGHLIGHTS HANSEATIC nature – 1/4

Adventure in the Indian Ocean and Africa: new programme in winter

- Premieres in January and February: Seychelles in depth on three different dates (NAT2801, NAT2803, NAT2805) and Madagascar in depth on two different dates (NAT2802, NAT2804)
- A vibrant mix: Namibia, St Helena and Cape Verde in one cruise (NAT2807)
- Wildlife observations up close and cosmopolitan flair (NAT2806, same route as NAT2724)

An active spring on the Atlantic islands

- Cape Verde, Canary Islands and Madeira (NAT2808)
- Expedition Azores (NAT2809)

OUR TIP:

3x EXPEDITION SEYCHELLES

03 Jan – 15 Jan 2028, cruise NAT2801
 30 Jan – 11 Feb 2028, cruise NAT2803
 26 Feb – 09 Mar 2028, cruise NAT2805
 12 days, HANSEATIC nature from Mauritius to Mahe (Seychelles) via Aldabra Islands (Assumption, Aldabra, Astove), St. Francois Atoll, Inner Islands (La Digue, Grande Soeur, Curieuse)

- Premiere route: only possible with a small expedition ship
- Atolls that are hard to find on the map with strict visitor limits



OUR TIP:

2x EXPEDITION MADAGASCAR

15 Jan – 30 Jan 2028, Cruise NAT2802
 11 Feb – 26 Feb 2028, Cruise NAT2804
 15 days, HANSEATIC nature from Mahe (Seychelles) to Mauritius via Seychelles (Praslin, Curieuse), Madagascar (Nosy Be, Nosy Mitsio, Nosy Anjombavola, Nosy Hara, Antsiranana, Nosy Mangabe, Nosy Boraha), Mayotte, Reunion

- Authentic insights into the simple life of Madagascar
- Zodiac rides to hidden coasts and active adventures in nature when snorkelling or hiking



ROUTE HIGHLIGHTS HANSEATIC nature – 2/4

New horizons in northern and Western Europe

- Warm spring days in the Mediterranean and premiere calls for the expedition fleet (NAT2810, NAT2811)
- The British Isles for insiders in June (NAT2812)
- To discover: short cruise North Sea in June (NAT2813) and short cruise London and Amsterdam in September (NAT2821)
- First time in the programme: Shetland Islands in depth (NAT2819)
- Autumnal symphony of colours in the Scandinavian Indian summer (NAT2822)
- New: Baltic Sea in October beyond the usual routes – with the Åland Islands (NAT2823) and the Kotka archipelago (NAT2824)

OUR TIP:

PORTUGAL, SPAIN AND FRANCE

09 May – 22 May 2028, 13 days

Cruise NAT2810, HANSEATIC nature from Lisbon to Mallorca

including via Portimao, Gibraltar, Almeria, Tarragona, Sete, Sanary-sur-Mer, Corsica (Calvi, Bonifacio), Menorca

- Beyond the usual routes – and heading for Corsica, the first time the expedition fleet will call here
- A perfect mix of culture and nature, relaxation and culinary indulgence



OUR TIP:

EXPEDITION NORWAY AND SHETLAND ISLANDS

23 Aug – 07 Sep 2028, 15 days

Cruise NAT2819, HANSEATIC nature from Tromsø to Bremerhaven

via Trollfjord, Lofoten (Svolvær), Svartisen glacier, Torghatten, Geirangerfjord, Maløy, Shetland Islands (Lerwick, Fair Isle, Papa Stour, Isle of Foula, Isle of Mousa), Egersund

- Shetland Islands in depth – for the first time with Papa Stour and the Isle of Foula
- Feel the thrill of expeditions: island explorations via Zodiac



ROUTE HIGHLIGHTS HANSEATIC nature – 3/4

Eastern Arctic: a summer full of adventure from June to August

- Norway's fjords, the legendary North Cape and the main highlight, Svalbard (NAT2814)
- The classic route on three different dates: Svalbard circumnavigation (NAT2815, NAT2816, NAT2817)
- The entire course around the Svalbard archipelago to the world's largest national park in north-east Greenland (NAT2818)

OUR TIP:

EXPEDITION NORWAY AND NORTHWEST SVALBARD

23 Jun – 08 Jul 2028, 15 days
Cruise NAT2814, HANSEATIC nature
from Hamburg to Longyearbyen

via Bergen, Geirangerfjord, Trollfjord, Stokmarknes, Andenes, Tromso, North Cape, north-west Svalbard (Hornsund, Prins Karls Forland, Ny-Alesund, Liefdefjord)

- Premiere destinations for the expedition fleet: Stokmarknes and Andenes in Norway
- Adventure in Svalbard's wilderness right up close the ice edge



OUR TIP:

EXPEDITION SVALBARD CIRCUMNAVIGATION AND NORTH-EAST GREENLAND

07 Aug – 23 Aug 2028, 16 days
Cruise NAT2818, HANSEATIC nature
from Longyearbyen to Tromso

via Svalbard (including Ny-Alesund, Liefdefjord, cruising through the Hinlopen Strait and Freeman Sound, Nordaustlandet, Hornsund), Greenland (Northeast Greenland National Park, Scoresbysund)

- Circumnavigation of Svalbard, only possible with an experienced crew
- Flexible course along seldom-visited coasts in north-east Greenland



ROUTE HIGHLIGHTS HANSEATIC nature – 4/4

Northern Europe in winter – a new programme for explorers

- Norway's fjords for true connoisseurs (NAT2825) or as an introduction to the wonders of the north (NAT2826)
- A glittering pre-Christmas season with Advent cruises in the North Sea (NAT2828) and the Baltic Sea (NAT2829)
- 2x Northern Lights adventures in Norway – for the first time over Christmas and New Year (NAT2827, NAT2900)

OUR TIP:

NORWAY'S FJORD WORLD WITH LOFOTEN AND VESTERALEN

27 Oct – 06 Nov 2028, 10 days
Cruise NAT2825, HANSEATIC nature
from Hamburg to Tromsø

via Bergen, Ålesund, Torghatten, Svartisen glacier, Lofoten (Leknes, Svolvær), Vesterålen (Trollfjord, Stokmarknes)

- Premiere cruise with destinations for true Norway connoisseurs
- Norway as wild and authentic as never before – beyond the usual routes



OUR TIP:

ADVENT CRUISE NORTH SEA

01 Dec – 11 Dec 2028, 10 days
Cruise NAT2828, HANSEATIC nature
from Hamburg to Kiel

via London, cruise on the Thames, Antwerp, Amsterdam, Oslo, Copenhagen

- Five cities in ten days, among them four European capitals
- Overnight stay: London bathed in a sea of lights with opulent festive decorations





HAPAG ¹⁸/₉₁ LLOYD
CRUISES



ROUTE HIGHLIGHTS

HANSEATIC Inspiration

ROUTE HIGHLIGHTS HANSEATIC inspiration – 1/4

Antarctica: a continent without people, but full of life

- Discover Antarctica in just 14 days – new route on three different dates (INS2801, INS2803, INS2821)
- Pure magic: crossing of the Antarctic Circle (INS2802, same route as SPI2801)
- Thick pack ice and mighty icebergs: Christmas cruise with lots of extra time in the Weddell Sea (INS2900, same route as SPI2900)

OUR TIP:

3x EXPEDITION ANTARCTICA: SOUTH GEORGIA AND ANTARCTIC PENINSULA

07 Jan – 21 Jan 2028, Cruise INS2801
11 Feb – 25 Feb 2028, Cruise INS2803
02 Dec – 16 Dec 2028, Cruise INS2821
14 days, HANSEATIC inspiration from Ushuaia to Ushuaia

via South Georgia, South Orkney Islands, South Shetland Islands, Weddell Sea and Antarctic Peninsula

- New in the programme: short cruise with 14 days
- With a focus on the wildlife paradise of South Georgia and the Antarctic Peninsula



OUR TIP:

EXPEDITION ANTARCTICA: ANTARCTIC CIRCLE INTENSIVE

21 Jan – 11 Feb 2028, 21 days
Cruise INS2802, HANSEATIC inspiration from Ushuaia to Ushuaia

via Falkland Islands, South Georgia, South Orkney Islands, South Shetland Islands, Antarctic Peninsula, crossing the Antarctic Circle, Marguerite Bay

- Set sail for adventure – where the Antarctic is even wilder, icier and whiter
- Same route as cruise SPI2801



ROUTE HIGHLIGHTS HANSEATIC inspiration – 2/4

South and Central America: mighty landscapes, vibrant traditions

- Experience Chile's southern and northern fjords in depth in February/March (INS2804) and November (INS2820)
- The technological miracle of the Panama Canal on two routes – in March (INS2805) and October/November (INS2819)
- Award-winning and unrivalled: Expedition Amazon in April/May (INS2806, INS2807)
- Set sail for the secrets of the Caribbean off the beaten track in May (INS2808)

OUR TIP:

2x EXPEDITION AMAZON

02 Apr – 20 Apr 2028, 18 days

Cruise INS2806, HANSEATIC inspiration from Belem to Iquitos

20 Apr – 08 May 2028, 18 days

Cruise INS2807, HANSEATIC inspiration from Iquitos to Belem

on the Lower and Upper Amazon with numerous expedition activities and Zodiac landings (via Manaus (Amazon) and Rio Negro)

- Only possible with a small ship: an expedition far beyond Manaus (Amazon)
- Numerous Zodiac rides into the labyrinth of tributaries



OUR TIP:

EXPEDITION CARIBBEAN ISLANDS

08 May – 23 May 2028, 15 days

Cruise INS2808, HANSEATIC inspiration from Belem to Halifax

via Ile Royale, Tobago, Bequia
St Lucia, Dominica, Saint-Barthelemy,
Anguilla, Bermuda

- Island gems on a new route – only possible with a small ship
- Admire natural wonders while hiking or walking and enjoy many water sports activities with the Zodiacs



ROUTE HIGHLIGHTS HANSEATIC inspiration – 3/4

Pioneering discoveries and natural wonders: Great Lakes and St Lawrence River

- Early summer with the St Lawrence River and four of the Great Lakes (INS2809)
- Where other cruise ships seldom go: Lake Superior in depth in June (INS2810)
- New in the programme: in June/July from the Great Lakes all the way to the Arctic (INS2811)
- Greenland in combination with the St Lawrence River in August (INS2814)
- All five Great Lakes on one cruise on two different dates in September with premiere destinations (INS2815, INS2816)
- In the programme for the first time since 2024: St Lawrence River, Nova Scotia and Maine in Indian summer (INS2817)

OUR TIP:

GREAT LAKES

11 Jun – 23 Jun 2028, 12 days
Cruise INS2810, HANSEATIC inspiration from Milwaukee to Milwaukee

via Lake Huron (Tobermory, Killarney, Parry Sound, Mackinac Island), Detroit River (Windsor), Lake Superior (Slate Island, Terrace Bay, Silver Islet), Sault Ste. Marie

- Wide shores and wild forests: adventures on three of the five Great Lakes
- Expedition days on Lake Superior with Zodiac landings



OUR TIP:

ST LAWRENCE RIVER, NOVA SCOTIA AND MAINE

26 Sep – 12 Oct 2028, 16 days
Cruise INS2817, HANSEATIC inspiration from Toronto to Boston

via daytime passage through seven locks in the St Lawrence River, Montreal, Quebec, Tadoussac, Havre-Saint-Pierre, Gaspé, Isles de la Madeleine, Prince Edward Island, Halifax, Bar Harbor

- A nautical masterpiece: seven locks in the St Lawrence River
- New: cruising on the Penobscot River



ROUTE HIGHLIGHTS HANSEATIC inspiration – 4/4

Arctic adventure on two routes in July and August

- A classic in the programme again: Northwest Greenland (INS2812)
- Strictly limited in 2028: only one cruise in the Canadian Arctic (INS2813)

OUR TIP:

EXPEDITION NORTHWEST GREENLAND

17 Jul – 29 Jul 2028, 12 days
Cruise INS2812, HANSEATIC inspiration from Kangerlussuaq to Kangerlussuaq via Eqip Sermia Glacier, Uummannaq, Storöen, Kangarsuatsiaq, Qaanaaq, Siorapaluk, Old Thule, Cape York, Qeqertarsuaq, Disko Bay, Sisimiut

- A wealth of contrasts with mighty glaciers, vast tundra and vibrant Inuit culture
- Excellent opportunities to observe polar bears, seals, whales and musk oxen



OUR TIP:

EXPEDITION CANADIAN ARCTIC AND NORTHWEST GREENLAND

29 Jul – 15 Aug 2028, 17 days
Cruise INS2813, HANSEATIC inspiration from Kangerlussuaq to Kangerlussuaq via Canada (Baffin Island, Devon Island, southern coast of Ellesmere Island, Pim Island, Nares Strait), Greenland (Qaanaaq, Etah, Cape York, Disko Bay, Sisimiut)

- Adventure between Canada and Greenland – only possible thanks to a ship with the highest ice class
- Coastlines only previously visited by legendary explorers: Zodiac rides into the unknown





HAPAG ¹⁸/₉₁ LLOYD
CRUISES

ROUTE HIGHLIGHTS

HANSEATIC spirit

ROUTE HIGHLIGHTS HANSEATIC spirit – 1/5

Made for pioneers: expeditions in the Antarctic

- Pure magic: crossing the Antarctic Circle (SPI2801, same route as INS2802)
- Only in the programme with Hapag-Lloyd Cruises: semi-circumnavigation of Antarctica (SPI2802)
- A complete experience of nature, wildlife and polar history: highlights of the Antarctic (SPI2818, SPI2819)
- Thick pack ice and mighty icebergs: Christmas cruise with lots of extra time in the Weddell Sea (SPI2900, same route as INS2900)

OUR TIP:

EXPEDITION SEMI-CIRCUMNAVIGATION ANTARCTICA

23 Jan – 24 Feb 2028, 31 days

Cruise SPI2802, HANSEATIC spirit from Ushuaia to Christchurch

via South Shetland Islands, Antarctic Peninsula, crossing the Antarctic Circle, Bellingshausen Sea, Amundsen Sea, Ross Sea, Ross Island, Terra Nova Bay, Victoria Land, New Zealand subantarctic islands, Stewart Island

- In the wake of historical explorers
- Possibility of observing emperor penguins



OUR TIP:

EXPEDITION ANTARCTICA: WEDDELL SEA (INTENSIVE, CHRISTMAS CRUISE)

14 Dec 2028 – 03 Jan 2029, 20 days

Cruise SPI2900, HANSEATIC spirit

via Falkland Islands, South Georgia, South Orkney Islands, South Shetland Islands, Weddell Sea (intensive), Antarctic Peninsula

- Christmas and New Year's Eve in untouched refuges
- Same route as cruise INS2900



ROUTE HIGHLIGHTS HANSEATIC spirit – 2/5

Fascination at the far end of the earth: New Zealand, Western Pacific and Australia

- New route now with circumnavigations of both the North and South Islands of New Zealand in February/March (SPI2803)
- Premiere in March/April: island-hopping to hidden Pacific pearls on the Solomon Islands, in Papua New Guinea and in Indonesia (SPI2804)
- First time in the programme: Expedition Kimberley in May, one of the world's most spectacular and remotest regions (SPI2807)

OUR TIP:

NEW ZEALAND

24 Feb – 14 Mar 2028, 19 days
Cruise SPI2803, HANSEATIC spirit
from Christchurch to Auckland
via Dunedin, Milford Sound,
New Plymouth, Kaiteriteri, Picton,
Kaikoura Bay, Wellington, Napier,
White Island, Great Barrier Island,
Whangarei, Norfolk Island, Bay of Islands

- Urban lifestyle alternating with spectacular scenery and wildlife
- A wide range of outdoor activities and encounters with Maori culture



OUR TIP:

EXPEDITION KIMBERLEY

04 May – 22 May 2028, 18 days
Cruise SPI2807, HANSEATIC spirit
from Darwin to Darwin
via Montgomery Reef, Broome, Exmouth,
Shark Bay, Houtman Abroholms, Montebello
Islands, Lacepede Islands, Careening Bay,
King George River

- Tidal wonders: Montgomery Reef with waterfalls and an abundance of fish
- King George Falls up close: adventures in the Zodiacs
- Spiritual and cultural legacy of Australia's Indigenous peoples



ROUTE HIGHLIGHTS HANSEATIC spirit – 3/5

A summer of in-depth experiences in Asia and Alaska

- New in the programme: Expedition Unknown Indonesia in April (SPI2805)
- New and seldom-visited combination: Indonesia and East Timor in April/May (SPI2806)
- An unusual premiere: the Molucca Islands, Raja Ampat and the Philippines in May/June (SPI2808)
- Japan along the seldom-visited west coast in June (SPI2809)
- Powerful pristine beauty in July: Hokkaido, Aleutian Islands and Alaska's Inside Passage for the first time all the way to Vancouver (SPI2810) and Alaska's Inside Passage (SPI2811)

OUR TIP:

EXPEDITION INDONESIA AND EAST TIMOR

19 Apr – 04 May 2028, 15 days

Cruise SPI2806, HANSEATIC spirit from Bali to Darwin

via Semarang, Gili Islands, Lesser Sunda Islands (Riung, Maumere, Larantuka, Pulau Alor, Pulau Wetar), West Timor (Kupang), East Timor (Dili, Pulau Atauro, Com)

- Natural wonders of the Lesser Sunda Islands: volcanoes, rainforests and hidden lagoons
- Cultural diversity in close proximity: Hinduism, Islam and Catholicism



OUR TIP:

EXPEDITION INDONESIA AND PHILIPPINES

22 May – 08 Jun 2028, 17 days

Cruise SPI2808, HANSEATIC spirit from Darwin to Keelung (Taipei)

via Molucca Islands (Kei Islands, Banda Islands), Raja Ampat (Pulau Misool, Waigeo, Pulau Arborek, Pulau Piaynemo), Visayas (Bucas Grande Island, Bohol), Manila, Basco, Hualien

- Untouched destinations that can only be reached by boat and Zodiac
- Insider tip: the incomparable underwater world of Raja Ampat



ROUTE HIGHLIGHTS HANSEATIC spirit – 4/5

Legendary Arctic routes in August and September

- A route that only a few ships can master – the Northwest Passage (SPI2812)
- A polar adventure of superlatives with spectacular West Greenland and seldom-visited East Greenland (SPI2813)

OUR TIP:

EXPEDITION NORTHWEST PASSAGE

30 Jul – 28 Aug 2028, 29 days

Cruise SPI2812, HANSEATIC spirit from Seward to Kangerlussuaq

via Alaska Peninsula, Aleutian Islands, adventure in the Northwest Passage (including Victoria Island, Jenny Lind Island, Peel Sound, Prince of Wales Island, Beechey Island, Devon Island), Greenland (Uummannaq, Disko Bay, Sisimiut)

- The route is the destination – often determined by weather and ice
- A combination of captivating history and impressions of nature



OUR TIP:

EXPEDITION WEST AND EAST GREENLAND

28 Aug – 12 Sep 2028, 15 days

Cruise SPI2813, HANSEATIC spirit from Kangerlussuaq to Reykjavik

via Sisimiut, Disko Bay, Arsukfjord, Prince Christian Sound, Skjoldungen Sound, Tasiilaq, Ittoqqortoormiit, Northeast Greenland National Park

- Marvel at nature from the deck and the Zodiacs: towering mountains, deep fjords and mighty ice
- With a bit of luck, see the Northern Lights



ROUTE HIGHLIGHTS HANSEATIC spirit – 5/5

Autumn adventure in Europe

- From the land of the elves to the Highlands in September (SPI2814)
- In the programme again: Expedition circumnavigation of Ireland in September/October (SPI2815)
- Extend your summer on the Atlantic islands in October (SPI2816)

OUR TIP:

EUROPE'S NORDIC ISLAND WORLDS

12 Sep – 24 Sep 2028, 12 days

Cruise SPI2814, HANSEATIC spirit
from Reykjavik to Dublin

via Heimaey, Djupivogur, Orkney Islands (Stromness, Westray), Hebrides (Isle of Lewis, Isle of Skye, Isle of Canna, Isle of Mull), Oban, Isle of Man

- Expedition feeling: Zodiac rides along wildly romantic coasts
- Seldom-visited destinations such as Peel on the Isle of Man and, for the first time, the Isle of Canna



OUR TIP:

MADEIRA, CANARY ISLANDS AND CAPE VERDE

06 Oct – 21 Oct 2028, 15 days

SPI2816, HANSEATIC spirit
from Leixoes (Porto) to Sal

via Lisbon, Madeira (Porto Santo, Ilha Deserta Grande, Funchal), Canary Islands (La Gomera, La Palma), Cape Verde (Sao Vicente, Santo Antao, Sao Nicolao, Fogo, Boa Vista)

- Funchal with overnight stay
- Cloud forests, volcanic craters and quiet trails on La Gomera and La Palma
- Rare island paradise: unspoilt Cape Verde





HAPAG ¹⁸/₉₁ LLOYD
CRUISES

UNFORGETTABLE WITH ALL THE SENSES

Cruises with our fleet are not merely cruises.
They are storytellers of the hidden chapters
of this world, written for dreamers,
adventurers and those seeking the
unforgettable.

